

# **SAFER COMMUNITIES BOARD**

**Wednesday, 24 February 2010**

**9.30am, Police HQ, New Conference Room**

## **A G E N D A**

### **OPEN SESSION**

Apologies

Presentation by Nottingham Prison Governor Karen Lloyd  
- Development of Notts Prison

- 1 Minutes of SCB meeting held on 18 November 2009 \*
- 2 Matters Arising:
  - a. Denise White (Derbyshire Probation Service) – NI 18 Adult Reoffending Presentation
  - b. Road Safety Partnership – Motorcycle Road Traffic Accidents 09\*
  - c. Government Hate Crime Action Plan/ ACPO Guidance \*
- 3 SCTAG Minutes of meeting held on 3 February 2010 \*
  - a. SCTAG – Terms of Reference \*
- 4 Performance Report \*
  - a. Performance Management Fund Bids\*
  - b. Capital Fund bids \*
- 5 Budget
  - a. ABG Summary 2010/2011 \*
  - b. Capital Allocation 2010/2011\*
- 6 Operation Relentless
  - a. 2009 Evaluation and 2010 Dates \*
- 7 Violence, Alcohol and Licensing update \*
- 8 DCC Safeguarding Update \*
- 9 Working together on Gypsy and Traveller Issues – Guidance\*

Date of next meeting:

2 June 2010, 9.30am New Conference Room, Police HQ

**MINUTES** of a meeting of the **DERBYSHIRE SAFER COMMUNITIES BOARD** held on 18 November 2009 at the Derbyshire Police Headquarters, Butterley Hall, Ripley

**PRESENT**

Mrs J Birkin

(Derbyshire Police Authority) – In the Chair

**Bolsover District Council**

Councillor B Murray-Carr  
W Lumley

**Derbyshire Fire and Rescue Service**

B Davis

**Chesterfield Borough Council**

M Evans  
Councillor D Stone

**Derbyshire Infrastructure Consortium/Amber Valley CVS**

L Allison

**Derbyshire Constabulary**

P Harper  
P Rouse  
B Thacker

**Derbyshire Probation Service**

D White

**Derbyshire County Council**

Councillor C Hart  
R Gent  
S Goodwin  
R Hill  
D Lowe

**Erewash Borough Council**

Councillor C Corbett  
J Jaroszek

**Derbyshire County PCT**

S Pintus

**High Peak Borough Council**

Councillor A Bingham  
M Forrester

**Derbyshire Dales District Council**

Councillor L Rose  
D Wheatcroft

**North East Derbyshire District Council**

A Towlerton

**South Derbyshire District Council**

Councillor H Wheeler  
S Batchelor

Also in attendance B Rowland, Audit Commission.

Apologies for absence were submitted on behalf of H Bowen (Chesterfield Borough Council), P Carney (Amber Valley Borough Council), M Creedon (Derbyshire Constabulary), Councillor P Makin (Derbyshire Fire Authority), F McArdle (South Derbyshire District Council), Councillor P Riggott (North East Derbyshire District Council), and B Tregunna (Derbyshire Fire and Rescue Service).

The Chair thanked P Harper for his contribution to the Board, as this was his last meeting, and wished him every success in his future role. P Rouse was welcomed to the meeting.

**56/09      PRESENTATION – DELIVERY PLAN FOR NATIONAL INDICATOR 7 – THIRD SECTOR** The Board received a presentation from R Gent (Derbyshire County Council) on the draft delivery plan for National Indicator 7 – Create an Environment for a Thriving Third Sector – which had been included in Derbyshire’s Local Area Agreement. The work of the third sector was being increasingly recognised and it was felt that there was a need for the statutory sector to support it.

The plan to deliver NI 7 had been developed in partnership with a number of agencies, and had been split into four areas – partnership arrangements, ability to influence decisions, funding relationships, and support available to frontline organisations. It was felt that improvements across these areas would encourage the sector to thrive. The issues which the plan aimed to address had been raised at a consultation event for frontline organisations, infrastructure agencies and public sector partners.

It was stated that work was currently ongoing to progress the plan, and it was felt important that the delivery of work was not in isolation. Discussions would take place on how to link up the work that was taking place. Feedback would be given to a future meeting of the Board on how the initial development had progressed.

**Action – R Gent, DCC**

**57/09      MINUTES OF SAFER COMMUNITIES BOARD MEETING 2 SEPTEMBER 2009 AND MATTERS ARISING RESOLVED** that the minutes of the meeting of the Board held on 2 September 2009 be confirmed as a correct record.

**58/09      MATTERS ARISING – OPERATION RELENTLESS (Min 42/09 refers)** The success of Operation Relentless was stated, and there had been a reduction in anti-social behaviour and criminal damage during the period.

**59/09      MATTERS ARISING – ALCOHOL HARM (Min 52/09 refers)** It was stated that the Derbyshire Partnership Forum Board had approved a timetable to target activity against partnership priorities, based on the Relentless model. Alcohol misuse was timetabled for the period up to the New Year. The activities currently being undertaken by partners were being gathered together. An update on VALs would be given at the next meeting.

**Action – S Goodwin**

**60/09**      **MATTERS ARISING - REDUCING CRIME AND ASB IN ENGLAND (Min 54/09 refers)** CDRP Chairs had been tasked to identify gaps against the checklist “Cutting Crime – Two Years On”. No information had been received and CDRP Chairs were asked to ensure that their Boards considered this which would be revisited at the next meeting.

**Action – CDRP Chairs**

**61/09**      **SAFER COMMUNITIES TASKING AND ADVISORY GROUP MINUTES RESOLVED** that the minutes of the Safer Communities Tasking and Advisory Group held on 21 October 2009 be received.

**62/09**      **ROAD SAFETY PARTNERSHIP DRAFT PLAN** The Board received a presentation from R Hill, Partnership Manager, on the Derby and Derbyshire Road Safety Partnership Annual Business Plan 2009/10. The Board noted the successful work of the Partnership but expressed concern about the rise in motorcycle accidents, particularly involving large bikes.

**RESOLVED** that the Road Safety Partnership be asked to consider the rise in motorcycle accidents and report back on its proposed actions to the next meeting.

**Action – R Hill**

**63/09**      **HOME OFFICE THEMATIC AND HALLMARKS ASSESSMENT**  
In 2007, the Home Office had published its guidance for ‘effective partnership working for Community Safety Partnerships’ which also introduced ‘Hallmarks of Effective Partnership’ working. The Hallmarks were intended to summarise the core elements of effective partnership working and provide a way for partnerships to check if they were delivering effectively or if there were areas where they should target improvements.

Safer Derbyshire had undertaken an assessment as set out in Appendix 1 to the report, using the Home Office assessment template for measuring against the Hallmarks, and the results suggested that the Safer Communities Board was delivering effectively and also identified evidence to support the findings.

David Wheatcroft referred to the recent murder in Cromford and paid tribute to partners, particularly the Police and highlighted this as effective partnership working on the ground.

**RESOLVED** that Safer Communities Board having considered the results of the completed Hallmarks assessment exercise endorses the SCTAG recommendations.

**64/09**      **PERFORMANCE REPORT** As agreed by the Derbyshire Partnership Forum (DPF) Executive in October, each of the Local Area

Agreement Thematic Boards were to consider how many of the LAA targets were likely to be green by 31 March 2010 by making an assessment in terms of what was acceptable by way of red status against an LAA target, what was red but could be influenced positively before March 2010 and identify whether or not plans were in place which the Board was confident would improve the status of any red targets.

Of the Safer Communities Boards eleven targets, four were currently at red status:-

**NI 18 - Adult offending rate for those on probation supervision -** Performance against the Indicator showed +7.94% which placed Derbyshire in 'Amber'. The Board was informed that a presentation would be made to the next meeting on NI 18 as there was national concern over the methodology for measuring the target. It was unlikely that an improvement would be seen in the next six months.

**NI 27 - Understanding concerns about crime and anti-social behaviour -** Operation Relentless, a joint police and partner initiative took place between 28 September and 8 November 2009. More than 100 partners were involved in over 2000 events, with the key aims of assessing analysis and identifying crime/ASB hot spots and confidence 'cold spots', developing a partnership communication and marketing strategy, develop a sense of care instead of signposting criminality within neighbourhoods, replacing vulnerable places with areas of community resilience and to demonstrate partnership activity success, thereby increasing confidence.

**NI 39 - Rate of alcohol related hospital admissions -** The figure of 1762 exceeded both the 2009-10 and 2010-11 targets. Further analysis to understand the high increase was being explored. Actions underway included training for frontline staff on brief interventions, needs assessment on underage drinking, safe drinking public campaign, B Safe project with young people, alcohol diversion scheme, and probation alcohol programme for offenders, and increased Trading Standards work.

**NI 47 - Rate of killed and seriously injured in road traffic accidents -** If the LAA target was to be achieved then the number of casualties in the remaining 4 months of the year shouldn't exceed 103. Motorcycle casualties had been higher than last year whilst young driver casualties had reduced. A range of initiatives by both the County Council and the Road Safety Partnership were planned to target young motorcyclists and young drivers towards the end of the year.

The Derbyshire Partnership Forum N 11 indicator was a shared target across all Boards and was currently at amber status:-

**NI 1 - % of people who believe people from different backgrounds get on well together in their local area** - Initial analysis of comparable data from other areas of the country suggested that Derbyshire was in the bottom quartile of county councils for this measure. To take work forward for the partnership a draft community cohesion strategy and action plan had been developed. Criteria for the allocation of a small pot of funding allocated as part of a successful RIEP application, was also being developed.

The Board was advised that NI 27 could achieve green status but NIs 18, 39 and 47 were likely to remain red as they were exceptionally challenging. This assessment of performance against LAA targets by March 2010 would be fed back to the next Derbyshire Partnership Forum Executive meeting on 29 January.

**RESOLVED** that the Board 1) notes performance and action against the LAA targets and agrees that a summary to be fed back to the DPF Executive meeting; and

2) receives a presentation on NI 18 at the next meeting.

**Action – S Goodwin – report performance against LAA targets to DPF Executive. D White – Presentation to next meeting.**

**65/09**      **PERFORMANCE MANAGEMENT FUND BIDS** Following allocations made at the last meeting in September 2009 the fund stood at £37,947. Four applications had been received, considered at the SCTAG meeting on 21 October 2009 and recommended for approval by the Board as set out below:-

Project	Funding	Comment
Chesterfield – Bluetooth Advice Network	£6,500	<b>Supported</b> Fitted with the Serious Acquisitive Crime problems, and was an extension of a current project.
Chesterfield – Response to increase in burglary and vehicle crime	£16,500	<b>Supported</b> Application covered various problems areas. This was a campaign over 8 weeks prior to Xmas, and included Smartwater and trap car initiatives.
High Peak - Knock Back Cards	£2,000	<b>Supported</b> This idea had already been used successfully in Staffordshire. Proposed that it would be a pilot with licensed premises in the Buxton area. Noted that the Logo needed to be the High Peak CSP logo rather than add individual agency logos. Part of a larger campaign around NI 20 over the Xmas period. Actions may also help with NI 39.

Bolsover – Extreme Wheels (Diversionary activities)	£3,400	<b>Supported</b> Noted that the DCC Youth Service would provide floodlighting facilities that would enable this project to run over the dark nights on Friday/Saturday evenings.
---	--------	--

Approval of the projects would leave the balance of the Performance Management Fund at £9,547.

**RESOLVED** that 1) the Board approves the following projects to be funded from the Performance Management Fund in line with the recommendations made by the SCTAG:-

Chesterfield – Bluetooth Advice Network £6,500  
 Chesterfield – Response to increase in burglary and vehicle Crime £16,500  
 High Peak – Knock Back Cards £2,000  
 Bolsover – Extreme Wheels £3,400

2) a full evaluation of the projects supported be submitted to a future meeting to assess impact.

**Action – S Goodwin/Chesterfield Borough/High Peak/Bolsover**

**66/09 CAPITAL FUND BIDS** Two applications had been made against the remaining £34,325 of the Area Based Grant capital funding allocation and were supported at the SCTAG meeting on 21 October 2009 as set out below:-

Project	Funding	Comment
North East Derbyshire – CCTV – Dronfield and Killamarsh	£8,949	<b>Supported</b> Provides integration of CCTV into a more effective system.
High Peak and Dales – Ozbox expansion in B Division	£7,000	<b>Supported</b> Ozbox had recently won a national award. The new vehicle would help in its expansion throughout B Division.

The balance of fund would stand at £18,376.

**RESOLVED** that 1) the Board recommends to the County Council the following schemes for inclusion in the 2009/10 capital programme:-

North East Derbyshire – CCTV, Dronfield and Killamarsh £8,949  
 High Peak and Dales – Ozbox expansion in B Division £7,000

2) a full evaluation of the projects supported be submitted to a future meeting to assess impact.

## **Action – S Goodwin/North East Derbyshire/High Peak/Derbyshire Dales**

**67/09**      **NATIONAL HATE CRIME PLAN** The Government had recently launched a new Cross-Government Action Plan on Hate Crime (HCAP) which aimed to tackle hate crime and inspire confidence in the criminal justice system amongst those groups and communities at risk of hate crime. It aimed to tackle crimes motivated by hostility based upon a person's disability, race, religion or belief, sexual orientation or whether they were transgender.

Both the police hate crime lead and DCC proposed to wait until the ACPO Hate Crime Manual had been refreshed and published in December 2009, before drafting a Hate Crime Plan for the County. This would allow the action plan and the manual to be utilised along with, the DCC Equality Impact Assessment, to help formalise a plan. In the meantime, DCC Community Safety Unit, together with partners, would continue to develop work with Stop Hate UK and other related projects.

**RESOLVED** that an update report be made to the next meeting.

## **Action – S Goodwin**

**68/09**      **UPDATE ON REDUCING RE-OFFENDING STRATEGY ACTION PLAN** The action plan had been fully reviewed and there were no significant areas for concern at this time. Some actions had been slightly delayed but these would receive attention over the next quarter. All eight district community safety partnerships and district/borough councils had identified local actions to support the strategy and action plan. A further updated action plan would be brought to the SCTAG and the Board in six months.

**RESOLVED** that the Board notes the progress against the action plan.

## **Action – S Goodwin**

**69/09**      **CSA ACTION PLAN UPDATE** The Board had signed off the county Community Safety Agreement three year strategy 2008-11 in June 2008 and approved a refreshed plan in May 2009. As agreed a six monthly action plan update had been undertaken and there were no significant areas of concern although one or two actions were subject to a delayed start as specified in the report.

Safer Derbyshire was participating in the joint police, city and county strategic intelligence assessment process which would culminate in a partnership event on 20 November 2009. Outcomes from the assessment would form the basis of a refresh to the Community Safety Agreement for 2010/11.

**RESOLVED** that the Board notes the report.



## Action – S Goodwin

**70/09**      **COHESION STRATEGY/MIGRANTS** The Board was informed of recent developments in respect of the Community Cohesion agenda across the county. A key measure was the extent to which people believed that their area was a place where people from different backgrounds got on well together – National Indicator 1. Derbyshire as a whole was currently not performing as well as other county council areas on this measure.

A County Community Cohesion group had been formed and had formulated a draft Community Cohesion Strategy as attached at Appendix A to the report which was now out for consultation until December. It was suggested that Board members may wish to liaise with their SCTAG representative to co-ordinate any response.

Derbyshire Constabulary had previously submitted a bid to the Migration Impact Fund for the creation of two migrant workers – outreach officer posts. The Constabulary received notification in July that it had been awarded £106,000 for year 1, and provisionally £100,000 for year 2, but year 2 funding was awaiting confirmation. It was anticipated the successful candidates would be in post for the start of 2010. The post holders would form part of the county wide Safer Derbyshire team and would report to Derbyshire Constabulary's Diversity Manager. The post holders would work closely with the county cohesion group to ensure best practice could be shared and embedded across the county.

**RESOLVED** that the Board notes 1) the draft Derbyshire Community Cohesion Strategy and submits any comments by liaising with their appropriate SCTAG representative to co-ordinate any response; and

2) the appointment of outreach workers to work within migrant communities.

## Action – Superintendent P Rouse

**71/09**      **ANTI-SOCIAL BEHAVIOUR SUPPORT** Two letters as attached to the report had been sent out to all CDRP Chairs, LCJB Chairs and Chief Constables outlining the Government's approach to anti-social behaviour moving forward.

Bolsover District had been identified as an area in need of support from the newly created Anti Social Behaviour (ASB) Squad, as identified by its Place Survey results. The ASB Squad had made initial contact with Bolsover via GOEM and plans were in place to outline the support required. An allocation of £5,000 for 2009/10 and a further £20,000 for 2010/11 would also be made

to Bolsover to facilitate taking forward any plan. A further report would be submitted to a future meeting.

**RESOLVED** that the Board notes the report and seeks a further update regarding support from the Anti Social Behaviour Squad.

**Action – S Goodwin**

**72/09**      **ASB PROTOCOL** In June 2005, Derbyshire Partnership Forum approved a county wide Anti-Social Behaviour Protocol which was subject to a review at the Community Safety Forum in June 2006. The Protocol had been reviewed and updated by the DCC Community Safety Unit and included consultation feedback from partners and the Anti-social Behaviour Forum. The final draft was approved by the SCTAG at its meeting on 21 October 2009 and was attached for the Board's consideration. The alterations were relatively minor and included:-

- Refresh to reflect current practice and procedures across the county
- Contacts updated in relation to relevant agencies, departments and job titles

**RESOLVED** that the Board approves the revised protocol and recommends a further review be undertaken in two year's time.

**Action – S Goodwin**

**73/09**      **PREVENT UPDATE** The Board were updated on the National Government CONTEST (Counter Terrorism) strategy revised in March 2009. The Prevent element of CONTEST required agencies to work to stop people becoming terrorists or supporting violent extremism. The Board had previously signed off a County Prevent Strategy and action plan.

One of the main aims of the Strategy was raise the awareness of staff to the threats posed by extremist groups whether that is from faith based terrorism and from far right groups by a series of briefings /conferences. In June 2009 Derbyshire County Council submitted a joint bid in conjunction with Chesterfield Borough Council whose priorities included "Strengthening mainstream voices, particularly women and young people" for funding from the Challenge and Innovation Fund through the Communities and Local Government Department. Both Authorities were successful and Chesterfield Borough Council received £20,400 including funds to develop local forums. Derbyshire County Council was awarded £30,000 to raise awareness and embed Prevent into mainstream services. A conference for managers was being held on 20 November and two further conferences for front line staff were scheduled for 12 and 30 March 2010.

**RESOLVED** to note the report for information.

## **Action – S Goodwin**

**74/09**        **DEVELOPMENTS WITH NOTTINGHAM PRISON** It was reported that Nottingham Prison was undergoing a major expansion which would see the population increase from 550 to 1060 prisoners and would be branded as a community prison. The expansion would mean that many more Derbyshire residents would be housed at Nottingham Prison. Encouraging discussions had taken place with the Governor who wished to attend the next meeting of the Safer Communities Board to discuss the developments.

**RESOLVED** to note the report.

## **Action – S Goodwin**

**75/09**        **EVALUATION OF POSTS FUNDED VIA ABG** It was stated that this issue had been raised at the Safer Communities Tasking and Advisory Group. An evaluation of funding would be undertaken to justify continuation beyond 2010/11.

## **Action – S Goodwin**

**76/09**        **PROBATION SERVICE** The Board was reminded that the Probation Service would become a Trust on 1 April 2010, and the launch for this was to take place on 23 March 2010. It was the intention to have two speakers at the launch – S Payne and M Johnson. Members would receive a letter of invitation shortly.

The Board was also informed that the Probation Service was currently recruiting for a Chair of the Trust Board. Information about this had been circulated.

**77/09**        **POLICE UNDER-FUNDING** The Board was informed that a lobby day would be held on 9 December relating to under-funding, and members were encouraged to support the lobby.

## SAFER COMMUNITIES BOARD

Title	<b>Motorcycle Road Traffic Casualties in 2009</b>
Report written by	Robert Hill – Manager of Derby & Derbyshire Road Safety Partnership
Recommendation	That the SCB support the Road Safety Partnership plans to achieve reductions in motorcycle related injuries.

### **Background**

Since 2007 Derby & Derbyshire Road Safety Partnership has prioritised motorcycle casualties. A Motorcycle Priority Action Group within the partnership structure has developed a multi agency and multi disciplinary approach to tackling this issue.

### **Overview**

Motorcyclists are over represented in Derbyshire's road casualties as they account for almost a third of all those killed or seriously injured but represent only around 3% of our road users. A variety of approaches have been adopted over the years in attempting to address the motorcycle problem. Some success has been achieved on targeted problem routes, but the overall impact in the partnership area has been limited with a rise in casualties in 2009. Motorcycle casualties stand out as a main priority and challenge being the largest priority category to rise significantly.

### **Analytical assessment**

This is a complex issue with a variety of components such as age with young riders (16 to 20 years of age) and older riders (41 to 55 years of age) being a significant proportion of casualties. Bike size is also a factor with those over 500cc accounting for over 60% of casualties in 2009.

Derbyshire Peak District rural main roads are challenging to motorcyclists and attract thousands of recreational bikers every year. Around 40% of all casualties on larger bikes are from outside the county, especially from Manchester, Sheffield and Nottingham.

The problems are particularly serious:

- at weekends in better weather (leisure riders with many residing outside Derbyshire)
- on main roads in rural areas (where speeds are higher)
- at bends ( where riders lose control)
- in urban areas throughout the year where other vehicles are involved

### **Casualties in the Partnership area (Derbyshire including Derby City)**

- In 2007, 186 motorcyclists were Killed and Serious Injured (KSI) accounting for a third of all our casualties
- In 2008, 128 motorcyclists KSI accounting for a quarter of all our casualties (down 58 or 31%)
- In 2009, increase in casualties back towards 2007 levels with 164 KSI at November – the calendar years full data is due in March.

### **Key motorcycle casualty reduction work in 2008 and 2009**

- An integrated routes campaign developed which led to a fewer casualties on key routes
- An urban biker campaign developed to combat casualties arising with smaller powered two wheelers and younger riders
- The only “Green Flag” awarded by the Audit Commission under the Comprehensive Area Assessment 2009 was for partnership work in reducing motorcycle casualties.
- Several awards have been won for publicity relating to the motorcycle campaign
- Department for Transport (DfT) grant funding was awarded for the ‘integrated motorcycle casualty reduction project’ 2009 to 2011.

### **Information**

The partnership’s Motorcycle Priority Action Group has developed a comprehensive action plan to tackle the problem:

1. Easter publicity campaign – a variety of methods used to publicise the issues in Derbyshire and the partnerships activities in the forthcoming biking season.
2. Matlock Bath engagement events – The first Sunday in each month April to September in the mining museum car park a mobile police station will form the focal point of engagement events with motorcyclists where the partnership’s work will be showcased and motorcyclists will be consulted with. Training will be heavily promoted.
3. Bikers’ Guide to Derbyshire 2010 will feature generic safety advice and the thirteen highest motorcycle casualty routes. Around 20,000 will be distributed to motorcyclists via events and through motorcycle dealerships.
4. Routes focus – thirteen of the highest casualty routes will receive particular attention in terms of engineering and data, education and training and enforcement and engagement
  - Engineering and data – safety barriers and manhole covers specific to motorcycle safety will be fitted to key locations. Data survey equipment will be monitored to provide flows, speeds, etc to ensure resources are targeted effectively. Temporary road side posters will be put up on the routes with targeted messages –

75% of the number deployed in 2009 with different messages following feedback from bikers and the public.

- Education and training – the Bikers' Guide provides specific information about the routes and hazards. It also includes a training application form.
  - Enforcement and engagement – Operation Focus has been well resourced through utilising the safety camera team and supporting roads policing to cover the problem routes at times when motorcycle casualties and usage are higher. Innovative enforcement techniques have been utilised with improved data enhancing targeted deployment.
5. Subsidised training courses have been developed and uptake is high.
- CBT Plus for inexperienced riders was launched in October 2009 and has already trained almost one hundred riders.
  - Bike Plus training for more experienced riders has doubled its uptake to almost two hundred a year.

### **Funding**

The Partnership has a budget within the Area Based Grant to support this work in 2010/11. The total cost for the above activities in non recurrent revenue and capital is approximately £250,000 which includes £100,000 match funding from DfT.

### **Recommendation**

**That the SCB support the Road Safety Partnership plans to achieve reductions in motorcycle related injuries.**

**DERBYSHIRE SAFER COMMUNITIES BOARD**

Title	National Hate Crime Plan (NCAP)
Report written by	Sally Goodwin – DCC CS Manager
Recommendation	That the SCB notes the report.

**Purpose of the report**

To provide the SCB with an update on the National Hate Crime Plan and the ACPO Hate Crime Manual.

**Information**

In October 2009, the Government launched the Cross-Government Action Plan on Hate Crime (HCAP) which aims to tackle hate crime and inspire confidence in the criminal justice system. ACPO is currently in the process of refreshing the ACPO Hate Crime Manual this is scheduled to be published by March 2010.

It was agreed by SCTAG that Safer Derbyshire would review both documents and assess the need for a County Hate Crime Plan. It is proposed to provide the next SCTAG / SCB with an update but this is dependent on the availability of the refreshed ACPO Manual.

**Recommendation**

**That the SCB notes the report**

**Safer Communities Tasking and Advisory Group**

**3 February 2010  
 New Conference Room, Constabulary HQ, Ripley**

Supt Paul Rouse (Chair)	Derbyshire Constabulary
Sally Goodwin	Derbyshire County Council – Community Safety Unit
Simon Gladwin	Amber Valley Borough Council
John Ritchie	Bolsover District Council
Steve Capes	Derbyshire Dales District Council
Philip Wright	Erewash Borough Council
Mark Forrester	High Peak Borough Council
Andrew Towleron	North East Derbyshire District Council
Chris Smith on behalf of Stuart Batchelor	South Derbyshire District Council
Christine Flinton	Derbyshire County Council – Community Safety Unit
Michelle Collins	Derbyshire County Council – Community Safety Unit
Ian Bates	Safer Derbyshire R&I Team
Robert Taylour	Derbyshire County Council – Trading Standards
Gerald Beales	Derbyshire County PCT
Diane Steiner	Derbyshire Drug and Alcohol Action Team
John Amos	Derbyshire Fire and Rescue Service
Judy Timmons	Derbyshire Fire and Rescue Service
Sean Wells	Derbyshire Fire and Rescue Service
Sarah Greensmith	Derbyshire Police Authority
Matt Pickard	Derbyshire County Council
Glenn Mason	Derbyshire Probation Service
Paul Walton	Derbyshire County Council – Legal section
Julie Crooks	Derbyshire Fire and Rescue Service (observer)
APOLOGIES:	
Insp. Barry Thacker	Derbyshire Constabulary
Joe Tomlinson	Chesterfield Borough Council
Robert Hill	Derby and Derbyshire Road Safety Partnership
Rosemary Plang	Derbyshire Probation Service
Rosemary Watson	Local Criminal Justice Board

**01/2010 MAPPA Presentation**

Brian Nuttall, MAPPA Co-ordination Manager gave a presentation on MAPPA (Multi Agency Public Protection Arrangements). The presentation was included in the papers for the meeting.

BN asked that MAPPA needs were reflected within CSP strategies and said that at a future date this should be linked into services around sexual violence. SG recommended best path forward would be via the county-wide Serious Sexual Violence Group.



**02/2010 Minutes of 21 October 2009 SCTAG meeting**

The minutes of the meeting were approved as a correct record.

**03/2010 Matters Arising**

- 49/2009 : Guidance has been delayed. Item deferred to May 2010 meeting. Summary of information to go to SCB.
- 55/2009 : 2 x Prevent Conferences in March 2010. GOEM attended the first conference and are now using Derbyshire as a point of good practice.
- 56/2009 : Peter Wright, Nottingham Prison Governor will attend February SCB to give a presentation.  
The prison is setting up an Offender Management Group. The first operational heads meeting has been held. Linkage with district housing departments is essential. SG lead on project board. GM operational lead.
- 57/2009 : SG will bring a template to the next SCTAG meeting for evaluation of posts funded via ABG. Specific case study evidence should be attached rather than included in the evaluation table.

**04/2010 Minutes and Actions of 18 November 2009 SCB meeting**

Actions were discussed.

- 49/2009 : JE to send out reminders regarding the evaluation of the projects funded from the PMF and Capital funds in 2009/10.
- 60/2009 : JE to send out "Cutting Crime" document.

**05/2010 REIP Bid – VAL Enforcement Vehicles**

Sean Wells gave a briefing on the accepted REIP funding bid for 7 x VAL vehicles. Police had accepted that the vehicles would be part of their fleet and would therefore pick up fuel and insurance costs.

Noted that there were no maintenance figures included in the bid and it would therefore require amendment and re-acceptance by REIP.

Following discussion it was decided that further work was needed in order to provide the best possible vehicles and to include maintenance costs for an appropriate number of years.

Existing vehicle type requires £5,600 per vehicle per year. 6-seater vehicle type would require £7,000 per vehicle per year. These additional costs would reduce the number of vehicles available.

It was agreed:

- JA/SW/JC and CF to meet and discuss options. Report as early as possible on the outcome of the meeting and SW to amend REIP Bid once agreement has been reached.
- Districts to contact SW to give their preferred option and provide information on whether or not they would be able to provide any form of funding to cover maintenance costs.
- VALs would direct the usage of the vehicles.

If possible agreement should be reached in advance of the next SCTAG meeting and agreed with PR/SG prior to amending the Bid. This would enable vehicles to be made available as early as possible.

**Action:**

- 1 District representatives to contact SW.**
- 2 JA/SW/JC and CF to meet and finalise option then discuss with PR/SG.**
- 3 SW to amend bid and resend to REIP.**

**06/2010 Inter Agency Guidance – Working Together on Gypsy and Traveller Issues**

Paul Walton indicated that the “Inter Agency Guidance – Working Together on Gypsy and Traveller Issues” document was due for review. It was brought to the meeting to confirm that authorities were aware of their responsibilities regarding the need to accommodate gypsies and travellers within the County.

In 2008 all authorities had carried out a survey and the outcome for Derbyshire was a requirement for 56 pitches within the county. This was a matter for district planning departments. PWA had mapped illegal encampments for a period of 5 years.

PW commented that we needed to look at the larger picture and confirm the scale of the problem, it was not simply a matter of more police enforcement.

Discussion continued around the reason why this had been brought to the SCTAG. It was considered that increases in ASB and impact on cohesion were the links. More information and analysis would be required before Districts/CSPs could act.

Concern was expressed re duplication of work already being undertaken by the Gypsy and Traveller Group.

It was considered that at the moment this was not an issue for this group as a whole, although there was a need for more Fire Service input to the document. Contact point in the Fire Service is Julie Crooks ([Julie.crooks@derbys-fire.gov.uk](mailto:Julie.crooks@derbys-fire.gov.uk) or tel: 01629 538410).

**Action: JC/PW to discuss additional information for document.**

**07/2010 Performance Report**

The Chair asked that all partners came to future meetings with updates when any of the NIs showed as Red in the performance report.

IB asked for comments in advance of future meetings if there were any queries on the Performance Report so that he could look at the appropriate data and bring the information on the day.

*NI 16 : Serious Acquisitive Crime*

Chesterfield is the only area in Red. It was noted that a Serious Acquisitive Crime Group had been set up. Suggested that pointers could be taken from Amber Valley, Erewash and Bolsover areas to see what had been done to reduce SAC in these areas.

*NI 20 : Assault with Less Serious Injury*

South Derbyshire had requested analysis on restorative justice. The last quarter had shown a decline following a major increase in activity over the summer. CS thought that a corner may have been turned.

IB identified that following police analysis in Swadlincote town centre there was a 50/50 split between ASB (young people) and domestic violence. A Section 30 Order is currently in place in the town centre. Incidents are still taking place and a number of issues around Linden House residents have been noted. Possible County support will be required.

High Peak had seen no impact from actions taken. It was thought that domestic violence was increasing, but more analysis would be needed to confirm this. IB suggested that similar issues to South were to be found in High Peak, but further analysis would be required to confirm this.

PW spoke about seasonal profiling and the need to adjust targets to allow for known "high risk" periods.

GM considered that the World Cup in June/July would be one of these times and asked what responsibilities licensees have.

RT responded that this should be on the agenda for the next round of VAL meetings – and would include such matters as door staff, boundary security etc.

NI 27 : Understanding of local concerns about ASB and crime by the local council and police.

NI 1 : Percentage of people who believe people from different backgrounds get on well together in their local areas

These are measured through the Place Survey. SG asked that a RAG breakdown be provided for these Indicators to future meetings within the performance report.

JA asked that, if possible, the same be provided for NI 33 : Arson Incidents, but recognised this is not an LAA target.

The next Place Survey would go out in Autumn 2010, but it was considered that volume information needs to be provided in advance of this, and there should be a constant "drip" of information. Question asked whether this should go to the ASB Forum for discussion. BT to take forward.

SC commented on an inaccuracy in paragraph 4 of the Key Findings of the Place Survey. This should read:

"Derbyshire Dales is within the top 30 districts nationally (*ie 30 best performing*) for all national indicator measures, with the exception of NI 42 (percentage thinking drug use/dealing is a problem), which still remains within the top 60."

*NI 39 : Alcohol-harm related hospital admission rates*

DS asked that Districts take this Indicator into account in the strategic planning and acknowledged the plethora of activity already taking place as per the alcohol update – Jan 2010.

#### **Actions:**

- 1 All partners come to future meetings with updates when any of the NIs show as Red in the performance report.**
- 2 All partners to comment in advance of future meetings to IB if there are any queries on the Performance Report.**
- 3 SG to speak to Jean Maddox re support for CS around Linden House.**

- 4 **IB to provide RAG breakdown for NI 27, NI 1 for future reports.**
- 5 **IB to discuss NI 33 with JA.**
- 6 **BT to take request re Place Survey information to the ASB Forum.**
- 7 **Districts to take account of NI 39 in their strategic planning.**

#### **08/2010 DCC Safeguarding Update**

AH briefed the meeting on the current situation of Safeguarding within the County. At the next Chief Executive's Meeting the Chesterfield CE would request CE representation on the Safeguarding Vulnerable Adults Partnership.

Three issues to highlight currently:

- Government funding for the 08000 Helpline extension would cease in March 2010. Evaluation of the project needed.
- REIP funding for MARAC Information Sharing has been granted and a single IT solution was being developed.
- Adult Care have invested in a new post of Service Manager – Domestic Abuse to sit within Safer Derbyshire – closing date is 7 February.

#### **09/2010 Capital / Revenue Funding Bids**

The following projects were recommended for approval by the SCB.

*Performance Management Fund:*

North East Derbyshire – Burglary and Car Crime - £3,505.

*Capital Fund:*

South Derbyshire – Town Centre CCTV II - £9,000

(slightly amended following the SCTAG meeting)

South Derbyshire – Alert Box, Melbourne - £3,200

(slightly amended following the SCTAG meeting)

Derbyshire Dales – CCTV Camera, Wood Street, Wirksworth - £8,000

Chesterfield – Langer Field Community Group Play Project - £10,271

Project returned to Chesterfield for further information. Acceptable to pass through once information provided and amended project received. May be necessary to use some revenue funding as well as capital in this project.

**Action: SG to report recommendations to SCB.**

#### **10/2010 Review of Terms of Reference**

Revised Terms of Reference were accepted with the following amendments:

Tasks:

7. To make recommendations on local structures and operational delivery with a view to improved outcomes, *having regard to strategic and local needs.*
8. To advise the Board with regard to tasking partners and appropriate groups, *having regard to strategic and local needs.*

Roles and Responsibilities of Individual Members:

- Representation at the meetings should be from senior managers. Deputy arrangements can be made, but attendees must be fully briefed and able to

make decisions on behalf of their organisations. *CSO's should only attend in exceptional circumstances.*

**Actions:**

- 1. JE to amend Terms of Reference as above.**
- 2. SG to report revised ToR to next SCB meeting.**
- 3. PR to request clarification of Chesterfield representative.**

**11/2010 VAL Update**

CF briefed the meeting on the report. Highlighting the following areas:

- Lack of reporting to SCTAG and SCB as governance bodies.
- Need to address collection of information relating to problem premises.
- Inconsistency around collection of information needs addressing – in particular “de-listing” information.
- Training issues highlighted for partners attending VAL meetings.
- PCT representation – this has reduced over the last 2 years. Need to be proactive in linking with PCTs. They could assist in wider issues eg alcohol harm/education. Steve Pintus is contact.
- Enforcement action – effective in some areas. Conflict of interest raised in some areas.
- Governance arrangements – a county-wide representative needs to attend all meetings to co-ordinate and disseminate information, and provide 6-monthly reports to SCTAG and SCB. This would probably be either CF or Inspector Andy Smith.
- Admin support resource needs to be picked up in each area as appropriate.

Report recommendations were supported by the SCTAG.

**Action: SG to recommend acceptance to the SCB.**

**12/2010 ASB – Bolsover Update**

32% of people had thought there was a problem with ASB in Bolsover area. GOEM has sent in a team and made various suggestions, including local meetings focused down to an area of around 2 streets. This type of meeting was regularly very well attended. Bolsover had produced an improvement plan (copy attached) and been awarded £27,000 to the CS Partnership and £40k to the District.

**Action: JR to provide update to next SCTAG meeting**

**13/2010 Road Safety**

MP had been working with partners to improve casualty reduction in Derbyshire. He was able to offer resources and assistance to partnerships providing information to groups/school children etc on road safety and casualty reduction issues.

He had links already with the SDR&I team and would like a SPOC in the Districts that he could link with to identify the biggest problem areas within Districts so he could work to addressing the issues. Recommended that the CSO and/or Partnership Sergeant would be the most likely contact point at present.

**Action: JE to send MP copy of contacts for all CSPs**

**14/2010      Operation Relentless**

Noted that the final report would be available shortly and PR would ensure copies were available.

**15/2010      Budget**

Area Based Grant – Revenue:

1.5% increase had been added to the Area Based Grant funding and this was reflected in the £892,665 allocation provided by the County Council. The same increase had been made to partner contributions. This was accepted by all partners at the meeting.

The £299,413 balance was allocated as previously giving £200,000 between the 8 Districts for Local Partnership Plans and £99,413 for the Performance Management fund for 2010/11.

**Action:      SG to recommend acceptance of the expenditure to the SCB.**

Area Based Grant – Capital:

It was noted that the Safer and Stronger Communities Capital Fund allocation for 2010/11 had been reduced by 50% to £129,000. It was recommended that discussion on disbursement should be deferred until the Operation Relentless evaluation had been published.

**Action:      SG to recommend deferment of decision on the use of this money till the May 2010 SCB meeting.**

PSA 2 Reward:

All confirmed receipt of 2<sup>nd</sup> instalment. SG confirmed a report to be sent to Derbyshire County Council Cabinet meeting requesting approval of the following for 2010/11 expenditure from the DCC PSA 2 Reward fund:

- Continued secondment of Senior Probation Officer to Community Safety Unit
- Purchase of Smoke Alarms for Fire and Rescue Service
- Part funding for the DAAT Conference in May 2010. £3,500 PR asked to confirm match funding for this as agreed with Phil Harper.

**16/2010      Any Other Business**

RT noted that underage sales checks had been carried out and results were moving in the right direction.

Analysis of the “Every Child Matters” survey is attached to the minutes for information.

## DERBYSHIRE SAFER COMMUNITIES BOARD

Title	<b>SCTAG Terms of Reference</b>
Report written by	Superintendent Paul Rouse
Attached	Revised SCTAG Terms of Reference
Recommendation	That the SCB support the recommendation of the SCTAG to agree the revised Terms of Reference.

### **Purpose of the report**

To outline the amendments to the SCTAG Terms of Reference and to seek approval for their agreement.

### **Background**

The Terms of Reference for the SCTAG were last updated in 2006, and as such they do not take account of a number of significant changes which have impacted on the work of the group.

### **Information**

The revised document now makes reference to:

- The role of the SCTAG in the delivery of the LAA targets, through the development, implementation and performance managements of the County Community Safety Agreement.
- The role of the SCTAG in agreeing priorities and making recommendations to the SCB in relation to expenditure of Area Based Grant.
- The Roles and Responsibilities of individual members of the group.

In addition:

- Membership of the group has been refreshed to reflect those currently represented.
- Clarity is provided on the Chair, Vice Chair and administrative support for the Group.

### **Recommendation**

That the SCB supports the recommendation of the SCTAG to agree the revised Terms of Reference.

## **Derbyshire Safer Communities Tasking and Advisory Group (SCTAG) Terms of Reference**

### Main Purpose

To act as a tasking and advisory group to the Derbyshire Safer Communities Board (SCB)

### Tasks

- 1 To consider the annual strategic intelligence assessment and oversee the development and implementation of the County Community Safety Agreement, ensuring full reference is made to LAA Targets.
- 2 To monitor progress against delivery of the LAA Targets, contained within the County Community Safety Agreement and provide exception reports, including identification of barriers to performance, and make recommendations to the SCB.
- 3 To manage the Area Based Grant, and make recommendations to the SCB on priorities for expenditure.
- 4 To advise the SCB on matters of target setting and policy (eg. Funding, priorities, consultation)
- 5 To commission and performance manage work on behalf of the Board.
- 6 To take account of national developments, considering their impact for Derbyshire, and make recommendations to the SCB as appropriate.
- 7 To make recommendations on local structures and operational delivery with a view to improved outcomes having regard to strategic and local needs.
- 8 To advise the SCB with regard to tasking partners and appropriate groups, having regard to strategic and local needs.

### Meetings

- Meetings will be held 3 weeks in advance of a SCB meeting, and where possible draft SCB papers will be presented and discussed.
- The SCTAG will work in an intelligence led/problem solving model.
- Project Groups may be formed to deliver specific actions on behalf of the SCTAG



## Membership

- Statutory CS Partners:
  - Police
  - Police Authority
  - Local Authorities
  - PCT
  - Fire and Rescue Service
  - Probation Service (Statutory partner from April 2010)
- LCJB
- DAAT
- Derby and Derbyshire Road Safety Partnership

Meetings will be chaired by Derbyshire Police, Head of Community Safety  
The Vice Chair will be DCC Head of Community Safety

## Roles and Responsibilities of Individual Members

The individual partner organisation roles and responsibilities in relation to the SCTAG are as follows:

- Representation at the meetings should be from senior managers. Deputy arrangements can be made but attendees must be fully briefed and able to make decisions on behalf of their organisations. CSOs should only attend in exceptional circumstances.
- To reflect the views of the organisation/sector that they represent in meetings and workshops, being sufficient briefed and able to make decisions about future policy developments / service delivery.
- To ensure that there are communication mechanisms in place within the organisation/sector that they represent to enable information about the priorities and decisions of the SCTAG to be disseminated.
- To consult about the work of the SCTAG where appropriate.
- To act on what the SCTAG has agreed.

## Officer Support

- To be provided by DCC CSU, Derbyshire Police Liaison Inspector and Safer Derbyshire Research and Information Team.
- Meetings to be administered by the DCC CSU.

## DERBYSHIRE SAFER COMMUNITIES BOARD

Title	<b>Performance Reporting</b>
Report written by	Superintendent Paul Rouse
Attached	Appendix A – 3rd Quarter Performance Report
Action/ Recommendations	<b>That SCB notes performance against the LAA targets and the actions agreed for future SCTAG meetings.</b>

### **Purpose of the report**

To update the Safer Communities Board (SCB) regarding the performance against the LAA targets and to outline the actions agreed at the SCTAG meeting.

### **Information**

The SCB is responsible for nine LAA targets based on the national indicator set and two local targets. Currently four of the targets are at red status and one at amber, details of which can be found in the attached report.

### **Red**

- NI 18 – Adult re-offending rates for those under probation supervision
- NI 27 – Understanding concerns about crime and anti-social behaviour
- NI 39 – Rate of alcohol related hospital admissions
- NI 47 – Rate of killed and seriously injured in road traffic accidents

Denise White is presenting an overview of the NI 18 indicator as a separate item to the Board and an updated information item has been provided to the Board by Robert Hill in relation to NI 47. In addition, a request has been made of the DAAT to look at a break down of the NI 39 indicator in conjunction with Public Health colleagues.

### **Amber**

NI 1 - % of people who believe people from different backgrounds get on well together in their local area.

At the last SCTAG meeting it was agreed that:

1. Partners would come to future meetings with updates where any of NIs show Red in the performance report.
2. Partners would raise queries on the performance report in advance of the meeting with SDRI.
3. SDRI would provide a RAG breakdown by district for NI 27, NI 1 for all future reports.
4. Place survey information to be discussed at the ASB Forum.
5. Districts to take account of NI 39 in their strategic planning.

### **Recommendation**

**That SCB notes performance against the LAA targets and the actions agreed for future SCTAG meetings.**

## DERBYSHIRE SAFER COMMUNITIES BOARD

Title	Third Quarter Performance Report 2009/10
Report written by	Compiled through CorVu by the SDRI Team
Action	For information of the SCB

### County Overview

NI	Description	Status
NI 1	% of people who believe people from different backgrounds get on well together in their local area	A
NI 16	Serious acquisitive crime rate	G
NI 18	Adult re-offending rates for those under probation supervision	R
NI 20	Assault with injury crime rate	G
NI 27	Understanding of local concerns about anti-social behaviour and crime issues by the local council and police	R
NI 32	Repeat incidents of domestic violence	G
NI 39	Rate of Hospital Admissions per 100,000 for Alcohol Related Harm	R
NI 47	People killed or seriously injured in road traffic accidents	R
NI 49	Total number of primary fires per 100,000 population	G
LI 1	Number of first-time entrants to the youth justice system at court entry level	G
LI 2	All drug users in effective treatment	G

### Definitions

Green (G) - On target

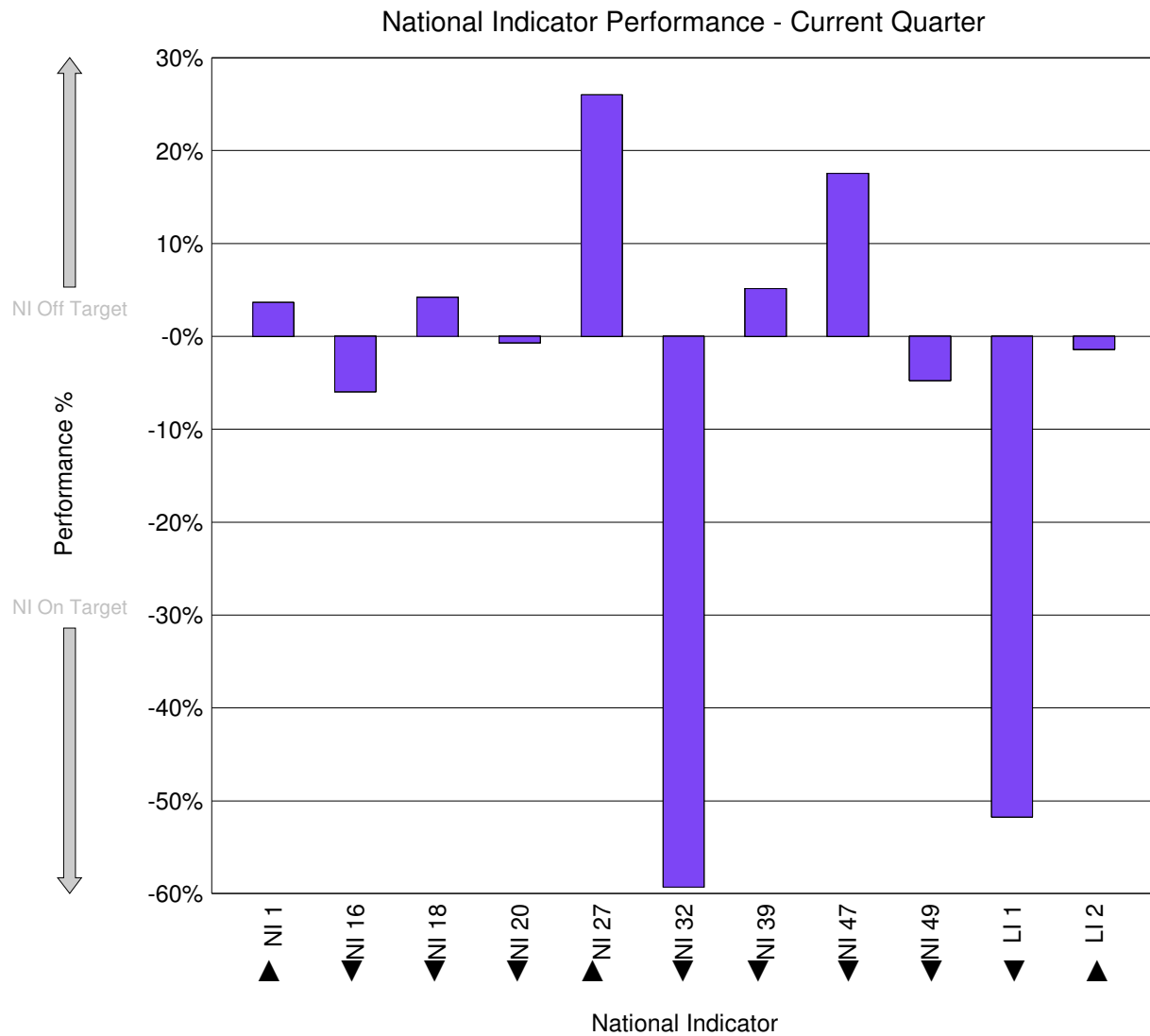
Amber (A) - Off target by up to 5%

Red (R) - Off target by greater than 5%

Grey (NA) - Figures are not available through the CorVu reporting system

### County Target Status Numerical Breakdown

NI	Actual	Target	Difference From Target	Performance
NI 1	74.10	76.80	2.70	4%
NI 16	10.72	11.40	-0.68	-6%
NI 18	4.19	-3.09	7.28	4%
NI 20	7.10	7.15	-0.05	-1%
NI 27	20.00	25.20	5.20	26%
NI 32	10.99	27.00	-16.01	-59%
NI 39	1754.00	1668.00	86.00	5%
NI 47	348.00	296.00	52.00	18%
NI 49	130.63	137.10	-6.47	-5%
LI 1	69.00	143.00	-74.00	-52%
LI 2	1967.00	1940.00	-27.00	-1%



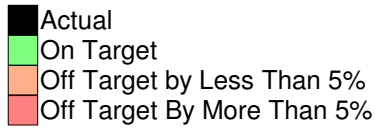
- ▲ This is a target which requires a quantitative increase
- ▼ This is a target which requires a quantitative decrease

### County Target Status Quarterly Comparison

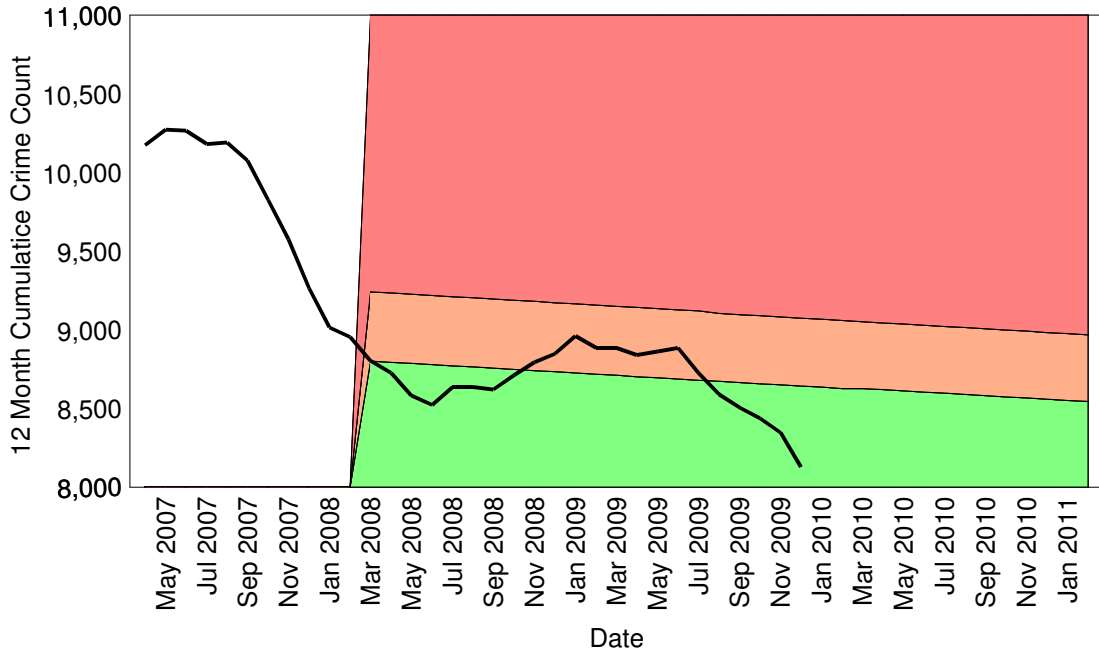
Target	Three Quarters Previous	Two Quarters Previous	Previous Quarter	Current Quarter
NI 1	A	A	A	A
NI 16	A	A	G	G
NI 18	R	R	R	R
NI 20	G	G	G	G
NI 27	R	R	R	R
NI 32	G	G	G	G
NI 39	A	A	R	R
NI 47	G	G	R	R
NI 49	G	G	G	G
LI 1	G	G	G	G
LI 2	A	A	G	G

## County Performance Over The LAA Period 2008-2011

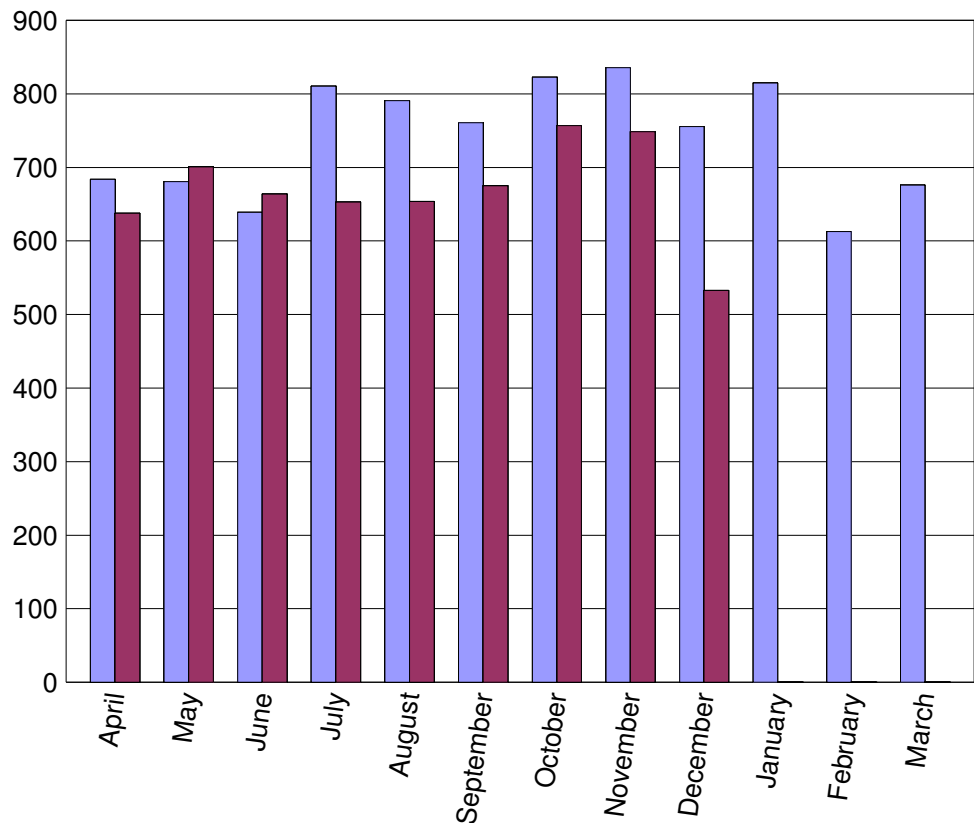
### NI 16 - Serious Acquisitive Crime



NI 16 Serious Acquisitive Crime Performance



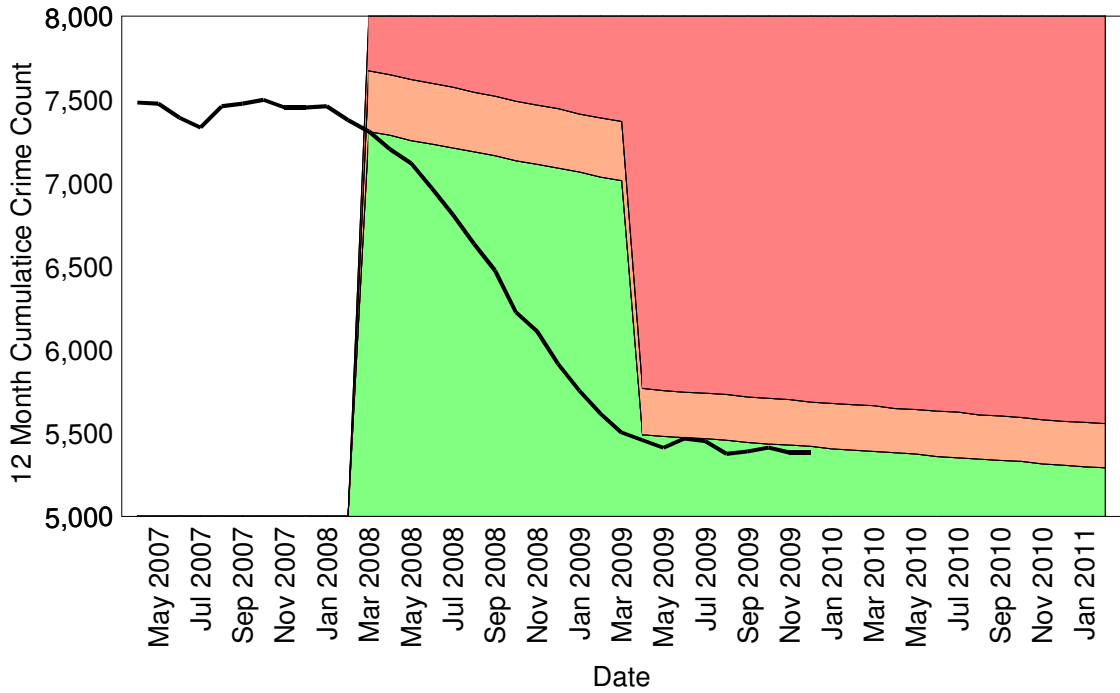
NI 16 Serious Acquisitive Crime Comparison of Monthly Crime Count



### NI 20 - Assault With Less Serious Injury

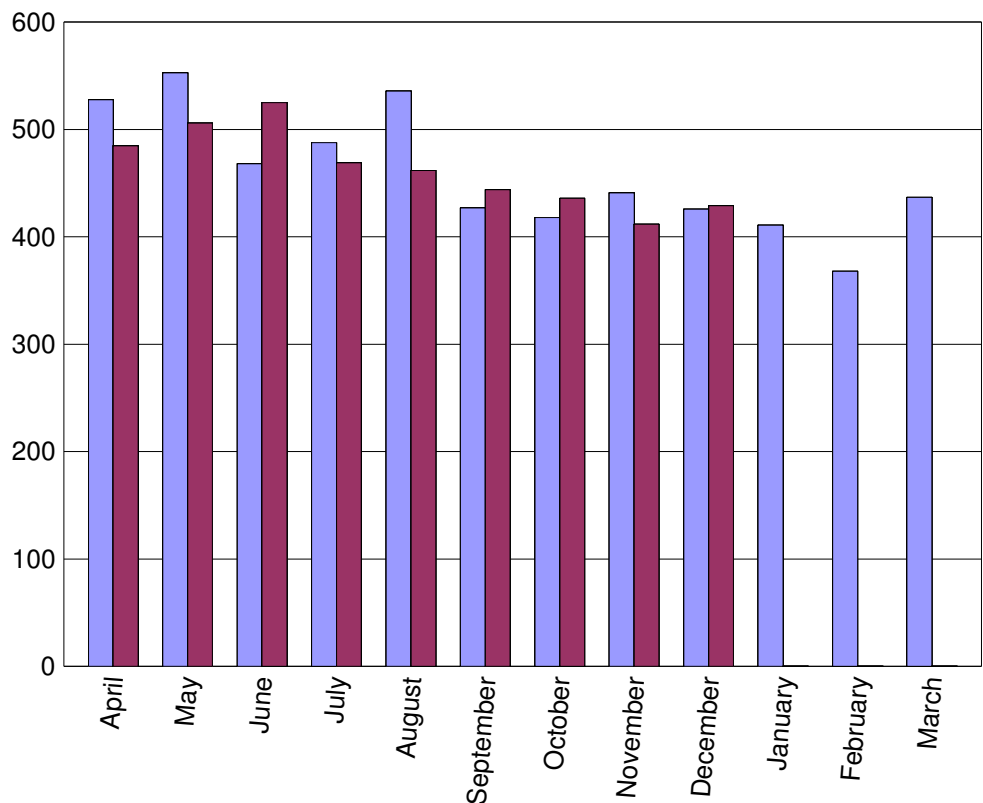
- Actual
- On Target
- Off Target by Less Than 5%
- Off Target By More Than 5%

NI 20 Assault With Less Serious Injury Performance



- 2008/09
- 2009/10

NI 20 Assault With Less Serious Injury Comparison of Monthly Crime Count



## **County Performance Comments**

### **NI 1 - Percentage of People Who Believe People From Different Backgrounds Get on Well Together in Their Local Area**

This has increased to 78% in the 2009 Residents Survey, an increase of approximately 30,100 people (18 yrs +). The increase in perception means it moves from the bottom quartile to the third, assuming all other County Councils do not change. We will not know until results of the 2010 Place Survey. The Residents Survey is used as a proxy measure only and not submitted into actual outturn.

### **NI 16 - Serious Acquisitive Crime**

The Administrative County is still GREEN no change from the last quarter and is now 6% within target. Again only Chesterfield is now showing as RED and is 12% off target, this is a 2% improvement from the last quarter.

High Peak, North East Derbyshire and South Derbyshire are all AMBER, though South Derbyshire is now only 2% within target.

Amber Valley, Bolsover, Derbyshire Dales and Erewash are all showing GREEN. Two areas Amber Valley and Erewash have seen improvements in performance but Amber Valley in particular, have improved their performance dramatically and are now 22% below target. This is a 16% decrease from the last quarter. A number of prolific and other priority offenders were targeted, arrested and found guilty for shoplifting in Amber Valley. They were jailed prior to Christmas. This will have gone some way to this improved performance and could be a strategy to use in other areas.

### **NI 18 - Adult Re-Offending Rates for Those Under Probation Supervision**

NI 18 shows 'Red' for the LAA but 'Amber' within the framework for the probation calculation based on 'statistical significance'. All 38 action points within the Reducing Re-offending Strategy are being met and the Accommodation pathway will be strengthened by 15 supported Units in Chesterfield and High Peak from April 2010. The PPO review, completed by March 2010, provides consistency to the schemes and dynamism to the selection and de-selection process. Discussions are in hand with the DCC manager on PSA 16 and the DCC HR Unit to improve employment opportunities. All the boroughs are engaged with the Strategy. Notable progress is being made in Erewash BC where support is given to an 'integrated' project for a group of offenders with probation, police and housing working in partnership. A £41k bid has been made to the Accelerated Partnership Fund to finance this project and its success will be replicated in other local authorities during 2010-11.



## **NI 20 - Serious Acquisitive Crime**

The Administrative County has remained GREEN, but again is only 1% within target. Two Districts are showing RED, these are High Peak and South Derbyshire, both of these were RED in the last quarter. South Derbyshire has moved from 15% over target to 23% over target. Actions undertaken in this area are not being effective. The High Peak has now had higher numbers of crimes than Bolsover. This is not the usual pattern for violent crime in these areas. Erewash has slipped into AMBER from GREEN and Amber Valley remains AMBER but performance has deteriorated from the last quarter for both of these areas. Derbyshire Dales and North East Derbyshire have remained GREEN and are stable. Two areas carrying the county are Bolsover and Chesterfield. These areas and improved their "difference from target" in the last period. Bolsover in particular has seen large reductions in assaults with less serious injury.

The PPO Scheme will be extended to include violent crime offenders from March 2010.

## **NI 27 - Understanding of Local concerns about Anti-Social Behaviour and Crime Issues Issues by the Local Council and Police**

The LAA target for this indicator is a 5% increase on 20.2% over 2 years. The LAA target is based solely on the county indicator not those of individual district and borough councils. The result in the 2008 Place Survey was 20% for the county, which is lower than the national (24.8%) and regional (23.4%) scores. The results for the districts and borough councils ranged from 20.7% in Erewash to 29.5% in Derbyshire Dales. However the response to the same question in the Resident's Survey for 2009 showed an increase from the Place Survey result of 20% to 23%. These results suggest there has been an improvement in people's perceptions of police and local councils understanding of local concerns of ASB and crime issues.

Operation Relentless, a joint police and partner initiative took place between 28 September and 8 November 2009 . An evaluation of Operation Relentless is pending.

A separate report with a breakdown of performance at district level will also be submitted to the SCTAG.

## **NI 32 - Repeat Incidents of Domestic Violence**

The target is for the re referral rate to rise to evidence that safety measures are being offered to a victim of domestic abuse who has been assisted by a MARAC but who has been re victimised. During January 2009 to December 2009 10.99% of repeat referrals were made, an increase from 8.62% the previous quarter. Work is being done to ensure that partner agencies identify victims of domestic abuse in these circumstances. This includes (using RIEP funding) developing a information sharing system which flags domestic abuse victims who have already been considered at a MARAC and multi agency training. Research available states that once repeat referrals are consistently made (over 27.1%) then a subsequent drop in repeat referrals will evidence that the MARAC is working to prevent domestic abuse

### **NI 39 - Rate of Hospital Admissions per 100,000 for Alcohol Related Harm**

This indicator reflects hospital admissions due in whole or in part to alcohol. The figure (1754) is a rough linear projection for the year ending December 2009, based on quarterly data to 06-2009. The figure exceeds both the 2009-10 and 2010-11 targets. However, quarterly data shows a dip in the first quarter of this financial year – this will be monitored. A recently compiled list shows over 70 work streams underway throughout the partnership to tackle this issue, from managing the night time economy to providing new treatment services to theatre productions for young people to work with alcohol misusing parents.

### **NI 47 - People Killed or Seriously Injured in Road Traffic Accidents**

During January to September 2009, 348 people were killed or seriously injured in road traffic accidents. This is 52 casualties (18%) above the pro rata target of 296. Data available to November shows there were 416 people killed or seriously injured during the January to November period. This is 55 casualties (15%) above the January to November target of 361 casualties. The LAA target to reduce the number of people killed or seriously injured in road traffic accidents to an average of 437 over the 3 year period 2007 to 2009 has not been achieved. With 493 people killed and seriously injured in 2007, 425 in 2008 and 416 casualties up to December 2009, this gives an average of 445 casualties over the 3 year period, 8 casualties above the LAA target.

### **NI 49 - Total Number of Primary fires per 100,000 Population**

During Quarter 3, Derbyshire Fire and Rescue Service have reduced the number of primary fires by 20% since Quarter 2. Area teams continue to utilise, develop and promote initiatives within the county aimed at reducing primary fires. The successful "Operation Relentless" , Key Individual Networks, Fire Safety Campaigns and the Christmas campaigns have all assisted in the reduction of incidents. Crews continue to provide Home Fire Safety Checks and liaise with the safer neighbourhood teams in an effort to identify trends and prevent the incidents. Scheduled campaigns engaging the public in the effects of cooking fires, should help reduce figures further.

This will be via a media campaign using, Twitter & Bluetooth, an up date of the Derbyshire Fire and Rescue Service Website, static display boards, a home fire case study and cooking road shows which include: Chip Pan demo unit, fire victim support, command and control unit, smoke tent, gazebo and display boards.

### **LI 1- Number of First-Time Entrants to the Youth Justice System at Court Entry Level**

The numbers of young people coming into court for the first time has continued to decline at a significant rate and is currently running at half of the target rate. This trend reflects greater discretion by the police in dealing with minor matters and the success of the prevention team in working with young people and their families and YOS staff in working with young people on pre-court disposals such as final warnings.

## **LI 2 - All Drug Users in Effective Treatment**

As for NI40, this performance activity is based on a rolling 12 months data collection. The difference between LI2 and NI40 is that NI40 only refers to opiate/crack users - LI2 refers to all drug users.

**DERBYSHIRE SAFER COMMUNITIES BOARD**

Title	ABG Funding Applications
Report written by	Sally Goodwin – DCC CS Manager
Attached	A separate email has been sent with full background information on all bids
Action/ Recommendations	<ol style="list-style-type: none"> <li>1. <b>That the SCB approves the following projects to be funded from the Performance Management Fund in line with the recommendations made by the SCTAG:</b> <ol style="list-style-type: none"> <li>a. <b>North East Derbyshire – £3,505 - Burglary and Car Crime</b></li> <li>b. <b>South Derbyshire – £3,200 Alert Box, Melbourne</b></li> </ol> </li> <li>2. <b>That the SCB approves the following projects to be funded from the Capital Fund in line with the recommendations made by the SCTAG:</b> <ol style="list-style-type: none"> <li>a. <b>Chesterfield – £10,271 - Langer Field Community Group Play Project – CCTV pole</b></li> <li>b. <b>South Derbyshire £9,000 – Town Centre CCTV II</b></li> <li>c. <b>Derbyshire Dales – £9,975 - CCTV Camera, Wood Street, Wirksworth</b></li> </ol> </li> <li>3. <b>That a full evaluation of the projects supported be submitted to a future meeting to assess impact.</b></li> </ol>

Area Based Grant, Performance Management – Revenue Funding

There is £9,547 available in the Performance Management Revenue Fund. There is one application for funding.

Project	Funding	Comment
North East Derbyshire – Burglary and Car Crime	£3,505	<b>Supported</b> - RAG status Amber. This project may assist in bringing the NI into the Green

There is a potential Performance Management Fund under spend of £6,942.

## Area Based Grant – Capital Funding

There is £30,095 available in the Capital Fund. The increased figure is due to an under spend of £13,119 on a previous Capital project and the withdrawal of another project which was valued at £10,000.

There are four applications for funding.

Project	Funding	Comment
Chesterfield – Langer Field Community Play Group Project – CCTV Pole	£10,271	<b>Supported</b> – following amendments requested by the SCTAG. Would provide CCTV camera pole/installation in the new MUGA at Langer Field.
South – Town Centre CCTV II	£9,000	<b>Supported</b> – Part of a £50,000 scheme providing CCTV in Swadlincote town centre.
Derbyshire Dales – CCTV Camera, Wirksworth	£9,975	<b>Supported</b> – Provides CCTV coverage in 3 <sup>rd</sup> highest crime/ASB area in Wirksworth.
South – Alert Box, Melbourne	£3,200	<b>Supported</b> – Will support the reduction of ASB in hotspot areas in the Wirksworth town centre.

There is a potential Capital Fund overspend of £2,351. In order to mitigate this overspend it is proposed to utilise some of the Performance Management Fund underspend to finance the Alert Box scheme.

This would give a final Capital underspend of £849 and Performance Management Fund underspend of £2,842.

### **Recommendation**

1. That the SCB approves the following projects to be funded from the Performance Management Fund in line with the recommendations made by the SCTAG:
  - a. North East Derbyshire – £3,505 - Burglary and Car Crime
  - b. South Derbyshire – £3,200 Alert Box, Melbourne
2. That the SCB approves the following projects to be funded from the Capital Fund in line with the recommendations made by the SCTAG:
  - a. Chesterfield – £10,271 - Langer Field Community Group Play Project
  - b. South Derbyshire £9,000 – Town Centre CCTV II
  - c. Derbyshire Dales – £9,975 - CCTV Camera, Wood Street, Wirksworth
3. That a full evaluation of the projects supported be submitted to a future meeting to assess impact.

## DERBYSHIRE SAFER COMMUNITIES BOARD

Title	ABG Resources Committed for 2010-2011
Report written by	Sally Goodwin – DCC CS Manager
Attached	Appendix A - Budget Summary Appendix B - Safe and Stronger Communities Fund Capital 2010/2011 Allocations – Reduction in budget
Action/ Recommendations	<ol style="list-style-type: none"><li><b>1. That the SCB accepts the SCTAG recommendations regarding the allocation of the ABG revenue budget for 2010/11. That is £200,000 to be split equally between the Community Safety Partnerships for local partnership programmes and £102,542 to be used as a Performance Management Fund.</b></li><li><b>2. That the SCB notes the 50% reduction in Capital allocation from the Safer and Stronger Communities Fund 2010/2011, revising the allocation for Derbyshire to £129,000, and the decision of SCTAG to defer allocation of fund until the final Operation Relentless evaluation has been provided.</b></li></ol>

### Purpose of the report

To provide an overview of the proposed ABG Resource Commitment for 2010-2011.

### Information

A breakdown of the budget for Area Based Grant 2010/11 is attached at Appendix A. The total budget is £895,794. It should be noted that the Safer Communities Board gave a 3 year commitment to the funding of posts from Area Based Grant and as such 2010/11 is the final year of the 3 year commitment. An uplift of 1.5% has been included for salary costs and an assumed 1.5% uplift has been attributed for all other partner contributions. Partners accepted this uplift as appropriate against their own contributions.

The SCTAG considered the allocation of the remaining fund in relation to LAA targets. Previously the remaining budget has been allocated with £200,000 split equally across the eight community safety partnerships and the balance allocated to a performance management fund. This was agreed again for the 2010/11 financial year with the performance management fund receiving £102,542.

Notification of a 50% reduction in the capital fund has been received and a copy of the letter is attached as Appendix B to this report. This was discussed at the SCTAG which agreed that the full evaluation of Operation Relentless should be considered before deciding upon allocation.

## **Recommendations**

1. That the SCB accepts the SCTAG recommendations regarding the allocation of the ABG revenue budget for 2010/11. That is £200,000 to be split equally between the Community Safety Partnerships for local partnership programmes and £102,542 to be used as a Performance Management Fund.
2. That the SCB notes the 50% reduction in Capital allocation from the Safer and Stronger Communities Fund 2010/2011, revising the allocation for Derbyshire to £129,000, and decision of SCTAG to defer allocation of fund until the final Operation Relentless evaluation has been provided.

ABG Resources Committed for 2008-2011

Appendix A

SCB Commissioning Priorities		Cost			Total over 3 Years
		2008/09	2009/10	2010/11	
<b>POSTS - FUNDING COMMITTED FOR 3 YEARS</b>					
<b>ASB Officer post and/or support actions/initiatives at CSO level</b>		<b>£ 192,000</b>	<b>£196,800</b>	<b>£ 199,752</b>	<b>£ 588,552</b>
Breakdown	DCC - ABG	£ 192,000	£196,800	£ 199,752	£ 588,552
	Derbyshire Fire and Rescue Service	£ 48,000	£ 49,200	£ 49,938	£ 147,138
	Grand Total	£ 240,000	£246,000	£ 249,690	£ 735,690
<b>PPO Probation Service Assistants</b>		<b>£ 78,476</b>	<b>£ 80,437</b>	<b>£ 81,644</b>	<b>£ 240,557</b>
Breakdown	DCC - ABG	£ 78,476	£ 80,437	£ 81,644	£ 240,557
<b>PPO Prison Tracker Post</b>		<b>£ 10,953</b>	<b>£ 11,227</b>	<b>£ 11,395</b>	<b>£ 33,575</b>
Breakdown	DCC - ABG	£ 10,953	£ 11,227	£ 11,395	£ 33,575
	DAAT - County	£ 10,953	£ 11,227	£ 11,395	£ 33,575
	DAAT - City	£ 10,953	£ 11,227	£ 11,395	£ 33,575
	Derbyshire Constabulary	£ 5,652	£ 5,793	£ 5,880	£ 17,325
	Grand Total	£ 38,511	£ 39,474	£ 40,065	£ 118,050
<b>Alcohol Arrest Referral Workers</b>		<b>£ -</b>	<b>£ 56,375</b>	<b>£ 57,221</b>	<b>£ 113,596</b>
Breakdown	DCC - ABG	£ -	£ 56,375	£ 57,221	£ 113,596
<b>Domestic Abuse Services (IDVA Workers)</b>		<b>£ 86,000</b>	<b>£ 88,150</b>	<b>£ 89,472</b>	<b>£ 263,622</b>
Breakdown	DCC - ABG	£ 86,000	£ 88,150	£ 89,472	£ 263,622
	DCC Community Safety Unit	£ 20,000	£ 20,500	£ 20,808	£ 61,308
	DCC Adult Care	£ 20,000	£ 20,500	£ 20,808	£ 61,308
	Derbyshire Constabulary	£ 20,000	£ 20,500	£ 20,807	£ 61,307
	Derbyshire Primary Care Trust	£ 20,000	£ 20,500	£ 20,807	£ 61,307
	Grand Total	£ 166,000	£170,150	£ 172,702	£ 508,852
<b>Sexual Violence Services (ISVA Workers)</b>		<b>£ 50,000</b>	<b>£ 51,250</b>	<b>£ 52,019</b>	<b>£ 153,269</b>
Breakdown	DCC - ABG	£ 50,000	£ 51,250	£ 52,019	£ 153,269
<b>Drug and alcohol Action Team (DAAT) - Delivery of Drugs and Alcohol Strategies</b>		<b>£ 97,800</b>	<b>£100,245</b>	<b>£ 101,749</b>	<b>£ 299,794</b>
Breakdown	DCC - ABG	£ 97,800	£100,245	£ 101,749	£ 299,794
<b>TOTAL - ABG ALLOCATED TO POSTS &amp; DAAT</b>		<b>£ 515,229</b>	<b>£584,484</b>	<b>£ 593,252</b>	<b>£ 1,692,965</b>



	<b>ABG Allocation</b>	<b>£ 858,042</b>	<b>£879,473</b>	<b>£ 895,794</b>	<b>£ 2,633,309</b>
less	ABG Allocated to Posts and DAAT	£ 515,229	£584,484	£ 593,252	<b>£ 1,692,965</b>
equals	ABG Balance	£ 342,813	£294,989	£ 302,542	<b>£ 940,344</b>
Other funding	Local CSP Partnership Programmes	£ 200,000	£200,000	£ 200,000	<b>£ 600,000</b>
	Performance Management (Priorities)	£ 142,813	£ 94,989	£ 102,542	<b>£ 340,344</b>



APPENDIX B

Mandie Campbell  
Director Drugs, Alcohol & Partnerships Directorate  
4th Floor Fry Building, 2 Marsham Street, London, SW1P 4DF  
Direct Line 020 7035 0334  
E-mail [Mandie.Campbell@homeoffice.gsi.gov.uk](mailto:Mandie.Campbell@homeoffice.gsi.gov.uk)  
[www.homeoffice.gov.uk](http://www.homeoffice.gov.uk)

Chief Executives, Local Authorities England

Our Ref

Your Ref

Date

20<sup>th</sup> January 2010

Dear Chief Executive

### SAFER & STRONGER COMMUNITIES FUND CAPITAL – 2010/11 ALLOCATIONS

You will recall that when the Provisional Local Government Finance Settlement was put before Parliament, the Home Office indicated the Safer & Stronger Communities Fund (SSCF) Capital Grants were under review.

I am writing to you as the delegated Budget Holder to advise that, following what has been a particularly difficult 2010/11 Capital allocation exercise within the Home Office, Ministers have decided to reduce these grants by 50%. CLG is releasing the revised allocation figures on its website today (set out at appendix 1), and I wanted to ensure that you are aware of this decision and the context within which it has been taken.

Against a backdrop of considerable pressures on all public expenditure, the Home Office has a significant shortfall in its Capital budget against requirements. As you would expect this shortfall is, in turn, reflected in a reduced allocation to the Crime & Policing Group and has necessitated some very difficult decisions as to how we minimise the impact on areas that we are funding.

We have not made these reduced Capital allocations lightly, and recognise that they are likely to have an impact on local delivery. They should, however, be seen in the context of over £8 billion Capital being allocated to local authorities in England next year and the fulfilment of the Home Office's commitments to protect the £80 million Resource funding to local partnerships in England and Wales from any funding reduction.

Please draw on the content of this letter in briefing your stakeholders following the updating of the CLG website. We have written to Home Office Regional Deputy Directors to inform them of these allocations.

With thanks and kind regards

Mandie Campbell  
Director Drugs, Alcohol & Partnerships

cc. Chairs of CDRPs  
Chief Constables  
Chief Executives – Police Authorities

**APPENDIX 1 - SAFER & STRONGER COMMUNITIES FUND CAPITAL – 2010/11 ALLOCATIONS  
BY LOCAL AUTHORITY**

<b>LOCAL AUTHORITY</b>	<b>SAFER &amp; STRONGER COMMUNITY FUND 2010/11 ALLOCATION - £'000</b>
Barking and Dagenham	34
Barnet	54
Barnsley	39
Bath & North East Somerset	26
Bedfordshire	67
Bexley	36
Birmingham	246
Blackburn with Darwen	27
Blackpool	28
Bolton	63
Bournemouth	32
Bracknell Forest	18
Bradford	97
Brent	56
Brighton & Hove	49
Bristol	111
Bromley	48
Buckinghamshire	86
Bury	43
Calderdale	38
Cambridgeshire	86
Camden	60
Cheshire	103
City of London	8
Cornwall	82
Coventry	67
Croydon	60
Cumbria	80
Darlington	21
Derby City	47
<b>Derbyshire</b>	<b>129</b>
Devon	109
Doncaster	52
Dorset	67
Dudley	55
Durham	93
Ealing	67
East Riding of Yorkshire	38
East Sussex	95
Enfield	52
Essex	188
Gateshead	37
Gloucestershire	102
Greenwich	48
Hackney	66

<b>LOCAL AUTHORITY</b>	<b>SAFER &amp; STRONGER COMMUNITY FUND 2010/11 ALLOCATION - £'000</b>
Halton	20
Hammersmith and Fulham	45
Hampshire	179
Haringey	60
Harrow	34
Hartlepool	22
Havering	35
Herefordshire	22
Hertfordshire	167
Hillingdon	50
Hounslow	48
Isle of Wight Council	16
Isles of Scilly	5
Islington	57
Kensington and Chelsea	42
Kent	219
Kingston upon Hull	75
Kingston upon Thames	22
Kirklees	74
Knowsley	29
Lambeth	84
Lancashire	197
Leeds	181
Leicester City	66
Leicestershire	110
Lewisham	52
Lincolnshire	104
Liverpool	108
Luton	41
Manchester	149
Medway	37
Merton	29
Middlesbrough	43
Milton Keynes	36
Newcastle upon Tyne	48
Newham	67
Norfolk	125
North East Lincolnshire	38
North Lincolnshire	26
North Somerset	31
North Tyneside	28
North Yorkshire	87
Northamptonshire	123
Northumberland	60
Nottingham	90
Nottinghamshire	142
Oldham	53

<b>LOCAL AUTHORITY</b>	<b>SAFER &amp; STRONGER COMMUNITY FUND 2010/11 ALLOCATION - £'000</b>
Oxfordshire	100
Peterborough	39
Plymouth	45
Poole	23
Portsmouth	34
Reading	43
Redbridge	47
Redcar and Cleveland	23
Richmond upon Thames	27
Rochdale	56
Rotherham	41
Rutland	8
Salford	69
Sandwell	67
Sefton	40
Sheffield	97
Shropshire	53
Slough	36
Solihull	41
Somerset	84
South Gloucestershire	37
South Tyneside	27
Southampton	40
Southend-on-Sea	28
Southwark	62
St Helens	34
Staffordshire	143
Stockport	64
Stockton-on-Tees	31
Stoke-on-Trent	55
Suffolk	102
Sunderland	54
Surrey	160
Sutton	26
Swindon	26
Tameside	49
Telford and the Wrekin	27
Thurrock	25
Torbay	23
Tower Hamlets	55
Trafford	50
Wakefield	54
Walsall	53
Waltham Forest	46
Wandsworth	57
Warrington	29
Warwickshire	86

<b>LOCAL AUTHORITY</b>	<b>SAFER &amp; STRONGER COMMUNITY FUND 2010/11 ALLOCATION - £'000</b>
West Berkshire	21
West Sussex	121
Westminster	63
Wigan	57
Wiltshire	57
Windsor and Maidenhead	30
Wirral	50
Wokingham	22
Wolverhampton	55
Worcestershire	88
York City	32
<b>TOTAL</b>	<b>9,398</b>

## DERBYSHIRE SAFER COMMUNITIES BOARD

Title	Operation Relentless Evaluation - Emerging findings
Report written by	Superintendent Paul Rouse
Action/ Recommendations	That the SCB note the findings from the evaluation for Operation Relentless and the 2010 dates for Operation Relentless.

### **Relentless Aims**

#### **To identify crime/ASB hot spots and confidence 'cold spots'**

These neighbourhoods were identified in the initial analytical bulletins.

#### **To develop an increased sense of community within those neighbourhoods**

Final events survey results show that 63% of people living in areas where ASB is a problem are more confident after Operation Relentless than before. Results of the confidence survey expected to be available for analysis mid February.

#### **To replace neglected places with areas of community pride**



Somercotes allotment project, one of many similar schemes throughout the county.

#### **To demonstrate partnership successes, particularly in key areas, with the aim of increasing community confidence**

There were 87 press releases, 95 articles published, 13 radio interviews were completed and the operation featured on TV twice. There were 7,122 page views on the police external website an increase of 22% on the previous Operation Relentless.

In a public telephone survey 11 (65%) respondents were aware of Operation Relentless to some degree. Those that had heard about Operation Relentless reported that communications had improved and they saw the police as approachable and pro-active.

### **Relentless Desired Outcomes**

#### **To identify and understand what raises community confidence**

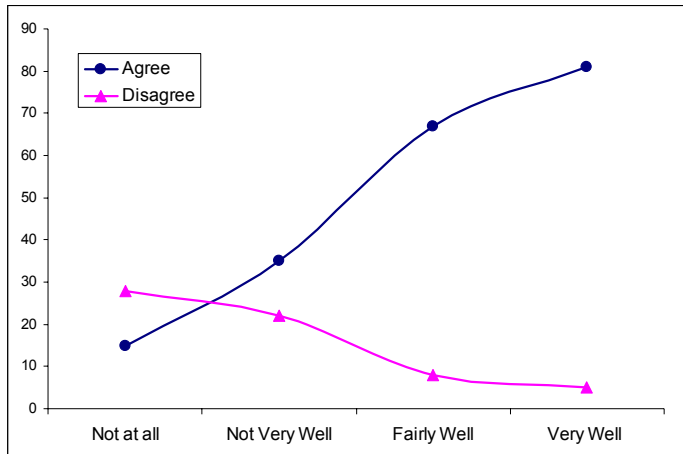
The November 2009 confidence survey of over 3000 people in Derbyshire has shown people are more likely to answer that they think partnerships are dealing with crime and disorder issues if they consider themselves 'Very well' informed. Those who think they are 'Not informed at all' are more likely to answer that they do not think the partnerships are dealing with the crime and

disorder issues. The chart demonstrates that 'confidence' increases as people become better informed.

### To increase confidence as a result of partnership activity

Staff reported increased community confidence:

- 20% have tangible evidence
- 50% have anecdotal public feedback



The community reported increased confidence

- 63% in areas where ASB is a problem
- 60% across whole county

Awareness of activity more likely to increase confidence

### To provide sustainable options

Several processes and activities have been adopted or are continuing after Relentless.

The Derbyshire Partnership Forum has adopted the 'Relentless' model to help co-ordinate activity towards LAA targets throughout 2010.

Co-location / Integrated working and a common problem solving model are being considered.

Several models of enhanced community contact were seen during Relentless with many local variations.

The final evaluation will carry a number of case studies of good practice with advice and a guide as to suitability, potential pitfalls and value for money.

### To understand the key factors influencing confidence amongst survey respondents

People answer the question on the basis of their experience of anti social behaviour over a variety of time periods. Crime if considered at all attracts a very subjective interpretation, for example burglary for the home owner and shoplifting for the business person.

The addition of the word 'successfully' in the Place Survey attracts a more critical answer suggesting that 'dealing' and 'dealing successfully' do mean something different to the respondents.



**To identify and promote positive links between projects (especially short term) and raised confidence levels**

This work has still to be developed.

**2010 Dates**

Operation Relentless scheduled for six weeks commencing 27 September 2010 to 7 November 2010.

**Recommendations**

**That the SCB note the findings from the evaluation for Operation Relentless and the 2010 dates for Operation Relentless.**

## DERBYSHIRE SAFER COMMUNITIES BOARD

Title	<b>Violence, Alcohol and Licensing Update</b>
Presented by	Sally Goodwin, DCC CS Manager
Recommendations	<b>Recommendation:</b> That the SCB supports the SCTAG decision regarding the report recommendations.

### **Purpose of the report**

To provide an update on the progress of the VAL's and to make recommendations to support their on-going development.

### **Background**

In February 2008 the SCB approved a number of recommendations relating to alcohol, licensing and violent crime. This led to the establishment of Violence, Alcohol and Licensing Meetings (VAL's) covering all districts. The meetings have two primary functions;

- To identify the most problematic premises, both on and off licence, and co-ordinate a multi-agency response to tackling them.
- To co-ordinate activity to support the reduction of alcohol related violence and to ensure effective management of the night-time economy.

It was subsequently agreed in June 2008 that the SCTAG/SCB would provide the Strategic lead for the licensing, alcohol harm and violent crime activities across the county and would provide governance for the VAL's. As such whilst the groups sit at a local level they are accountable to the SCTAG/SCB.

### **Information**

Over the last two years the VAL's have developed significantly and there are currently 6 in operation, these cover;

- Amber Valley and Erewash (A Division)
- Bolsover
- Chesterfield
- Derbyshire Dales and High Peak (B Division)
- North East Derbyshire
- South Derbyshire

It is worth noting that the reorganisation of Police Divisions from April 2010, may impact on the VAL's, however the likelihood is that this will only affect Amber Valley and Erewash.

Over the last two months we have been working with the Chairs and key stakeholders in each of the VALS's to provide a update on how they are currently functioning and what issues they face.

With the exception of the South Derbyshire meeting all VAL's are chaired by the Police, varying from PC to Chief Inspector level. The meetings all operate differently with some dealing with both problematic premises and strategic issues and others focusing on the management of problem premises. In some cases the strategic issues are picked up at other meetings.

In undertaking the review a number of issues have been identified;

- **Administration and Accountability:** Those VAL's which work most effectively have identified administrative support. This is particularly important, as we need to be transparent in how we are identifying, working with and de-listing problem premises with a clear audit trail should we be challenged on this. In addition, it is vital that evidence of outcomes is captured to support Comprehensive Area Assessment (CAA).

This was an area for improvement in most VALs even where information is being recorded. A clear account in relation to Identifying problem premises, tasking, actions and outcomes should be clearly documented.

In the worst case, actions were not being tasked effectively and were subsequently lost between meetings.

As a minimum it is suggested that VAL's include the following when documenting problem premises;

- Premise name
- What evidence/intelligence has been used to identify it as a problem premise.
- Name of Designated Premise Supervisor (DPS)
- Agreed actions: inc. who is responsible and by when
- Progress against actions
- If the premise has be de-listed and why?
- What is the outcome, inc any PR

Records of de-listed premises should be kept to provide both evidence of effectiveness and as a reference should the premise come to attention again in the future.

A spreadsheet to support the VAL's to capture this information could be produced to ensure consistency, if appropriate. There would be no requirement to use this as long as VAL's are confident they are capturing the required information.

- **Training:** Although those directly involved in enforcement activity have a good understanding of licensing legislation, this is not always the case for other stakeholders, and it was raised that this impacts on the quality of the contribution they make to meetings.
- **Representation at Meetings:** Key partners across the county are on the whole consistently attending VAL meetings. However lack of PCT representation has been raised by all. It was felt that PCT colleagues who have attended the meetings in the past feel that they are unable to positively contribute to the work of the VAL's.

It has already been acknowledged that not all VAL's consider strategic issues around alcohol and violent crime and in these cases it may be more appropriate that the PCT attend meetings where these issues do get discussed rather than the VAL.

As a countywide service Trading Standards are members of all VAL's and are making a positive contribution, viewing them as a valuable opportunity to work with partners in a more targeted way. However, when VAL's were originally established they were based on BCU boundaries, as they have developed they have migrated to smaller geographic areas and as such it is not always possible to attend all meetings.

- **Enforcement Action:** In some areas there was a lack of clarity within Local Authority Licensing Departments about how much they were able to be actively engaged in early intervention enforcement activity, for example multi-agency visits, as it was felt that this may cause a conflict of interest if formal enforcement action was taken at a later date.

As such it would be useful to clarify, what restrictions the law does place on Licensing Department to ensure all tools and powers available to us are used to full effect.

### Accreditation Schemes

A report to the SCB in Sept 2008 included research on the national 'Best Bar None' scheme which is a voluntary accreditation scheme to promote the responsible retailing of alcohol. The SCB accepted the recommendation not to support the countywide roll out of a 'Best Bar None' scheme as there was no robust evaluation to support its effectiveness. As an alternative VAL's were asked to consider a local accreditation scheme which they would oversee.

To date there have been no accreditation schemes established within the county via the VALs. However, a national Mandatory Code of Practice for the retail of alcohol has just been published. It includes 5 conditions, these are;

<b>Mandatory Licensing Condition</b>	<b>Applies to</b>	<b>Date it will come into force</b>
1. Banning irresponsible promotions; such as drinking games, speed drinking, women drink for free, all you can drink for £10 etc.	On-trade and qualifying club premises certificate	April 2010
2. Banning the dispensing of alcohol directly into the mouth	On-trade and qualifying club premises certificate	April 2010
3. Ensuring the provision of free tap water for customers	On-trade and qualifying club premises certificate	April 2010
4. Ensuring that an age verification policy is in place, which includes checking the ID of anyone who appears to be under 18 who attempts to purchase alcohol.	On-trade and qualifying club premises certificate	October 2010
5. Ensuring that small measures of beers, spirits and wines are made available to customers	On-trade and qualifying club premises certificate	October 2010

To support the introduction of these conditions the Home Office will be revising the statutory guidance for licensing authorities and will be issuing good practice guidance and organising a series of training workshops for practitioners.

It is therefore suggested that this action is put on hold until the good practice guidance is published, when a further report will be produced for consideration by the SCB. This would ensure a consistent countywide approach to the implementation and enforcement of the Code.

#### Holistic approach - Management of the Night-time economy in Chesterfield

Within the Community Safety Agreement there is an action to approach the management of the night-time economy in Chesterfield in a holistic way engaging all key stakeholders. A considerable amount of activity is already being undertaken by individual partners in Chesterfield and there is a need to bring this together. A sub-group of the VAL has been formed, chaired by Christine Flinton, Assistant Community Safety Manager for DCC in order to establish a co-ordinated approach and to highlight and address any gaps.

Any best practice identified through this sub-group will be shared across the county.

**SCTAG recommendations to SCB:**

- To strengthen links between the VAL's and the SCTAG/SCB a representative from Community Safety at a county level should attend each of the VAL meetings, thereby allowing best practice to be shared cross county and support consistency in delivery.
- Partners ensure VAL's have effective administrative support and have a recording system in place to capture the data suggested.
- A training session be commissioned to increase knowledge of licensing legislation amongst key stakeholders.
- The PCT identifies a representative in each area who could engage with this agenda, and that the CSP in each area works with them to identify the most appropriate meeting for them to attend.
- A paper clarifying the role Local Authority Licensing Departments can play in early interventions with Licensed Premises be produced for use by the VAL's.
- No further work is done in relation to the consideration of an accreditation scheme until the publication of the good practice guidance when a further report will be produced for consideration by the SCB.
- Six monthly progress reports are provided to monitor progress report outcomes.

## DERBYSHIRE SAFER COMMUNITIES BOARD

Title	<b>Derbyshire County Council Adult Care – Safeguarding Adults</b>
Report written by	Andrew Hambleton (Safer Derbyshire/Adult Care)
Action/Recommendations	<b>That the SCB notes the report and the actions taken this year by the Domestic Abuse County Forum.</b>

### **Introduction**

This is the annual report to the SCB. It includes an update from the Safeguarding Vulnerable Adults Partnership and an annual update from the Domestic Abuse County Forum. The Forum is an expert group to the Safer Communities Board.

### **Derbyshire Safeguarding Vulnerable Adults Partnership**

Derbyshire Safeguarding Vulnerable Adult Partnership has members from statutory agencies and relevant commissioned and voluntary sector organisations with responsibility for the protection of vulnerable adults from abuse and neglect.

A joint meeting of members of the Health and Wellbeing Partnership and the Safer Communities Board in September 2008 discussed how each agency could play its part in ensuring that abuse and neglect is prevented through community safety initiatives but also that if abuse does occur then it is identified and re-victimisation prevented through the implementation of joint policy and procedures.

The work of the partnership is described in the annual report for 2008/9, for further information visit the Safer Derbyshire website at:

[http://www.saferderbyshire.gov.uk/staying\\_safe/protection\\_of\\_vulnerable\\_adults/default.asp](http://www.saferderbyshire.gov.uk/staying_safe/protection_of_vulnerable_adults/default.asp)

A focus of work for the partnership this year has been ensuring that abuse and neglect of vulnerable adults is identified by all agencies and help provided through referral in to safeguarding procedures.

There has been an over trend increase of referrals into safeguarding to 584 cases which would point to 869 referrals by year end compared with 412 for 2008/9.

It is anticipated that the current publicity campaign, which is being promoted by the Derbyshire Partnership with wide distribution of posters, information leaflets and staff briefing information, will continue to increase referrals from

the public currently standing at 114 referrals for the half year against 87 in the previous full year.

There is also ongoing work with partner agencies, specifically those with public protection duties, which has increased referrals from NHS and Police colleagues.

The partnership has a joint safeguarding adults policy and procedure. This was reviewed in November 2009. For further information visit the Safer Derbyshire website at:

[http://www.saferderbyshire.gov.uk/staying\\_safe/protection\\_of\\_vulnerable\\_adults/default.asp](http://www.saferderbyshire.gov.uk/staying_safe/protection_of_vulnerable_adults/default.asp)

A particular focus of the procedures is to ensure close links with community safety strategies via an improvement plan. The need for close work with community safety is highlighted in the Pilkington report from Leicestershire.

The partnership has reviewed its membership and structure at the January meeting in light of the withdrawal of Derby City Council extending its membership to include Derbyshire Health United, the Prison Service, and Derbyshire Fire and Rescue Service. Representation from District Councils will be considered by the Derbyshire Chief Executives Group at its February meeting.

Future development of the partnership includes having a chair for the partnership that is independent of any of the partner agencies, and recruitment is underway.

A service inspection of safeguarding services has been completed by the Care Quality Commission which feeds into the Comprehensive Area Assessment. Feed back from the inspection (including an overall assessment of performance) is expected by 12 March 2010.

### **Domestic Abuse**

From 1 April 2010 a new post of Service Manager Domestic Abuse funded by Derbyshire Adult Care and working within Safer Derbyshire and with Derbyshire Children and Younger Adults will further contribute to the co-ordination of the work of countywide and local partnerships in this area.

There are no specific issues to raise at the present time.

### **Recommendation:**

**That the SCB notes the report and the actions taken this year by the Domestic Abuse County Forum.**



## DERBYSHIRE SAFER COMMUNITIES BOARD

Title	<b>Inter-Agency Guidance - “Working together on Gypsy and Traveller Issues”</b>
Report written by	David Lowe
Attached	Appendix A - Guidance Document
Action/ Recommendations	<b>That the Board endorses the Inter Agency Guidance “Working Together on Gypsy and Traveller Issues” and identifies any further action in relation to unauthorised encampments.</b>

Derbyshire Traveller Issues Working Group membership is open to all public authorities and representatives of Gypsy and Traveller organisations in Derbyshire.

The group was formed in response to the need for all agencies to work together to make sure that all services are delivered fairly to Gypsies and Travellers in compliance with the law, government guidance and local authorities' equalities and Human Rights policies.

The attached protocol is in the process of being revised. Although it has been in existence for a number of years it has never been considered by the Safer Communities Board.

All partners have a role in balancing support for the travelling community with the settled community. This is not always an easy balance to strike. Some districts provide sites, most do not. The County Council employs a full time officer whose prime remit is to deal with unauthorised encampments. Since his appointment some five years ago the number of unauthorised encampments has fallen but they can still be a cause for considerable concern. In the majority of cases a court summons has to be issued before travellers move from unauthorised locations (often highways) at a cost of £200 plus considerable officer time.

Partners are asked to comment on the protocol and to consider whether existing resources (eg SNTs) or powers could be used more effectively.

### **Recommendation**

That the Board endorses the Inter Agency Guidance “Working Together on Gypsy and Traveller Issues” and identifies any further action in relation to unauthorised encampments.

# Inter-Agency Guidance

## “Working together on Gypsy and Traveller Issues”



# **CONTENTS**

<b>Introduction</b>	<b>3</b>
<b>Definition of Gypsy and Traveller:</b>	
<b>Mandla Criteria: Definition of an ethnic group</b>	<b>4</b>
<b>Romany Gypsies</b>	<b>4</b>
<b>Irish Travellers</b>	<b>4</b>
<b>New Travellers</b>	<b>5</b>
<b>Show People</b>	<b>5</b>
<b>Language</b>	<b>5</b>
<b>Statements of Commitment</b>	<b>6</b>
<b>Contacts</b>	<b>11</b>
<b>Traveller Sites in Derbyshire</b>	<b>13</b>
<b>Unauthorised Encampments</b>	
<b>The Law</b>	<b>14</b>
<b>Principles to be followed</b>	<b>15</b>
<b>Police and their powers</b>	<b>16</b>
<b>Anti Social Behaviour</b>	<b>17</b>
<b>Regaining possession of local authority land</b>	<b>17</b>

# INTRODUCTION

This document has been produced by the Derbyshire Traveller Issues Working Group.

Membership of the group is open to all public authorities and representatives of Gypsy and Traveller organisations in Derbyshire.

The group was formed in response to the need for all agencies to work together to make sure that all services are delivered fairly to Gypsies and Travellers in compliance with the law, government guidance and local authorities' equalities and Human Rights policies. This protocol identifies how we will do this.

Members of the group are committed to working together but also recognise that each partner organisation has its own policies and procedures which will be respected.

Information about the group, how to contact us and details of Gypsy and Traveller accommodation in Derbyshire can be found on page 13.

The terms of reference of the group are:

- To co-ordinate public authorities' activities on Gypsy and Traveller issues
- To develop better links with Gypsies and Travellers, including consultation and feedback
- To share information to develop good practice to ensure that Gypsy and Traveller needs are met
- To work towards mainstreaming Gypsy and Traveller issues
- To assess the need for and promote solutions towards the shortage of appropriate sites and accommodation and support
- To consider health and education as a priority
- To deliver and support training on Gypsy and Traveller issues
- To gather information from other working groups on relevant issues
- To identify and disseminate good practice
- To take responsibility for specific tasks
- To work together to promote community cohesion across Derbyshire
- To support public authorities' Race Equality and Single Equality Schemes
- To carry out their duties to provide Race and other forms of equality

## DEFINITION OF GYPSY AND TRAVELLER

'Traveller' is a generic term used to describe groups of people whose lifestyle or culture is rooted in a nomadic way of life.

Gypsies of Romany origin (English, Welsh, Scottish and European Travellers) and Irish Travellers live in Derbyshire, or use many parts of Derbyshire as a traditional stopping place and have done so for hundreds of years. Other Travellers are also found within the county.

### Mandla Criteria: Definition of an ethnic group

The Mandla Criteria, drawn up by the House of Lords after the case of Mandla v Lee relating to Sikhs in 1983, is now used as a legal definition of what constitutes an ethnic group. The criteria are as follows:

#### **Essential Criteria:**

A long shared history coupled with a conscious sense of distinctness;  
A cultural tradition of its own including family and social customs often but not necessarily associated with religious observance.

#### **Relevant Criteria:**

A common geographical origin or small number of common ancestors;  
A common language not necessarily peculiar to that group;  
A common literature, including folklore or oral traditions;  
A common religion different from that of neighbouring groups;  
The characteristic of being a minority or being oppressed by a dominant group within a large community.

### **Romany Gypsies**

Romany Gypsy people are an indigenous ethnic minority group which originated in India. Their language is Romanes.

### **Irish Travellers**

Irish Travellers are an indigenous nomadic ethnic minority group found in both Ireland and Britain. They have their own language which is Cant or Gammon.

### **Other groups (not qualifying as ethnic groups under the Mandla criteria):**

## **New Travellers**

New Travellers (sometimes referred to as New Age Travellers) are generally former house-dwellers that now travel. They are not a recognised ethnic group. Many New Travellers have been travelling for a number of years and some have children that have only ever known a travelling lifestyle.

There are a number of reasons why people travel. Some New Travellers travel because the alternative for them would be homelessness and/or poverty. People may travel in an attempt to find employment around the country. There are also many New Travellers who have made a conscious decision to attempt to adopt the way of life of traditional Travellers, or to construct such a way of life for them.

## **Show People**

Show People or travelling Show People are people who organise and run fairgrounds.

In the UK, workers on the rides (who are usually from the local area) are often mistaken for travelling Show People.

A Show Person would refer to him or herself as a Traveller; however, to outsiders the title 'Show People' is used to differentiate people who organise fairgrounds from other travelling communities.

## **Language**

As with all other ethnic groups, there may be difficulties and barriers due to language. Although English is used, experiences of formal education vary and written communication might be inappropriate. Language used by Travellers may reflect Romany or other traditional language cultures.

## **STATEMENTS OF COMMITMENT**

**Amber Valley Borough Council, Bolsover District Council, Chesterfield Borough Council, Derby City Council, Derbyshire County Council, Derbyshire Dales District Council, Erewash Borough Council, High Peak Borough Council, North East Derbyshire District Council, South Derbyshire District Council**

Each of the District and Borough Councils in Derbyshire provides a range of common services in relation to Gypsies and Travellers. These include dealing with planning enquiries and applications, receiving homeless applications, and managing both authorised Traveller sites and unauthorised encampments.

These services are statutory functions and often require hard decisions. In undertaking all these responsibilities members of the TIWG are committed to providing fair treatment to all sections of the community. To this end member organisations will ensure that all persons are treated fairly regardless of sex, sexual orientation, marital status, race, colour, nationality, ethnic, or national origin, religion, age, disability, gender identity or any other grounds. The duty for public authorities to promote race equality under the Race Relations Act 1976 and the Race Relations (Amendment) Act 2000 (due to be updated in Equality Bill) , which provide legal protection against discrimination, directly or indirectly, on grounds of colour, race, nationality and ethnic or national origin, is recognised by all members.

### **Connexions Derbyshire**

Connexions Derbyshire is committed to providing:

- Support services to young people including help from personal advisers to plan educational and life goals
- Independent careers information, advice and guidance
- Advice on health, lifestyle, housing, financial support and other personal issues to assist in achieving goals
- Information about and access to personal development opportunities to broaden horizons and develop talents
- Co-ordination of access to specialist advice and services where needed to remove barriers to learning and achievement
- Liaison with schools to promote and assist in making appropriate provision for Traveller children
- Support to ensure continuity of education as young people move between schools

- Monitoring of access, attendance and achievement of Traveller children
- Support at key transition stages – secondary transfer and at the end of Key Stage 4
- Inter-agency work to promote the take up of lifelong learning opportunities post 16
- Support for accreditation schemes through referral and awareness raising
- A ‘voice’ in planning and development of the service through structures designed to involve young people
- Services to schools and colleges including careers education help to individuals
- Advocacy on behalf of young people, particularly in provision of learning and work opportunities.

### **Derby and Derbyshire Traveller Education:**

The local authority has a duty to ensure that school places are available for all children residing, either temporarily or permanently, in the area. This duty extends to Traveller children, who are entitled to equal access to education irrespective of whether they are living or encamped officially or unofficially.

Section 14 of the Education Act 1996 places a duty on local authorities to make sure there are sufficient school places for all pupils to be able to access education appropriate to their age, ability, and aptitude. Local authorities are required to consider their statutory duties with regard to education and social services under the Children Act 1989 when carrying out evictions. The county council continues to have a responsibility to find school places during the time in which the children are living in Derbyshire.

### Traveller Children’s Education Advisory and Support Team (TEAST):

Almost all councils with a responsibility for education in England and Wales now have a Traveller Education Service. Additional funding to Local Authorities to support education for Traveller children has been available for over twenty years. Funding is currently through the Vulnerable Children’s Grant within the Standards Fund. Derby and Derbyshire operate a joint Traveller Education Advisory and Support Team (TEAST) that works to support the Local Authority and schools in carrying out statutory responsibilities.

TEAST makes visits to mobile Travellers. If there are no children present, the service has no further professional involvement. Families requesting information on other issues will be given the appropriate contacts.

TEAST promotes on behalf of the local authority:

- Fair and Equal Access



- Continuity of education
- Achievement and success

Summary of services to schools:

Advisory support, pupil support, training and use of resources (at no charge) and copies of policy guidelines. Transport from home to school is also funded in some circumstances to promote access and regular attendance particularly where children are highly mobile and resident on unofficial sites. TEAST provides schools with information on educational support and culture to ensure that Traveller children have a positive experience.

As well as providing support for schools TEAST is committed to an inclusive approach to education and to multi-agency working with the following:

- Sure Start
- Connexions
- Early Years Providers
- Social Care Professionals
- Health Professionals
- Community Education Services
- Parent Partnership
- Special Educational Needs (SEN) Support Services
- Other Traveller Education Services
- Derbyshire Gypsy Liaison Group

For further details and an information leaflet about TEAST or for other contacts telephone (or fax) 01332 716806 or e-mail: [nigel.groom@derby.gov.uk](mailto:nigel.groom@derby.gov.uk).

## **Derbyshire Constabulary**

Derbyshire Constabulary is committed to providing a high-quality policing service to everyone in Derbyshire. We use the following core values to deliver this commitment:

- Integrity
- Respect
- Performance
- Responsibility
- Innovation

Safer Neighbourhood teams are locally based throughout Derbyshire and are dedicated to making areas safer, cleaner and a more pleasant place by working in partnership on locally identified priorities. A list of all Safer Neighbourhood teams and neighbourhood local profiles can be found at <http://www.derbyshire.police.uk>.

The Policing Pledge supports law-abiding citizens and pursues criminals relentlessly to keep neighbourhoods from harm. The Policing Pledge sets out the standards of service the public can expect from policing. Full details about the Policing Pledge can be found at <http://www.derbyshire.police.uk>.

The Association of Chief Police Officers (ACPO) has developed national guidance on the policing of unauthorised encampments, which Derbyshire Constabulary has adopted. The benefit of a national approach is fairness and consistency across England and Wales. The full public document can be found at <http://www.acpo.police.uk/policies.asp>

## **Derbyshire County Council**

The Council's policy is to provide services fairly to all sections of the community and to give equal treatment to its employees and service users whatever their age, disability, HIV status, marital status, race, religion, sex, sexuality, gender identity, ethnic or national origin.

The Council recognises that people from ethnic minority groups face discrimination.

The Council recognises its legal duties to promote race equality as set out in the Race Relations Act 1976 and the Race Relations (Amendment) Act 2000, as follows:

- To eliminate unlawful discrimination
- To promote equality of opportunity
- To promote good relations between persons of different racial groups.

The Council also recognises that the promotion of race equality needs to involve making effective arrangements that will help to meet the objective of race equality, including preparing a race equality scheme and monitoring employment procedures and practice.

## **Derbyshire Gypsy Liaison Group**

Over the years the group has been involved in supporting equal access to education and health care but the main issue of recent years has been and still is the struggle for sites whether these are private or public authority sites. The group liaises and mediates with County and District authorities especially the Planning and Control departments. The group lobbies on a national level for the rights of Gypsy People and aims to:

- Seek to ensure stopping times and prevent evictions
- Take families through the planning application system
- Advise County Council and District Borough Councils on various matters
- Produce specific educational material for Gypsy and Traveller children
- Implement better Police training on a national level through the Moving Forward Project in conjunction with Derbyshire Police

- Send representation to local meetings and national conferences
- Work with Gypsy organizations within Europe to bring about better understanding of Romani Gypsy Culture

The group's aim is to bring about a better understanding and acceptance of the Gypsy and Traveller life.

## **The Environment Agency**

The Environment Agency is the leading public body for protecting and improving the environment in England and Wales. Its vision is for people to enjoy a rich, healthy and diverse environment, now and in the future. Air, land and water are cleaner, wildlife flourishes, resources are used more wisely and everyone enjoys a better quality of life.

The Agency has a major role in regulating environmentally harmful activities. It administers and upholds the laws protecting people and the environment from the effects of pollution incidents and illegal waste operations. In accordance with the Agency's Customer Charter, its staff will behave in a polite, professional way and will respect every individual's rights.

The Agency is committed to sustainable community development, and much of its work is delivered in partnerships - for instance with local businesses and interest groups. Its work complements that of local authorities where illegal waste disposal activity impacts seriously on local amenity or air quality. The Agency takes the lead in dealing with waste posing a pollution or health risk and works closely with other regulatory bodies and the Police to ensure an efficient approach to proportionate regulation.

As well as being a firm, fair regulator, the Agency is available to offer advice and help. Information is available on the Agency's web-site [www.environment-agency.gov.uk](http://www.environment-agency.gov.uk), and enquiries can be made by telephone on 08708 506506. In the event of a pollution incident or witnessed illegal waste activity, the Agency is available to take the details 24 hours a day on 0800 807060.

## **NHS Derbyshire**

Commitment to Improving Health

In order to improve health and reduce health inequalities, the NHS will:

- Focus on groups and communities whose needs are greatest;
- Ensure equal access to services for equal need – whilst recognising that some may have needs greater than others;

- Recognise ethnicity and diversity within a framework described by current legislation;
- Be specific and understandable to the communities and groups with which we work, whilst based on local people's knowledge and experience;
- Deliver services in the context of a 'Patient and Public-Led NHS', which supports an advocacy role for *all* practitioners to ensure 'real empowerment of people to improve their health' i.e. where services work *with* people to support them with their health needs.

## CONTACTS

The following telephone numbers will enable you to contact members of the Traveller Issues Working Group on matters of policy and good practice.

If you wish to discuss an unauthorised camp, please ring the local council or the Police.

**Amber Valley Borough Council**  
Chief Executive's Department, Legal Section  
Tel: 01773 841662

**Bolsover District Council**  
Tel: 01246 240000

**Chesterfield Borough Council**  
Tel: 01246 345345

**Connexions Derbyshire**  
Equal Opportunities and Diversity Manager  
Tel: 01773 XXXXXXXXXXX

**Derby City Council**  
Housing Strategy and Development Unit  
Tel: 01332 255895

**Derbyshire Constabulary**  
Gypsy and Traveller Liaison Officer  
Tel: 01773 572063  
[john.coxhead.524@derbyshire.pnn.police.uk](mailto:john.coxhead.524@derbyshire.pnn.police.uk)

**Derbyshire County Council**  
Chief Executive's Office, Policy Unit, Tel: 01629 538384  
Legal Services (dealing with unauthorised encampments), Tel: 01629 538466  
Older People and Vulnerable Adults, Tel: 08456 058 058  
Early Years & Childcare Service, Joanne Robinson, Tel: 08456 058 058

**Derbyshire Dales District Council**  
Tel: 01629 761100

**Derbyshire Gypsy Liaison Group**  
Telephone: 01629 732744 / 583300

**Erewash Borough Council**  
Policy and Development Team  
Tel: 0115 907 2217

**NHS Derbyshire**  
Jane Horton  
Amber Valley PCT  
Tel: 01773 525099 ext 5110

**North East Derbyshire District Council**  
Tel: 012546 217246

**South Derbyshire District Council**  
Environmental Health Division  
Tel: 01283 221000

**The Environment Agency**  
[www.environment-agency.gov.uk](http://www.environment-agency.gov.uk)  
Tel: 0800 807060

# TRAVELLER SITES IN DERBYSHIRE

## Public Traveller Sites in Derbyshire

There are three sites owned by Derbyshire County Council and one privately owned site which works in liaison with the local council. Details of how to contact the sites are set out below. Vacant pitches may be available or it may be necessary to join a waiting list.

### **Foston, near Sudbury**

A long-stay site, with 22 pitches, owned by Derbyshire County Council and managed by South Derbyshire District Council.

For enquiries please contact the housing department of South Derbyshire District Council, telephone 01283 221000.

### **Lullington Crossroads, near Swadlincote**

A long - stay site, with eight pitches, with a provision for a small number of transit caravans owned by Derbyshire County Council and managed by South Derbyshire District Council.

For enquiries please contact the environmental health division of South Derbyshire District Council, telephone 01283 221000.

### **Corbriggs, Winsick, near Chesterfield**

A long-stay site, with 16 pitches, owned by Derbyshire County Council. The site is run by a leaseholder under a joint management agreement with Derbyshire County Council and Derbyshire Gypsy Liaison Group.

For enquiries please contact Derbyshire Gypsy Liaison Group on 01629 583300.

### **Blackbridge Caravan Site, Pleasley near Shirebrook**

This is a long - stay site with 28 pitches, which is privately owned, but liaises with Bolsover District Council to support mobile Travellers seeking accommodation. (presently under major redevelopment)

For enquiries about pitches on the site, please ring the warden, Barry Daley 07774953958 or Samantha Bentley, Bolsover District Council 01246 242315.

# UNAUTHORISED ENCAMPMENTS

## The Law

A local authority which has an interest in the relevant land may bring action in the County Court under the Civil Procedure Rules or the Magistrate's Court under the Criminal Justice and Public Order Act 1994.

The civil procedure is also available to owners of land, where travellers are on their land without the owner's consent.

The responsibility for starting legal action to regain possession of the land or highway rests with the following:

- Public lands (e.g. parks, some car parks, some industrial land) - local authority, which is the landowner.
- Public Highway - County Council or Highways Agency
- Private land - It is recommended that private landowners should seek independent legal advice when there are unauthorised encampments on their land. It may be possible for private land owners to use Common Law to reposes their land. Private landowners should be aware that, where they permit encampments on their land, there will be a need for planning permission for the use of the land where it exceeds permitted development. The District Council is the relevant authority to advise on planning issues

## The Human Rights Act 1998

This Act is described as "An Act to give further effect to rights and freedoms guaranteed under the European Convention on Human Rights."

Wherever the Human Rights Act 1998 (which in essence requires any public body to carry out its functions so as to accord with the Convention) applies to a situation which involves an unauthorised encampment, the relevant public authority when dealing with the encampment must comply with the Act.

In considering action to recover land, local authorities may need to take a balanced approach and also ensure that they have given consideration to the health, education and housing needs of the Travellers.

Proportionality will be considered to ensure that there is a balance between the needs of the settled community and the Travellers.

## The Race Relations Act 1975 and the Race Relations (Amendment) Act 2000

Under the Race Relations Act, it is unlawful to discriminate against anyone on the grounds of race, colour, nationality (including citizenship), or ethnic or national origin. All racial groups, including Gypsies and Travellers, are protected from discrimination.

The Race Relations (Amendment) Act 2000 placed both a general and specific duty on public authorities bound by the Act. Under the general duty the requirement is to:

- eliminate unlawful racial discrimination
- promote equality of opportunity
- promote good relations between persons of different racial groups.

The specific duty under the Act requires public authorities to produce and publish a Race Equality Scheme to show how they intend to meet the requirements under the general duty.

### Other Equalities Legislation

More recently, legislation has come into force covering age, gender, disability, religious belief and sexual orientation. Many public authorities are producing a single equality scheme outlining what they plan to do to ensure equality, diversity and equity in employment and service delivery.

### Statutory Responsibilities

Local authorities have statutory duties in so far as provision of education, housing and social services is concerned. Gypsies and Travellers, like the settled community, have a right to access health provision. Health Services have a Duty of Care towards Gypsies and Travellers. The priorities when visiting an encampment are to assess the health needs of Gypsies and Travellers and to provide access to such services as are appropriate and are required.

### Confidentiality

In dealing with unauthorised encampments, all personal information will be treated as confidential between agencies, in line with normal working practices and procedures.

However, it must be remembered that occasionally the public interest and the statutory duties of agencies can override the duty of confidentiality.

In the operation of this protocol information may be shared between responsible authorities in line with the principles of the Derbyshire Partnership Forum Information Sharing Protocol. In addition, information communicated to public authorities may be disclosed to the public under the Freedom of Information Act 2000.

At no time should agencies, employees or members of the Gypsy and Traveller community be offered anonymity for information they wish to share with the agency, where this cannot be provided in law.

### **Principles to be followed**

Set out below are the general principles to be followed in response to unauthorised Gypsy and Traveller encampments. These have been agreed by member authorities of the Derbyshire Traveller Issues Working Group.



These agencies recognise that everyone in the community has rights and their dignity should be respected. As part of the community, Gypsies and Travellers should be treated with the same respect as the settled community.

When a relevant authority seeks to gain re-possession of land, it should - if possible - make contact with Derbyshire Gypsy Liaison Group so that there are lines of communication and to explore any opportunity for negotiation and discussion which may lead to solutions before evictions take place.

Where a report about an unauthorised encampment on public land reaches a public authority, this authority will find out which authority is the key authority with power to recover possession.

The key authority will then consult other relevant agencies concerning the authorised encampment as appears appropriate, for example the NHS. The existence of a camp and awareness of it by any agency will not necessarily lead to eviction.

The key authority will liaise with the NHS and the relevant departments at Derbyshire County Council or Derby City Council which deal with the education of children (where any persons under the age of 16 are believed to be present) to find out if there any urgent needs to be considered before any further action is taken. If any potential social care needs are identified by either health or educational staff they should inform the relevant department dealing with social care issues at either council. The relevant department will then, if necessary, arrange visits to offer any advice or guidance.

The key authority will contact the relevant housing authority to inform them of the unauthorised encampment and to ask whether it is dealing with any relevant requests relating to accommodation needs.

As part of responding to an unauthorised encampment, visiting officers will identify needs and how they are being addressed and state how many days will be needed to address these needs. The key authority should delay, wherever possible, further action until informed that stated needs have been addressed.

## **Police and their powers**

Before invoking their powers to evict the Police will ensure visits have been made by the appropriate services unless immediate action is required e.g. in serious incidents or to prevent a serious incident. Derbyshire Police recognise the constitutional freedom of individuals to follow their traditional or chosen lifestyle. Police Powers under section 61 and Section 62A of the Criminal Justice and Public Order Act 1994 will not be used as a matter of routine. Each case will be looked at on its merits having regard to the safety of the settled community and taking into consideration any aggravating factors of crime or disorder. The Police will follow guidance within their own standing orders.

## **Anti Social Behaviour**

Where Gypsies or Travellers are engaging in anti social behaviour causing alarm, distress or harassment to others the Local Authority can apply for Anti Social Behaviour Orders (ASBOs) under the Crime and Disorder Act 1998. A Local Authority will complete

a thorough investigation in consultation with other partnership agencies in order to determine if this is the appropriate action.

ASBOs are used to prohibit perpetrators from continuing to do specified anti-social acts or entering defined locations, in order to protect the public in those areas. Gypsies and Travellers will be treated as everyone else residing in the area and an ASBO would only be sought if their actions constitute anti social behaviour, not because their choice of lifestyle caused someone annoyance.

ASBOs are civil remedies and are made in civil proceedings. They can be issued as a stand-alone application or on conviction of a criminal offence. An order lasts for a minimum of two years, but can in some circumstances run indefinitely.

ASBOs often include a prohibition that states it operates in the whole of England and Wales. This means that the order “follows” the perpetrator wherever they may reside.

Breaching the terms of an ASBO without reasonable excuse is a criminal offence and usually prosecuted by the Crown Prosecution Service. Breach of an ASBO can result in a fine of up to £5000 and up to 5 years imprisonment for an adult, 2 years for a juvenile.

### **Regaining possession of local authority land**

Where there is an unauthorised encampment on local authority land or on the highway, the local authority with an interest in the land may bring action in the County Court under the Civil Procedure Rules or the Magistrate’s Court under the Criminal Justice and Public Order Act 1994.

This legal process allows for the serving of notices to the unauthorised occupiers, who may wish to challenge the action.

At all stages of the process, the local authority should, where Gypsies or Travellers are on site - and where it is practical - give a verbal message to them as well as a written notice.

Where the local authority is taking any action under the Civil Procedure Rules or in the Magistrate’s Court, the procedural steps outlined above should ensure that the local authority does not unwittingly act outside statutory or humanitarian considerations but exercises its discretionary powers in accordance with established public law principles.

Consideration may be given to delaying legal proceedings if a date can be agreed for the Gypsies or Travellers to move.

In this case consideration may be given to the provision of basic amenities, i.e. water supply, mobile toilets and refuse collection. This would only be the case when all concerned are fully aware of what is expected of them and that this would be a temporary measure. The provision of these amenities would mean less disturbance and nuisance to the settled community while an unauthorised encampment remains. It may also prevent the extra strain sometimes placed on local services and the provision of refuse collection would also go some way to recovery of the land once the Travellers

have moved on. Considerations of efficiency should be taken into account, where costs of providing these amenities would reduce the overall cost of the eviction process.

Each case will be looked at on its own merits and a decision will be reached having regard to the needs of the Gypsies or Travellers and the settled community, and issues of efficiency.

<b>Document Control Information</b>	
Document Owner	Derbyshire Travellers Issues Working Group
Document Author	Derbyshire Travellers Issues Working Group
Document Reviewer	Chair of Derbyshire Travellers Issues Working Group
Date of Document	July 2007
Version	1.0
Document Classification	Public
Document Retention Date	Until document review date
Review Date of Document	July 2009

z

<b>Document History</b>			
<b>Version</b>	<b>Date</b>	<b>Author</b>	<b>Comments</b>