



North Derbyshire Clinical Commissioning Group

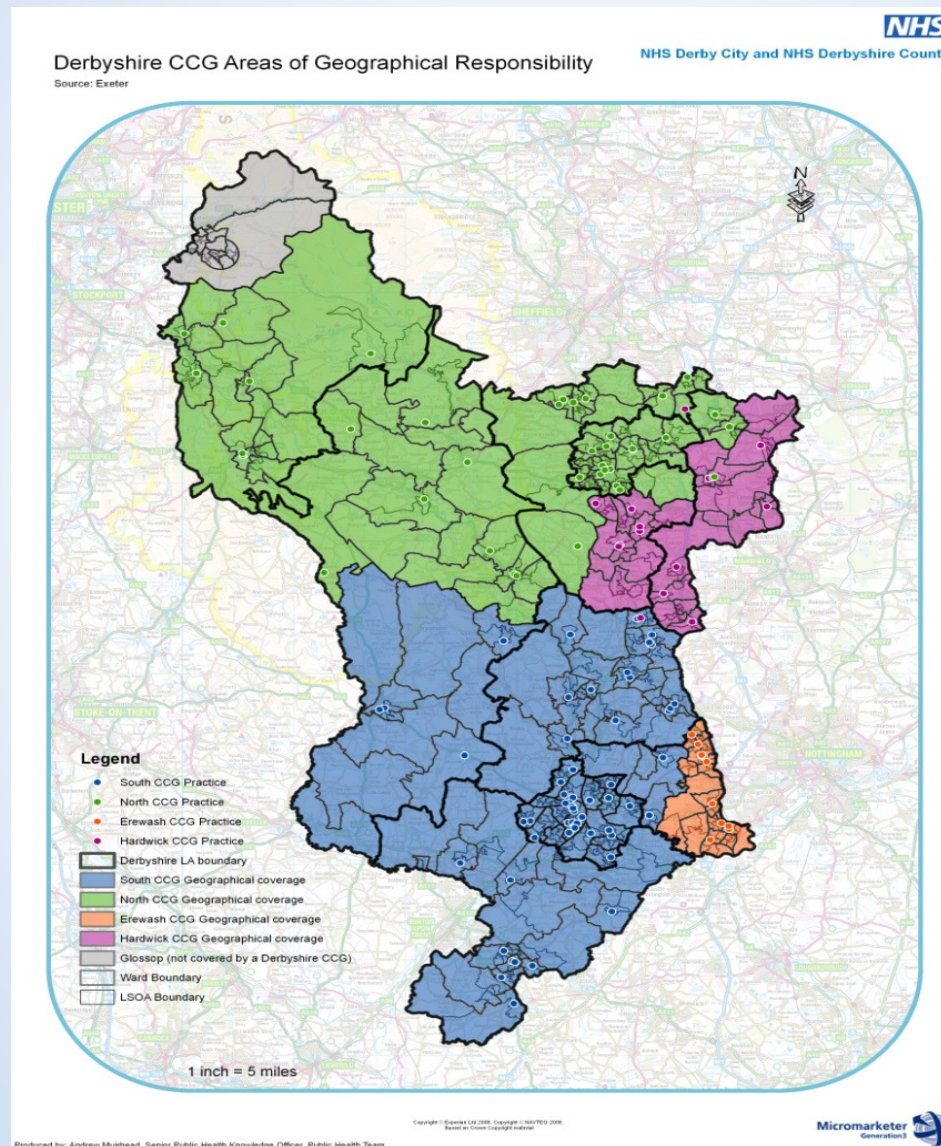
The New NHS in Derbyshire

**Jackie Pendleton, Chief Officer
NHS North Derbyshire CCG**

Clinical Commissioning Groups in Derbyshire

- NHS Erewash CCG
- NHS Hardwick CCG
- NHS North Derbyshire CCG
- NHS Southern Derbyshire CCG
- NHS Tameside and Glossop CCG

North Derbyshire Clinical Commissioning Group



Authorisation

- 119 criteria to demonstrate competence
- Evidence submission followed by site visit
- Four waves
- 4 CCGs Authorised; Hardwick next month
- But don't take on full statutory functions until April 2013

What are CCGs responsible for?

For patients registered with our member practices:

- Community health services
- Maternity services
- Elective hospital care
- Rehabilitation services
- Continuing healthcare
- Abortion services
- Infertility services
- Wheelchair services
- Home oxygen services
- Older people's healthcare services
- Healthcare services for children
- Healthcare services for people with mental health conditions
- Urgent and emergency care (including A&E ambulance and out of hours services)
- Healthcare services for people with learning disabilities
- Treatment of infectious diseases

For people present in our geographical area:

- Emergency and urgent care, including ambulance and out-of-hours services

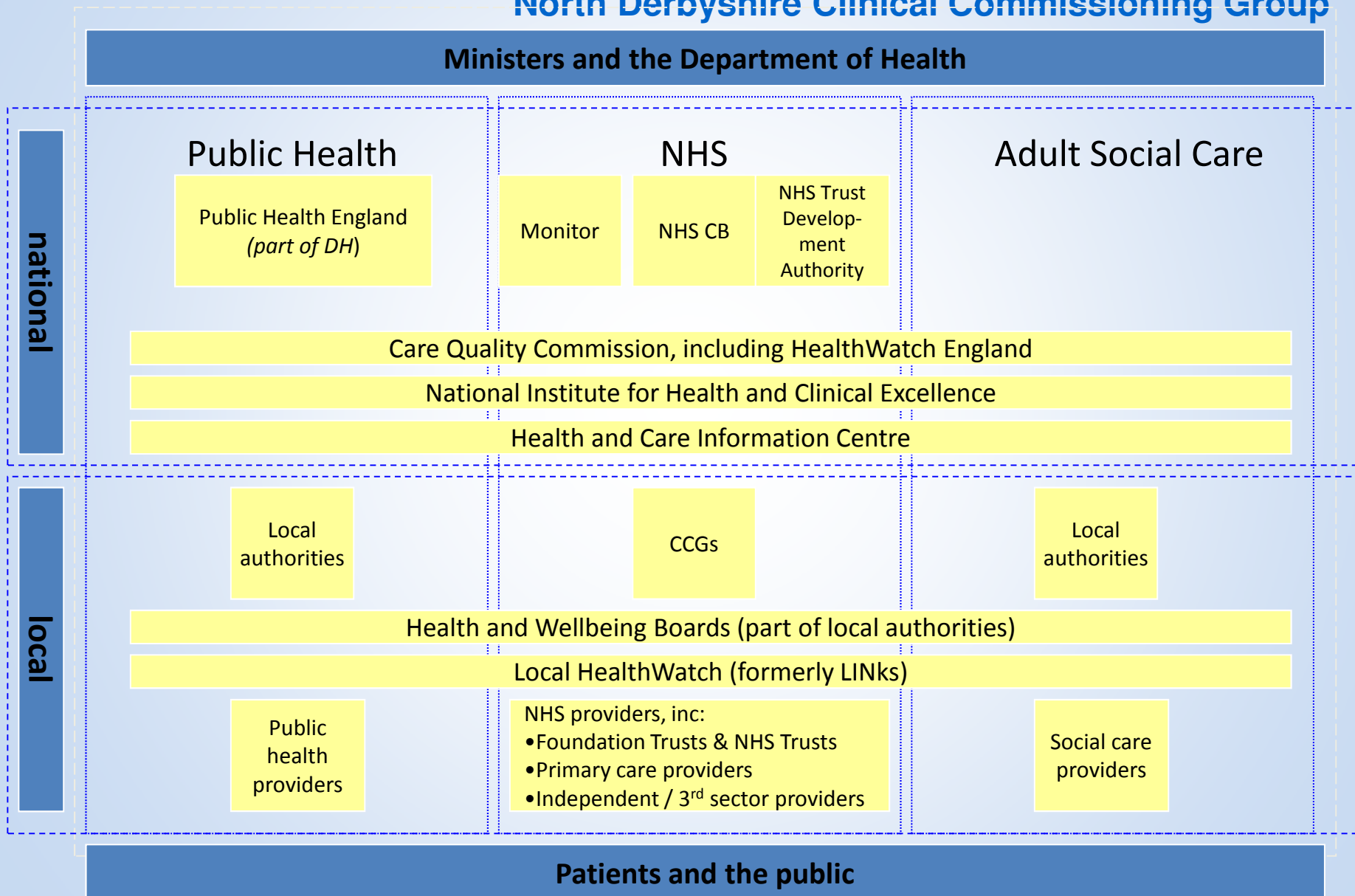
What Aren't CCGs Responsible For?

- Public health – Derbyshire County Council
- Primary care contracting – NHS CB
- Offender and military health – NHS CB
- Specialised Commissioning – Lincs and Leicestershire NHS CB Area Team
- Commissioning support – GEM and others

Overview of health and social care structures from April 2013



North Derbyshire Clinical Commissioning Group



Collaboration amongst CCGs

- Lead commissioning roles:
 - Chesterfield Royal - North Derbyshire CCG
 - Sheffield – Hardwick CCG
 - Derbyshire Community Health Services – North Derbyshire CCG
 - Royal Derby – Southern Derbyshire CCG
 - Derbyshire Healthcare – Hardwick CCG
 - DHU/111 – North Derbyshire
 - EM Ambulance Service – Erewash CCG
 - Tameside Hospital – Tameside and Glossop CCG
- All with clinical and patient involvement

What's Really Important Though

- 21st Century health and social care – integrated working between all sectors for complex care – more on this later!
- Improving patient experience of primary care
- Reducing unwarranted clinical variation
- Clinically led pathway development e.g. Hips and Knees; ophthalmology, heart failure and respiratory disease
- Value for money and managing rising demands together

CCGs and Stakeholder Engagement

For example in North Derbyshire CCG:

- Three years' funding to GP practices to develop Patient Participation groups (PPGs)
- Voluntary and community sectors, LINK/HealthWatch, PPGs and other key partners form stakeholder forum
- Forum has direct link to Governing Body through appointed Lay Representative
- Manage the relationship between those agencies we commission from but also wish to work in partnership with



Shire Clinical Commissioning Group

