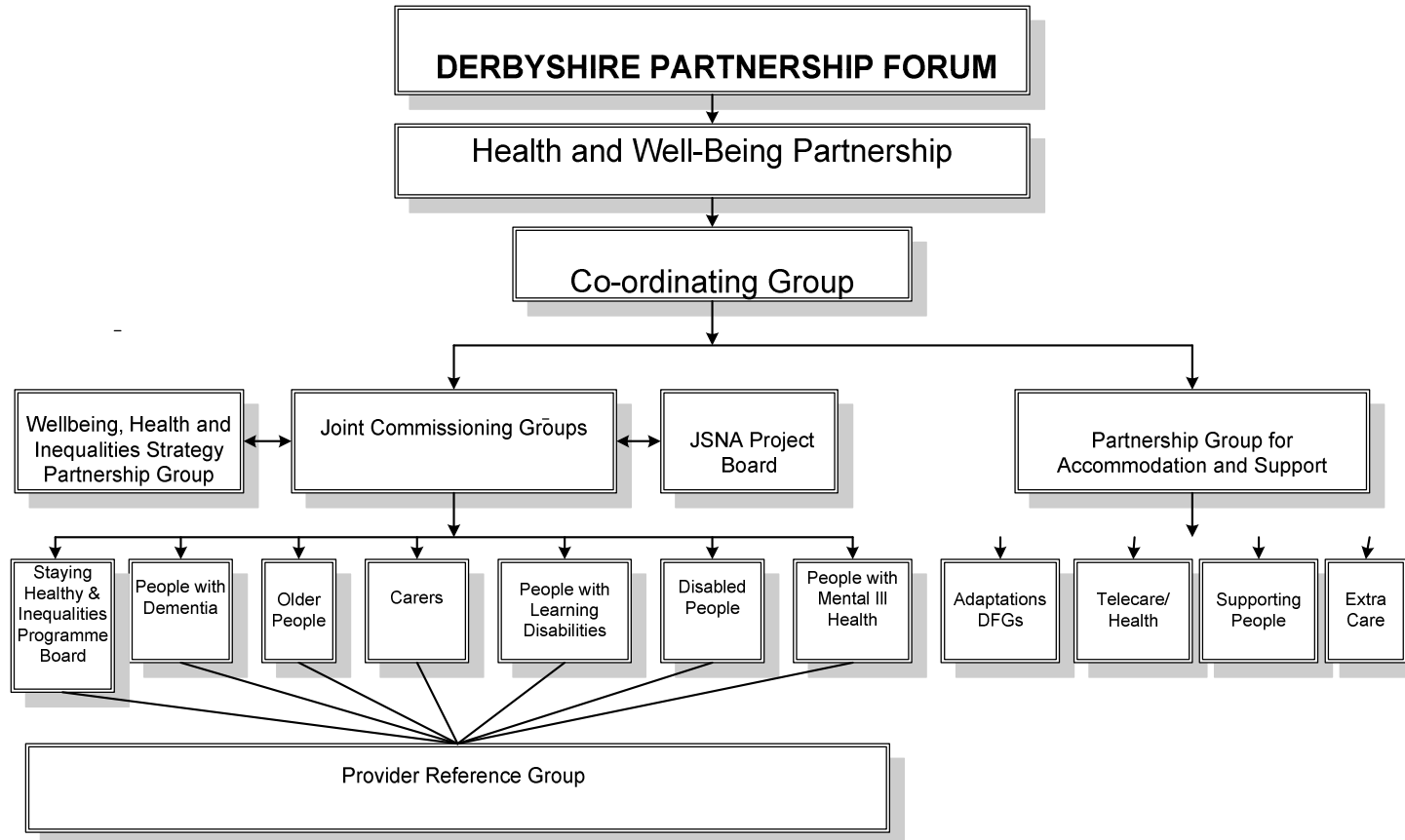
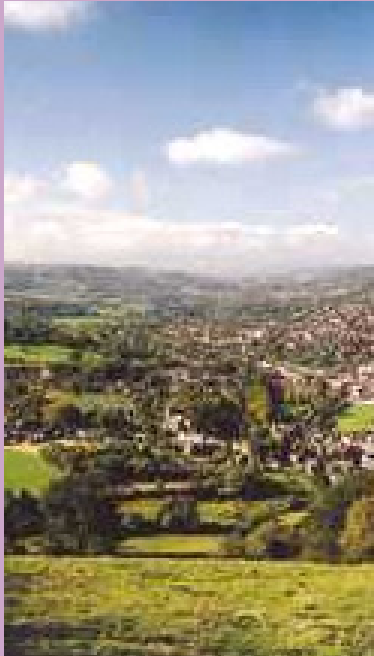


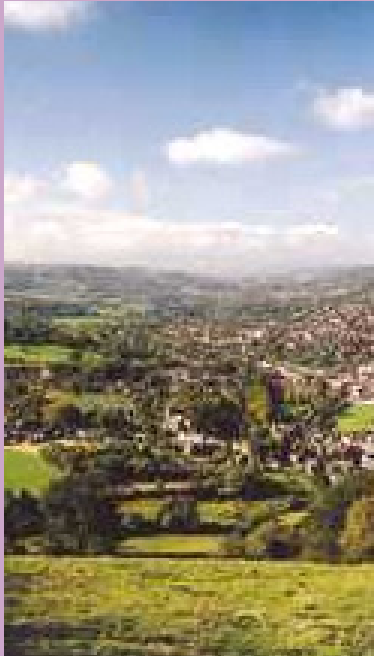
# Previous Joint Commissioning Structure





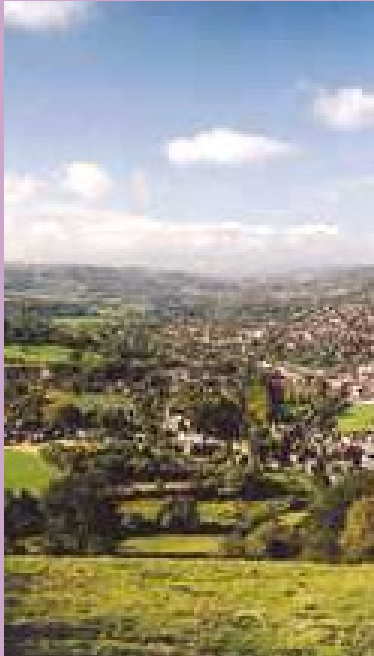
# Joint Commissioning Priorities

- **Older People**
  - Information
  - Improved pathways including hospital discharge/avoidable admissions
  - Specialist care for people with dementia
  - Choice and flexibility in day services
- **People with Learning Disabilities**
  - Health action plans
  - Person centred plans
  - Housing
  - Day opportunities including employment



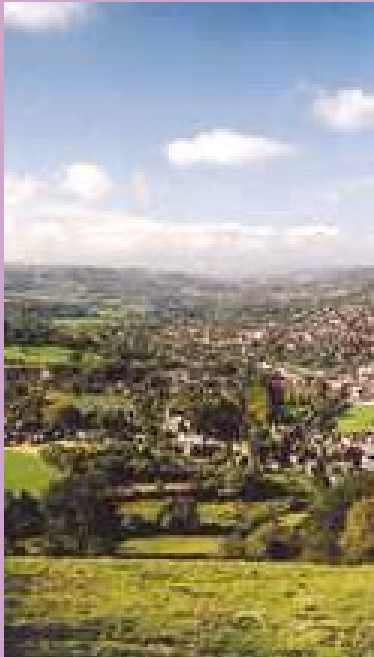
# Joint Commissioning Priorities cont.....

- Carers
  - Respite breaks
  - Information
- Disabled People
  - Access to health care
  - Transport
  - Accessible housing
- Over Arching
  - Evidence based investment
  - Efficiencies



# Joint Achievements (Examples)

- Joint Strategic Needs Assessment
- Benefits Advice
- Information for Public
- Prevention Services e.g. Handyvan
- Integrated Teams
  - Mental Health
  - Learning Disabilities



# Joint Achievements (Examples cont.....)

- Intermediate Care/Re-ablement
- Dementia and Stroke Care Pathways
- Improving Quality in Care Homes
- Safeguarding Vulnerable Adults



# Health and Wellbeing: Latest Performance LAA Overall

Health and Wellbeing: Latest Performance LAA Overall

Indicator	Target status	Direction of Performance	Quartile Position	Quartile Movement
End of life access to palliative care enabling people to die at home (NI 129)	21% of people who died choose to at home v 19.7% the year before	↑	n/a	n/a
Carers receiving needs assessment or review and a specific carer's service, or advice and information (NI 135)	33% of carers v 22% last year	↑	Top	↑
All age all cause mortality rate females (NI 120a)	452 per 100,000 population died v 468 last year	↑	Mid	↔
All age all cause mortality rate males (NI 120b)	641 per 100,000 population died v 691 last year	↑	Mid	↔
All age all cause mortality rate females Bolsover	520 per 100,000 population died v 590 last year	↑	n/a	
All age all cause mortality rate males Bolsover	715 per 100,000 died v 767 last year	↑		
Adults with learning disabilities (LD) in employment (NI 146)	66 adults with LD v 38 last year	↑	Bottom	↔
% of vulnerable people who are supported to maintain independent living (NI 142)	99.3% of vulnerable people v 99% last year	↑	Top	↑
Social care clients receiving Self Directed Support (NI 130)	12.7% of clients v 4.9% last year	↑	Bottom	↔

