



The Derbyshire Partnership Forum
c/o Derbyshire County Council
County Hall
Matlock DE4 3AG

Telephone: +44 (0)1629 580000

16 May 2011

Dear Derbyshire Partnership Forum Member,

DERBYSHIRE PARTNERSHIP FORUM

The next meeting of the Derbyshire Partnership Forum (DPF) is to be held from **10.00am on Friday 20 May 2011 at County Hall, Matlock**. Refreshments will be available prior to the meeting and a buffet lunch will be provided in Committee Room 3 following the meeting.

Please find attached the full agenda and papers for the meeting including the minutes and action points from the previous meeting. The latest minutes of the Thematic Partnerships are attached as a separate document.

If you have any queries or require additional information, please do not hesitate to contact Cath Walker on 01629 538359 or cath.walker@derbyshire.gov.uk.

Please confirm whether or not you can attend by return of email to Andrea Bond andrea.bond@derbyshire.gov.uk. Please indicate any access or dietary requirements.

DERBYSHIRE PARTNERSHIP FORUM (DPF)

20 May 2011

Agenda

1. Welcome and apologies
2. Minutes of the last meeting and matters arising
3. Minutes of the DPF Thematic Partnerships (in a separate document)
4. Derbyshire Partnership Forum - Governance
 - a. Derbyshire Partnership Forum Governance Arrangements – Nick Hodgson
 - b. Public Health and the Health and Wellbeing Board – Bruce Laurence
5. Derbyshire Partnership Forum – Priorities Moving Forward – Nick Hodgson
6. English Indices of Deprivation 2010 – Nick Hodgson
7. Getting Britain Working initiative - Bob Kendall Job Centre Plus
8. Youth Engagement Scheme – Bex Sims Derbyshire Fire & Rescue Service
9. Any other business
10. Date of next meeting

NOTES of the **DERBYSHIRE PARTNERSHIP FORUM** held on 10th December 2010 at County Hall, Matlock.

PRESENT

Councillor A Lewer
(in the Chair)

<p>Amber Valley Borough Council Councillor S Bradford (also representing DCC)</p> <p>Amber Valley CVS L Allison</p> <p>Bolsover District Council W Lumley</p> <p>CHART LSP S Lee</p> <p>Chesterfield Borough Council H Bowen Councillor R Russell</p> <p>Chesterfield Royal Hospital J Birkin</p> <p>Churches together in Derbyshire R Jordan</p> <p>Derbyshire and Nottinghamshire Chamber of Commerce G Cowcher</p> <p>Derbyshire Constabulary D Collins (Asst. Chief Constable) B McKeown (Chief Inspector)</p> <p>Derbyshire County Council Councillor J Allsop Councillor J Harrison Councillor C Hart Councillor C Jones Councillor B Lewis S Burkinshaw</p>	<p>Derbyshire County Council continued... S Eaton R Gent S Goodwin D Lowe J Matthews M Molloy L Ottosen I Stephenson M Whelan J Wildgoose</p> <p>Derbyshire Dales District Council Councillor L Rose</p> <p>Derbyshire Fire and Rescue J Amos</p> <p>Derbyshire Police Authority P Hickson H Veigas</p> <p>Environment Agency S Quinlan</p> <p>Erewash Borough Council Councillor C Corbett J Jaroszek</p> <p>Erewash CVS P Edwards</p> <p>Heanor 50+ and DOPAG J Illingworth</p> <p>High Peak Borough Council Councillor E Thrane</p>
---	---

<p>High Peak CAB and Advice Derbyshire S Minter</p> <p>NHS Derbyshire County Dr D Black I Forrest</p> <p>NHS Tameside and Glossop P Watt</p> <p>North East Derbyshire CAB P Morris</p>	<p>Skills Funding Agency C Collins</p> <p>South Derbyshire CVS J Smith</p> <p>South Derbyshire District Council F McArdle Councillor R Wheeler</p> <p>Third Sector Support for Derbyshire (3D) K Fletcher</p>
--	---

Richard Davies from Marches Energy Agency attended for minute reference 44/10.

Jonathon Douglas from the National Literacy Trust attended for minute reference 48/10.

Apologies for absence were submitted on behalf of J Acred (Derby Hospitals), S Battlemuch (GOEM), B Buckley (DCC), B Dunks (Derbyshire Older Peoples Advisory Group), M Creedon (Chief Constable), S Frayne (Chief Fire Officer), S Green (Rural Action Derbyshire), H Hastie (Connexions), J Herbert (Derbyshire Dales and High Peak LSP), W Jones (Derbyshire Health United), D Joy (Derbyshire Sport), B Kendall (Jobcentre Plus), C Lawton (Links CVS), J McArthur (Chesterfield College), J McElvaney (DCC), E Michel (NHS Tameside and Glossop), N Moulden (Derbyshire Dales CVS), C Puddephatt (NFU), B Robertson (DCC), M Rowe (Big Lottery Fund), D Sharp (Derbyshire County PCT), B Smithurst (Derbyshire Economic Partnership), Councillor S Spencer (DCC), Bishop Humphrey Southern (Churches together in Derbyshire), M Taylor (CHART LSP), A Thomas (DCC), L Wallace (Community and Voluntary Partners – Bolsover), T Whittaker (Derbyshire Older Peoples Advisory Group) and B Wood (Derbyshire Association of Local Councils).

42/10 **MINUTES OF THE PREVIOUS MEETING AND MATTERS ARISING** The minutes of the previous meeting held on 24th September 2010 were confirmed as a correct record. There were no matters arising.

43/10 **MINUTES OF THE DPF THEMATIC PARTNERSHIPS** The minutes of the following DPF Thematic Partnerships were received:-

- Culture Board – 29th September 2010;
- Health and Wellbeing Partnership – 20th September 2010.

The minutes of the following Board's were circulated at the meeting:-

- Children and Young People's Trust Board – 18th November 2010;
- Health and Wellbeing Partnership – 22nd November 2010;
- Safer Communities Board – 17th November 2010.

It was noted that the minutes from the last meeting of the Sustainable Communities Board which had taken place on 2nd December 2010 would be published on the DCC website when available. The next meeting of the Transformational Management Board would take place on 24th January 2011.

44/10 **CLIMATE CHANGE MITIGATION IN DERBYSHIRE** Richard Davies, Local Improvement Adviser from Marches Energy Agency delivered a presentation on Climate Change Mitigation in Derbyshire.

During his presentation Richard referred to “the energy tri-lemma” (affordability, reliability and low carbon), Derbyshire's current position including the “bright spots” and areas where more progress could be made and he gave details of an action plan which could be used to address issues of concern for Derbyshire. The presentation was detailed and very informative and addressed real issues of concern in relation to the climate change mitigation and implications for Derbyshire.

Further information on this matter could be obtained by contacting Richard on 01743 277100/07941 155538 or e mail richard@mea.org.uk

Ian Stephenson, Director of Environmental Services for Derbyshire County Council updated the Forum in relation to work which had been undertaken by the Sustainable Communities Board. The work undertaken so far had proved to be very innovative and Derbyshire had already achieved significant carbon reductions. He stressed to partners the requirement for this type of work to be prioritised and offered to share information with them should they require it. He promoted two half-day workshops which would take place in the New Year on 27th January and 10th February with the possibility of a third one on the 25th February should demand require it. Information in respect of these workshops would be circulated to partners shortly.

Pete Edwards (Erewash CVS) confirmed that some partners were already making significant process, and he referred to the increased buying power if all partners joined together which could reduce costs, such as energy tariffs etc. He also referred to Derbyshire's land acquirement and investigating opportunities for improved utilisation in order to achieve savings. In response Ian Stephenson agreed to investigate both of the issues Peter raised.

The Forum was supportive of this initiative and its promotion was supported as there was the potential for the achievement of huge efficiencies.

RESOLVED (1) to note the contents of the presentation;

(2) that Richard be thanked for his attendance and presentation.

45/10 **COMMUNITY COHESION** Partners considered a report which gave an update on work being undertaken by the Derbyshire Partnership Forums (DPF) Community Cohesion Working Group in relation to strengthening community cohesion in Derbyshire.

The DPF Community Cohesion Working Group had been formed in December 2008 to tackle the issue and the group's key purpose was to improve partners' understanding of cohesion in Derbyshire, develop a shared vision and strategic direction and deliver actions to build cohesion in local communities. Priorities of the working group had been identified which had informed the formulation of a Community Cohesion Strategy and Action Plan for Derbyshire. The group was also looking at the links between the community cohesion agenda and recent central government proposals as many of the actions undertaken under the "Bringing People Together" banner supported the key principles which had been outlined in the proposals for the Big Society. The Bringing People Together Strategy had been approved at the March meeting (minute 11/10 refers) and since then the Working Group had met on a quarterly basis to implement actions outlined in the Strategy. Key achievements over the last year were detailed in the report.

The Working Group would continue to raise awareness of cohesion and continue to implement the actions which had been identified within the Community Cohesion Strategy and Action Plan. It would also be looking at opportunities for possible joint areas of work which could be taken forward in the near future along with ensuring that there was no duplication of both resource and effort across partner organisations.

RESOLVED (1) to note the progress made on the implementation of the Derbyshire Community Cohesion Strategy and Action Plan;

(2) that partners continue to undertake activities to promote community cohesion within their own organisations making use of joint resources wherever possible;

(3) that further work to ensure linkages between the community cohesion agenda and proposals for the Big Society be undertaken by the Community Cohesion Working Group.

46/10 **GOVERNANCE ARRANGEMENTS FOR THE DERBYSHIRE PARTNERSHIP FORUM** Partners gave consideration to a report which informed them of findings from the recent consultation exercise which had been undertaken in relation to future governance arrangements of the Forum. It also gave details of outline proposals for a revision of the current structures.

The report indicated that partners had been asked to consider and provide views on the future working of the Derbyshire Partnership Forum, the thematic partnerships and the need for high level priority and target setting. Around 30

responses had been received from partners which had been analysed and the following key points had emerged:-

- there is wide support for partnership working and the Derbyshire Partnership Forum, however, partners felt that meetings should take place less frequently and the format should be revised;
- respondents agreed that there is a need to review the existing thematic partnerships to ensure that they are fit for purpose moving forward. There is little support to continue with all six thematic partnerships in their current form;
- the statutory requirement of the Health and Wellbeing Board, the Children's Trust and the Safer Communities Board had been recognised by partners and there was wide support and recognition of the work these boards had undertaken;
- there was support for a review of the remaining three thematic partnerships and other sub groups to ensure that these match the partnership's priorities and provide added value; and
- responses indicated wide support for high level priorities with a reduced number of targets than were currently reflected in the Derbyshire LAA.

A further issue which had emerged from the consultation process was the need to ensure that resources are used wisely and in the most efficient way to deliver key priorities. As such, the membership of partnerships would need to comprise of partners who are able to contribute directly to the delivery of priorities. Currently a wide range of partnerships and sub-groups exist which deal with single issues which could place pressure on individual organisations in ensuring attendance at meetings and working groups. It was therefore recommended that the Partnership should consider the use of task and finish groups where appropriate.

The report summarised the following proposals for new arrangements :-

- review and revise the terms of reference for the Derbyshire Partnership Forum to include the consideration of reducing the number of meetings in any one year;
- replace the current two tier decision making structure which involves a Board and an Executive with an "Executive Board" which would be a single decision making body who's key responsibilities would be to allocate resources, set targets and oversee performance;
- the Children's Trust, Health and Wellbeing Partnership and the Safer Communities Board should remain reflecting the statutory nature of their work, however governance arrangements should ensure that their work reflects the new statutory requirements moving forward;
- the remaining thematic partnerships should each review their purpose in light of the new government proposals bearing in mind that future

structures would need to demonstrate added value and a link to strategic partnership priorities;

- all thematic partnerships should review and revise their terms of reference as and where appropriate with consideration being given to the utilisation of time limited task and finish groups for single issues;
- work should commence to integrate the Derbyshire Economic Partnership (DEP) into the governance structures for the Derbyshire Partnership Forum to facilitate and co ordinate economic development and regeneration work across the county which would maintain links with the newly created Local Economic Partnership (LEP) for Derby and Derbyshire, Nottingham and Nottinghamshire.

The report indicated that as the partnership priorities were currently set out in the Sustainable Community Strategy, any new partnership arrangements should support their delivery beyond the end of March 2011. Partners would be consulted shortly on a reduced number of high level indicators and targets to support the delivery of priorities from April 2011 onwards.

It was reported that detailed governance, terms of reference and constitutional arrangements for the Forum and its associated structures would be developed over the forthcoming months and implemented from April 2011. Lead Accountable Officers for each of the partnerships would be responsible for carrying out the review and presenting proposals for revised arrangements to the Executive Board for approval. Further reports on progress made and detailed proposals on future governance would be presented to the March 2011 meeting of the Forum.

RESOLVED that (1) outline proposals to manage partnership work from March 2011 onwards be agreed;

(2) further work on the development of thematic structures be led by Lead Accountable Officers and proposals be approved by the Executive Board; and

(3) a report which outlines detailed structures, terms of reference and constitutional arrangements be presented to the next meeting for consideration and formal ratification.

47/10 DERBYSHIRE LOCAL AREA AGREEMENT UPDATE ON PERFORMANCE The Forum considered a report which gave details on the progress made towards the achievement of targets within the Derbyshire Local Area Agreement 2008/11 (LAA) as at the end of Quarter 2 for 2010/11.

Reference was made to the fact that the Secretary of State for Communities and Local Government had “revoked all designations of local improvement targets in Local Area Agreements”. This meant that the partnership could amend or disregard any targets in the 2008-2011 Agreement without government approval.

The government would not monitor performance on any targets that the partnership chooses to retain which meant that there would be no payments of Performance Reward Grant linked to the current LAA. It was reported that work to review priorities and to determine how success should be measured for the future would take place with partners over the next few months. Any proposed changes would be brought back to the next Forum meeting in March 2011.

With reference to current performance, the report indicated that 22 indicators had met or exceeded the target, 10 indicators were within 5% of achieving the target and 18 indicators were 5.1% or more away from achieving the target. The report compared performance between the latest position and its equivalent in the previous year. 38 indicators had performed better, 9 indicators had performed worse and 3 indicators had remained the same. Full details of the indicators performance, details of key exceptions and overall LAA performance by the Thematic Board had been provided separately in the appendices to the report.

Finally, the report indicated that overall there had been a positive direction of progress in respect of LAA performance as there had been an increase in the percentage of indicators showing improved performance compared with the same period in the previous year.

RESOLVED (1) to note the current performance on LAA indicators;

(2) that a report on the priorities, indicators and targets to be used by the partnership to measure progress and success be presented to the next meeting of the Forum.

48/10 **PARTNERS IN LITERACY** Jonathan Douglas, Director of National Literacy and Sarah Burkinshaw of Derbyshire County council attended the meeting to deliver a presentation on Changing lives through literacy.

The presentation referred to the benefits of literacy and how it could impact on life and society. It stressed the effects poor literacy could have on individuals and how this could affect life, individuals potential and opportunities in later life. This also had an impact on society as a whole and also affected different partner organisations and the services they deliver.

The presentation was very informative and was well received by partners. The Chair thanked Jonathan and Sarah for their attendance and presentation.

49/10 **DERBYSHIRE EDUCATION BUSINESS PARTNERSHIP ANNUAL REPORT** The Forum received the Derbyshire Education Business Partnership Annual Report for 2009/10.

50/10 **ANY OTHER BUSINESS** The following items were raised under Any Other Business:-

(a) Public Health Developments David Black, the Director of Public Health gave an update in relation to the white paper "Healthy Life Healthy People". The main purpose of this paper would be to improve health for local people and there would many significant changes in the forthcoming years. One of the most significant changes would be the relocation of responsibility for Public Health to Local Authorities from 2013 which would have significant implications. A full report on this matter would be presented to the next meeting of the Forum, however David agreed to arrange for a summary of the white paper to be circulated with the minutes of this meeting.

(b) Adverse Weather Conditions Ian Stephenson, the Director of Environmental Services for Derbyshire County Council referred to the difficulties which had been experienced county wide as a result of the heavy snow falls. He assured forum members that exactly the same resources had been deployed as usual which included the same teams, same gritting routes and the same equipment. In detail this consisted of 42 gritters, 120 members of staff working around the clock along with additional JCB's and tractors owned by private citizens such as farmers. The North East had been struggling as unusually this area had suffered the heaviest snow falls, however resources had been re directed to these areas as soon as they could. Many problems had been caused by citizens abandoning their vehicles in awkward places on the highway which had blocked roads thus preventing adequate access for snow ploughs. He reported that because of the extreme fall in temperatures, this had caused further difficulties as salt fails to work between -6 to -8 degrees Celsius.

The Chair took the opportunity to thank Ian and his team for the efforts they had made in delivering their service under extreme circumstances.

(c) Government Grant Settlement It was confirmed that an announcement in relation to the Government Grant Settlement would be made on the afternoon of Monday, 13th December, 2010.

51/10 **DATE OF NEXT MEETING** **RESOLVED** that the next meeting be held on Friday 25th March 2011 commencing at 10.00 am at County Hall, Matlock, Derbyshire.

DERBYSHIRE PARTNERSHIP FORUM

20 May 2011

Report of the County Council Chief Executive

**DERBYSHIRE PARTNERSHIP FORUM (DPF) GOVERNANCE
ARRANGEMENTS**

Purpose of the report

To inform partners about progress on the development of revised governance arrangements for the Derbyshire Partnership Forum

Background

Existing governance arrangements were developed and established to support the delivery of the Sustainable Community Strategy for Derbyshire and current structures were finalised and agreed in December 2007. The general direction of travel towards localism, additional freedoms and greater autonomy for local authorities alongside a reduction in the top down performance framework presents an opportunity to review the future role of the Forum in responding to these issues.

During Autumn 2010, partners were asked to consider and provide views on the future working of the partnership, the thematic partnerships and the need for high level priority and target setting. The findings from this consultation were reported to the Derbyshire Partnership Forum at the December 2010 meeting at which some broad principles for developing the governance structures were also agreed.

Information and analysis

Since the December meeting the governance arrangements, as set out at Appendix A, have been developed to reflect issues raised during the consultation process and to address the demands of new and emerging partnership issues. As a result it is therefore proposed that:

- ◆ The main purpose of the Forum which is currently to agree a vision for Derbyshire, discuss concerns and share information, agree common goals and priorities and monitor progress against these should continue.
- ◆ The Derbyshire Partnership Forum should meet twice a year.
- ◆ The current two tier decision making structure involving a Board and Executive should be abolished.
- ◆ The new Health and Wellbeing Board, Safer Communities Board, Culture Derbyshire and Derbyshire Economic Partnership should present reports twice per year to the Derbyshire Partnership Forum on their wider work alongside progress on any relevant Sustainable Community Strategy priorities.

- ◆ The Children's Trust and Adult Care Board should report into the Health and Wellbeing Board. Further details on proposals for the Health and Wellbeing Board are the subject of a separate report to this meeting
- ◆ The remaining partnerships should each review their purpose in light of new government proposals moving forward.
- ◆ All partnerships should review and revise their terms of reference as appropriate and consideration should be given to the use of time limited task groups to deal with single issues in place of standing partnerships and sub groups.

A key role for the Derbyshire Partnership Forum will be to review, monitor and challenge progress against Sustainable Community Strategy priorities and targets. It is intended that a small number of priority issues from the Sustainable Community Strategy are identified for focussed activity. Each of these priorities will be allocated to a Lead Officer who will be responsible for reporting progress to the Forum. Further information on the work being carried out to establish priorities is contained in a separate report to this meeting.

With less meetings and reduced representation on existing partnerships, the issue of communication both across sectors and around wider partnership issues will need to be addressed. Ensuring that information is shared effectively across the partnership will be critical.

Next steps

Further reports on the implementation of the governance arrangements and more detailed proposals on terms of reference for the Forum will be brought to a future meeting of the Forum for formal ratification. Work to ensure that partners have access to key information particularly in respect of cross cutting issues will also be carried out over coming months.

Recommendations

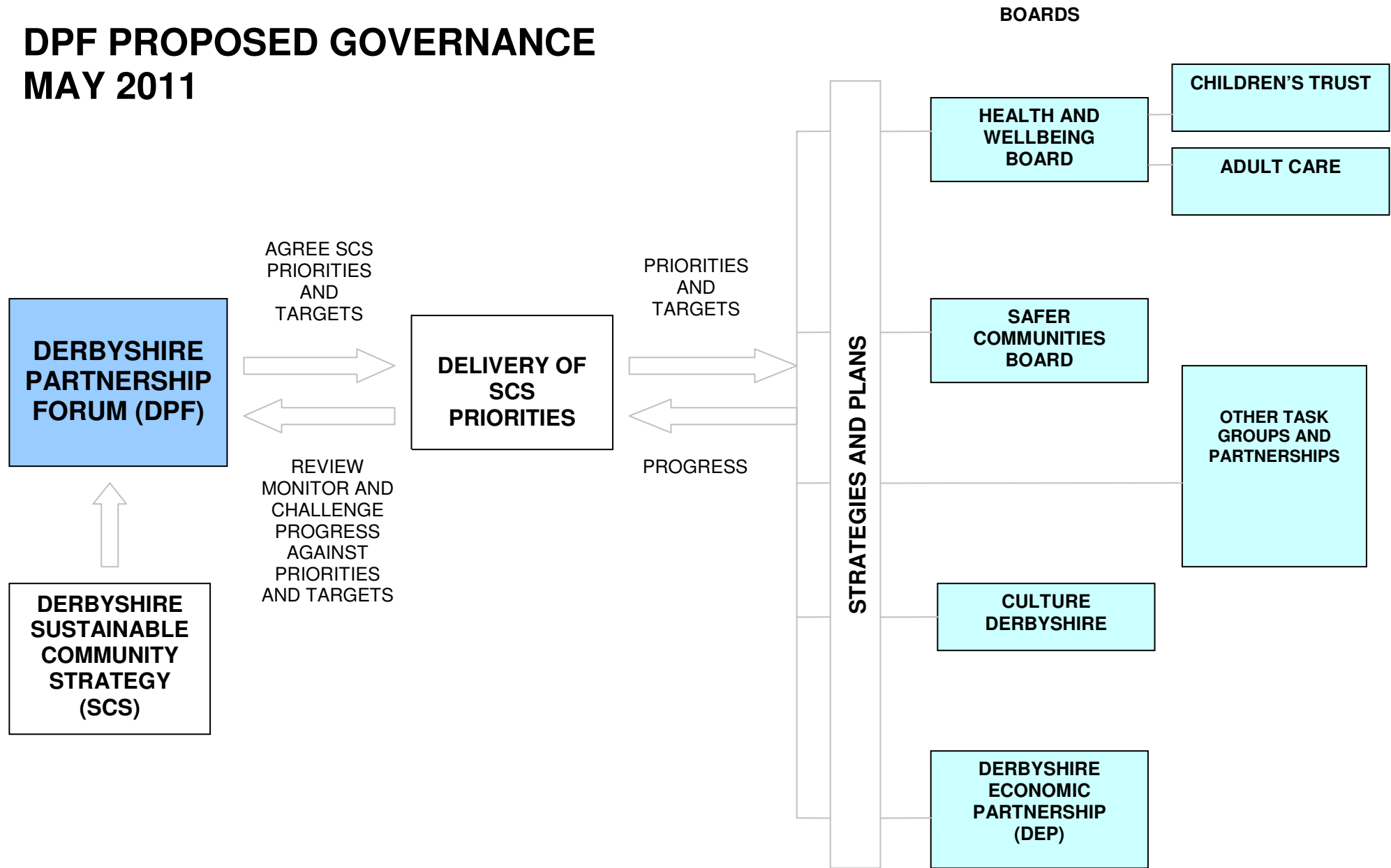
It is recommended that:

1. The proposals to manage partnership work from April 2011 onwards, as set out in this report, are agreed.
2. Further reports on the implementation of the governance arrangements and more detailed proposals on terms of reference for the Derbyshire Partnership Forum will be brought to a future meeting of the Forum for formal ratification.
3. Lead Officers be tasked with developing governance arrangements and terms of reference for the thematic partnerships outlined in the report

**Nick Hodgson
Chief Executive
Derbyshire County Council**

DPF PROPOSED GOVERNANCE MAY 2011

Appendix A



DERBYSHIRE PARTNERSHIP FORUM

20 May 2011

PUBLIC HEALTH AND THE HEALTH AND WELLBEING BOARD

The Public Health White Paper published last year sets out proposals to transfer public health responsibilities to the County Council. These and other changes to the NHS, including proposals for upper-tier authorities to establish a statutory Health and Wellbeing Board in their areas, are set out in the Health and Social Care Bill.

The Health and Social Care Bill has had its Second Reading and completed its committee stage in the House of Commons. The Government is now using the natural break in the passage of the Bill to pause, listen and reflect to improve the plans in relation to the changes to the NHS.

The Chief Executive of the NHS, Sir David Nicholson, has written to stress the importance of pressing ahead with the work to develop local Health and Wellbeing Boards. David Behan, Director General at the Department of Health, has subsequently written to make it clear that Health and Wellbeing Boards “will remain at the heart of the Government’s plans as the engines for integrating services and improving local people’s health”.

Public Health

Public health responsibilities currently undertaken by Strategic Health Authorities and Primary Care Trusts will be divided between a new body, Public Health England and upper-tier local authorities.

The County Council will receive a ring-fenced Public Health Grant from Public Health England from 2013/14. There will be a shadow allocation in April 2012/13 to plan prior to formal introduction. Additionally, a new “payment by results” system (the health premium) is proposed which will reward councils for making progress in improving health outcomes and reducing health inequalities. The County Council will be required to appoint a Director of Public Health, jointly with Public Health England.

The County Council will be the primary commissioner for:

- Drug misuse services – prevention and treatment
- Alcohol misuse services – prevention and treatment
- Physical activity - to address inactivity and other interventions to promote physical activity
- Obesity - local programmes to prevent and address obesity, e.g. delivering the National Child Measurement Programme and commissioning of weight management services

- Community safety and violence prevention and response – domestic violence services in hospital, counselling and support services for sexual violence
- Sexual health services, including Genito-Urinary Medicine (GUM) services provided in acute hospitals
- Accidental injury prevention – local initiatives such as fall prevention
- Seasonal mortality - action to reduce winter deaths
- Public mental health – mental health promotion, mental illness prevention and suicide prevention
- Tobacco control – stop smoking services, prevention activity and enforcement
- NHS Health Check Programme – screening and lifestyle interventions
- Health at work – local action programmes
- Children’s public health 5 -19 years – weighing and measuring of children, medical inspection of school children, school immunisation programmes, such as teenage booster.
- Social exclusion – support for families with multiple problems
- Dental public health
- Fluoridation
- Prevention and early presentation in relation to cancer – lifestyle interventions and awareness campaigns

The commissioning of health visitors will also transfer to the County Council at some point and will be a key responsibility.

There will be joint Public Health England/County Council primary commissioning responsibilities for:

- health intelligence and information (this is a critical component in relation to service planning and the production of the Joint Strategic Needs Assessment and we will need to ensure that arrangements are fit for purpose)
- nutrition (which has clear links to obesity and activity which are council led)
- reducing and preventing birth defects

The County Council will provide a supporting role to Public Health England in relation to infectious diseases and emergency planning and pandemic influenza preparedness.

The opportunities for local flexibility will develop but, there will, for example, need to be some local support for immunisation, vaccination and screening programmes and it is possible that this work will be embedded within the council role.

The County Council has welcomed the opportunity provided by the changes to lead and work with the full range of partners to drive forward local health improvements and to address health inequalities.

Health and Wellbeing Board

The Health and Social Care Bill requires the County Council to establish a statutory Health and Wellbeing Board. The Bill states that the Board is to be treated “as if it were a committee appointed by that authority under section 102 of the Local Government Act 1972”.

The Health and Wellbeing Board will be required to:

- Develop a Joint Health and Wellbeing Strategy based on a Joint Strategic Needs Assessment
- Support joint commissioning of NHS, social care and public health services
- Ensure close working relationships between Public Health England, NHS, local government, Director of Public Health and GP consortia.
- Provide a strategic framework for the detailed commissioning plans for the NHS, social care, public health and other services to best meet health and wellbeing needs.
- Ensure that services and commissioners are maximising their effectiveness on health improvement and reducing inequalities.

The Council has accepted an invitation from the Government to be an “early implementer” for Health and Wellbeing Boards and aims is to establish a “shadow” Board at the earliest opportunity in the current year.

The “shadow” Board will act as an advisory body to the County Council’s Cabinet, NHS Derbyshire Board and the GP Commissioning Consortia. The full Board will be in place from April 2013, subject to the passage of legislation. It will then become a committee of the county council.

The Partnership Forum Workshop received a brief presentation on proposals relating to the Health and Wellbeing Board and the possible composition. The Health and Social Care Bill stipulates a number of statutory members.

The need for the Board to be a small strategic executive was appreciated, subject to mechanisms being in place to engage effectively with all stakeholders. The core membership of the “shadow” Board is likely to be:

- Council Leader (Chair) (*statutory for at least one councillor to be on the board*)
- Cabinet member with responsibility for Public Health
- Cabinet member for Adult Care
- Cabinet member for Children and Young People
- District council (2) (one member one officer)
- Director of Public Health (*statutory*)
- Strategic Director of Adult Care (*statutory*)
- Strategic Director for Children and Young Adults (*statutory*)
- Strategic Director of Policy and Community Safety
- Local Health Watch Representative (*statutory*)

- GP Consortia (5) one from each GP Consortia (*statutory*)
- NHS Commissioning Board (when required)
- Public Health England (subject to local arrangements)
- NHS Derbyshire County (until the PCT is abolished)
- NHS Tameside and Glossop (until the PCT is abolished)

The Board will determine the supporting structures to ensure engagement and influence from a wider range of organisations, including all district and borough councils, providers (including hospitals and the voluntary and community sector), and other stakeholders. The aim will be to ensure that the Board can work with users, patients, providers, commissioners, professional advisors etc in an effective way so that recommendations are well-informed and services are successfully designed and delivered. It will also be important for the Board to agree a developmental programme for its members.

Regular formal reports will be made to the Forum on progress and more informal mechanisms (ie. e-mail and website) will be used to update and involve the wider membership in the work of the Board.

RECOMMENDATIONS

1. To note the current proposals in relation to public health responsibilities;
2. To note the arrangements for the Health and Wellbeing Board.

DERBYSHIRE PARTNERSHIP FORUM

20 May 2011

Report of the County Council Chief Executive

DERBYSHIRE PARTNERSHIP FORUM (DPF) - PRIORITIES MOVING FORWARD

Purpose of the report

To inform partners about the findings from the recent Partnership Forum priority setting workshop and to set out the next steps in developing a new performance framework for the Forum.

Background

Over the last three years partners have played a key role in supporting the delivery of the Sustainable Community Strategy for Derbyshire and the Derbyshire Local Area Agreement 2008-2011. However, the abolition of Local Area Agreements and the National indicator Set has resulted in a shift in emphasis towards greater local freedom to determine performance management arrangements.

This additional freedom and autonomy alongside a reduction in the top down performance framework presents an opportunity for the Forum to review the focus of its activities and to develop a framework that works locally. As part of the consultation on partnership governance arrangements carried out during Autumn 2010, partners were also asked to consider and provide views on the need for high level priority and target setting. The responses indicated wide support for high level priorities supported by a reduced number of agreed targets to concentrate effort and resource.

Information and analysis

The Derbyshire Sustainable Community Strategy 2009 – 14 provides the overarching guiding framework for partnership working in Derbyshire and sets out a shared vision and priorities for joint action. The Community Strategy still has three years to run and many of the issues and priorities contained in the document are still relevant. However a new performance framework for the partnership, to target both effort and resource, is required moving forward.

Partners were invited to attend a workshop in April 2011 to review existing priorities and to identify key issues which still need to be addressed. The findings from the workshop are set out at Appendix A and in particular sections 2 and 3 give a relative sense of partner's priorities for action. The priorities identified begin to provide a direction for the partnership but do not provide a

delivery framework that is useful in providing a clear and tangible focus for delivering outcomes. In particular there is a need to determine some measures to enable progress to be monitored, as well as determining ownership and accountability for progress.

Initial views at the workshop indicated that there was scope to aggregate a number of the identified issues into cross-cutting overarching outcomes. These, alongside underlying measures, would provide the basis of a performance framework for the partnership. Where measures and indicators are used to support high level priorities they will be drawn, where possible from existing data collections such as the Local Government Single Data List or other emerging frameworks such as the Public Health Outcomes Framework. It is also proposed to allocate responsibility for priorities to individual Lead Officers who will be responsible for reporting progress on activities in support of priorities to the Forum twice a year.

Next steps

Work will be undertaken over forthcoming weeks to refine priorities and to further develop the performance framework for the partnership. This will be circulated to partners for agreement in due course.

Recommendations

It is recommended that:

1. The findings and issues identified from the recent workshop are noted
2. Partners agree the approach for further developing priorities and the performance framework for the partnership as set out in the report
3. Further reports on progress be brought to future meetings of the Forum in due course.

**Nick Hodgson
Chief Executive
Derbyshire County Council**

Appendix A

Derbyshire Partnership Forum governance and priority workshop 21 April 2011

Section 1

Key “we wills” by Sustainable Community Strategy theme

Each table was asked to discuss and agree five priority “we wills” for their allocated theme (eight for Sustainable Communities). These are set out below:

Safer Communities	
We will...	Rationale
1. Strengthen pathways to drug and alcohol services	◆ Drug and alcohol abuse underpins a significant element of crime and disorder.
2. Sustain effective prevention and diversionary programmes to tackle ASB	◆ Constantly reflected by our communities as their top priority
3. Identify, support and protect vulnerable people to prevent re-victimisation	◆ This is a new priority that has been added and includes mental health, domestic violence, referral support services
4. Progress integrated offender management (IOM) approach to reduce re-offending	
5. Prioritise and enhance successful programmes which have seen crime fall significantly and improved the safety of local people	◆ This includes successful programmes such as Safer car parks and transport facilities, street lighting improvement, road safety initiatives, home security programmes, home fire safety checks, reducing underage sales of alcohol and tobacco, illegal trading, health and safety, planning for emergencies etc.
Children and Young People	
We will...	Rationale
1. Target children and young families in greatest need for early intervention in order to improve their ability to benefit from education and life chances	<ul style="list-style-type: none"> ◆ Early intervention is vital to improve life chances for all ◆ Better and cheaper to prevent problems arising than to cure problem later ◆ Vital to target resources at those

	most in need particularly as resources are increasingly limited
2. Protect children from abuse, neglect and bullying	◆ Bullying is the worst thing that can ever happen to anyone
3. Increase the level of participation for all young people in a range of positive activities including sport, recreational, outdoors, music, volunteering, arts, creative and community safety activities	◆ Lack of participation contributes to obesity ◆ Participation will improve health ◆ Contributes to all 5 priorities identified
4. Provide advice and support to families, e.g. good parenting, healthy living, relationships, finance and debt etc.	◆ Again early intervention is vital to contribute to all 5 priorities identified
5. Reduce the numbers of young people aged 16 – 19 not in education, employment or training (NEET)	◆ To raise awareness of and promote apprenticeships / employment opportunities
Health and Wellbeing	
We will...	Rationale
1. Create environments which promote healthy lifestyles – physical activity, smoke free environment, alcohol	◆ To focus on prevention so that less people need health treatment and live healthier lives. Can contribute to the economy etc
2. Coordinate, communication and engagement to make best use of resources and information	◆ Make use of existing information and communication channels to see the full picture and reduce duplication
Culture	
We will...	Rationale
1. Encourage sustainable use of Derbyshire's landscapes, biodiversity, network of paths etc for learning and leisure.	◆ Making the most of Derbyshire's natural resources to promote healthy living, learning etc
2. Encourage more organisations to recognise the value of sport and physical/mental activity to improve quality of life.	◆ Employers can play a big role in encouraging employees to maintain healthy lifestyles through sport, and partners can be involved in this.
3. Support and engage a vibrant, diverse and independent Voluntary and Community Sector to widen participation	◆ Opportunity to work in partnership ◆ Opportunity to respond more effectively to community needs

and respond effectively to community needs.	<ul style="list-style-type: none"> ◆ Partners can work together with communities to strengthen society ◆ Reflect the contribution made by the VCS across all themes, not just Culture
4. Engage local people in the responsibilities, opportunities and benefits of taking part in cultural, arts and sports activities.	<ul style="list-style-type: none"> ◆ Opportunity to widen participation and engage individuals, communities, partners in delivery. ◆ Opportunity to work with under – represented groups target the delivery of services more effectively.
5. Strengthen work in partnership to conserve and enhance Derbyshire’s landscape, character and built heritage.	<ul style="list-style-type: none"> ◆ Conservation of existing assets is essential ◆ Closer work in partnership will bring additional benefits
Sustainable Communities	
We will...	Rationale
1. Provide affordable decent housing	<ul style="list-style-type: none"> ◆ Promote initiatives and support people to keep warm at home more efficiently
2. Improve local accessibility and sustainable travel choices – well connected communities	<ul style="list-style-type: none"> ◆ This would cover the priority on roads and extend to broadband
3. Support businesses to help them grow	
4. Raise aspirations, confidence and skills of local people	<ul style="list-style-type: none"> ◆ It was agreed that the two priorities above based on demand and supply - were seen as the key priorities
5. Provide advice and support to enable local organisations, schools, communities and individuals to reduce the impact and be resilient and adaptable to climate change	<ul style="list-style-type: none"> ◆ Combination of existing priorities in the Community Strategy
6. Work with communities and organisations to protect the natural and built environment and where appropriate create	<ul style="list-style-type: none"> ◆ Combination of existing priorities in the Community Strategy

opportunities for biodiversity	
7. Manage waste in a more sustainable way	<ul style="list-style-type: none"> ◆ This would cover three other priorities from SCS: <ul style="list-style-type: none"> ○ Reduce fly tipping and litter ○ Recognise Derbyshire's role as a provider of minerals ○ Ensure the good quality design, cleanliness and wildlife value of streets, parks and open spaces
8. Support people to increase their financial capability	

Section 2

Key “we wills”

Each table was asked to identify the top two priorities from the five priorities identified in the earlier discussion (six from Sustainable Communities). The 14 priorities identified during discussions are as follows:

- Strengthen pathways to effective **drug and alcohol services**
- Sustain effective prevention and diversionary programmes to tackle **ASB**
- Create environment which **promote healthy lifestyles** – physical activity, smoke free environment, alcohol
- Coordinate, communication and engagement to **make best use of resources and information**
- Provide **affordable decent housing**
- Improve **local accessibility** and **sustainable travel choices** – well connected communities
- **Support businesses** to help them grow
- Raise **aspirations, confidence and skills of local people**
- **Provide advice and support** to enable local organisations, schools, communities and individuals **to reduce the impact, and be resilient and adaptable to climate change**
- Work with communities and organisations to **protect the natural and built environment**
- Support and engage a **vibrant, diverse and independent VCS**
- Engage local people in the responsibilities, opportunities and benefits of **taking part in culture, arts and sports**
- **Target children and young families** in greatest need for **early intervention** in order to improve their ability to benefit from education and life chances
- **Protect children** from abuse, neglect and bullying

Section 3

Balance of remaining “we wills”

Participants were then given the opportunity to consider and vote for their priority issues across all other themes. Each participant was given three votes to allocate to the remaining priorities not chosen during the previous task, the results of which are set out above.

PRIORITY	VOTING	Rank
Safer		
Vulnerability – Identify, protect and support vulnerable people to prevent re-victimisation	7 (4 Safer, 2 Sustainable, 1 Culture)	9=
Progress Integrated Offender Management (IOM) approach to reduce re-offending	3 (2 Safer, 1 Culture)	13
Prioritise and enhance successful programmes which have seen crime fall significantly and improve the safety of local people	2 (1 Culture, 1 Health)	14
Health and Well Being		
Improve emotional and mental ill health and provide more mental health services in GP practices	7 (2 Health, 2 Culture, 2 Children’s, 1 Safer)	9=
Provide support to informal carers	10 (6 Health, 3 Sustainable, 1 Culture)	5=
Promote the safeguarding of vulnerable adults in Derbyshire	10 (4 Safer, 3 Health, 2 Children’s, 1 Sustainable)	5=
Children and Young People		
Increase the level of participation in a range of positive activities	5 (3 Safer, 1 Children’s, 1	12

	Culture)	
Provide advice and support to families	6 (3 Safer, 1 Children's, 1 Culture, 1 Sustainable)	11
Reduce the numbers of young people (16-19) not in education, employment and training	17 (6, Health, 5 Sustainable, 4 Children's, 2 Culture)	1
Sustainable Communities		
Manage waste in a more sustainable way	9 (5 Sustainable, 2 Safer, 2 Children's)	8
Support people to increase their financial capability	16 (5 Health, 5 Sustainable, 3 Children's, 2 Culture, 1 Safer)	2
Culture		
Encourage the sustainable use of Derbyshire landscapes, biodiversity, network of paths etc for learning and sport	10 (5 Sustainable, 3 Culture, 1 Children's, 1 Safer)	5=
Encourage more organisations to recognise the value of sport and physical and mental activity to improve quality of life	14 (6 Culture, 4 Health, 2 Sustainable, 1 Children's, 1 Safer)	3
Strengthen work in partnership to conserve Derbyshire landscape, character and built heritage	11 (7 Sustainable, 4 Culture)	4

DERBYSHIRE PARTNERSHIP FORUM

20 May 2011

Report of the County Council Chief Executive

THE ENGLISH INDICES OF DEPRIVATION 2010

Purpose of the Report

To set out the key findings from the English Indices of Deprivation 2010 published by the Department for Communities and Local Government and to highlight the latest position for Derbyshire.

Background

The English Indices of Deprivation 2010 (ID 2010) are the Government's official measure of multiple deprivation at small area level and provide a consistent measure of deprivation across England. Each area is given a deprivation score and a deprivation rank, providing an indication of relative deprivation. The 2010 Indices build on previous deprivation publications and allow comparison to be made with the Indices of Deprivation 2004 (ID 2004) and Indices of Deprivation 2007 (ID 2007).

The Indices of Deprivation 2010 are published for the same geographical levels that were used for the 2007 and 2004 Indices. The main geography used is Lower layer Super Output Area (LSOA). There are 32,482 such areas across England including 486 in Derbyshire. Each LSOA contains on average 1,500 people.

The Indices of Deprivation consist of two sets of deprivation measures: the Indices of Multiple Deprivation (IMD 2010) published at LSOA level and five summary measures published at local authority level.

The IMD 2010 combines a number of indicators from seven topic areas (domains) to arrive at an overall deprivation score and rank for each LSOA in England (the LSOA with a rank of 1 is the most deprived and 32,482 the least deprived). The seven domains are:

- Income;
- Employment;
- Health and Disability;
- Education, Skills and Training;
- Barriers to Housing and Services;
- Crime; and
- Living Environment.

Scores and rankings at LSOA level are also available for each of the individual topic areas listed above, along with two supplementary indices:

- Income Deprivation Affecting Children; and
- Income Deprivation Affecting Older People.

Key Findings

Data from the IMD 2010 and the local authority summary measures have been analysed. There have been a number of changes since ID 2007 and the key findings are set out in the Appendices.

Appendix A of the report has information for the overall IMD 2010. It includes a map showing the position of Derbyshire's LSOAs when the overall IMD scores for all LSOAs in England are ranked. The Appendix also lists the Derbyshire LSOAs that fall into the most deprived 20% of LSOAs in England.

Appendix B sets out key initial findings from the English Indices of Deprivation 2010 based on analysis at LSOA and local authority level.

Appendix C maps the change between IMD 2007 and IMD 2010 for the overall Index of Multiple Deprivation and shows that the north east of the county is improving in relative terms but that areas of Erewash and High Peak are worsening.

Appendix D outlines how the position of Derbyshire LSOAs ranked in the 20% most deprived in England for the overall IMD 2010 has changed since 2007.

Next Steps

A report containing more detailed analysis of the Indices of Deprivation 2010 will be available on the Derbyshire Observatory website in due course. The report will provide analysis on the individual domains in detail to further develop understanding of Derbyshire. In addition the report will also examine deprivation at district and county level and the change in deprivation ranks between 2004, 2007 and 2010.

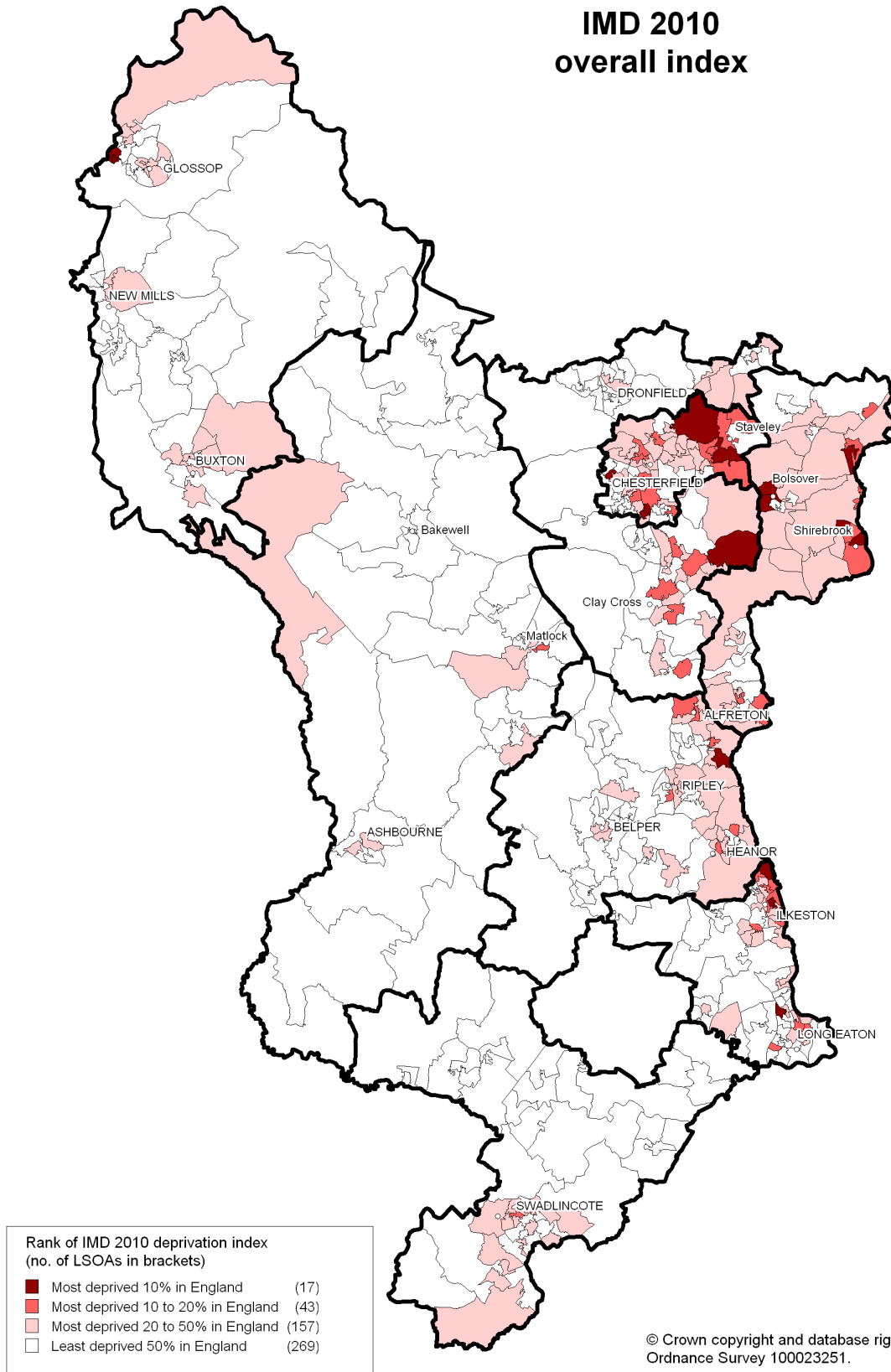
Recommendation

It is recommended that the Forum:

1. Note the latest position for Derbyshire on the English Indices of Deprivation 2010.

**Nick Hodgson
Chief Executive
Derbyshire County Council**

IMD 2010
overall index



IMD 2010: overall index

LSOA	Ward containing LSOA	District	England rank (1 is most deprived)	England decile	County rank
E01019663	Ilkeston North	Erewash	785	1	1
E01019578	Rother	Chesterfield	1041	1	2
E01019507	Shirebrook East	Bolsover	1837	1	3
E01019729	Gamesley	High Peak	1842	1	4
E01019728	Gamesley	High Peak	1884	1	5
E01019444	Ironville & Riddings	Amber Valley	1967	1	6
E01019509	Shirebrook North West	Bolsover	2224	1	7
E01019561	Loundsley Green	Chesterfield	2272	1	8
E01019488	Bolsover West	Bolsover	2313	1	9
E01019498	Elmton-with-Creswell	Bolsover	2458	1	10
E01019575	Rother	Chesterfield	2486	1	11
E01019566	Middlecroft & Poolsbrook	Chesterfield	2749	1	12
E01019662	Ilkeston Central	Erewash	2936	1	13
E01019483	Bolsover North West	Bolsover	2945	1	14
E01019799	Holmewood & Heath	NE Derbyshire	3010	1	15
E01019650	Derby Rd West	Erewash	3219	1	16
E01019527	Barrow Hill & New Whittington	Chesterfield	3246	1	17
E01019664	Ilkeston North	Erewash	3386	2	18
E01019572	Old Whittington	Chesterfield	3411	2	19
E01019505	Scarcliffe	Bolsover	3419	2	20
E01019510	Shirebrook North West	Bolsover	3437	2	21
E01019568	Middlecroft & Poolsbrook	Chesterfield	3452	2	22
E01019523	Whitwell	Bolsover	3591	2	23
E01019625	Matlock St Giles	Derbyshire Dales	3600	2	24
E01019581	St Helens	Chesterfield	3767	2	25
E01019452	Langley Mill & Aldercar	Amber Valley	3822	2	26
E01019808	North Wingfield Central	NE Derbyshire	3929	2	27
E01019761	Stone Bench	High Peak	4013	2	28
E01019668	Kirk Hallam	Erewash	4107	2	29
E01019682	Nottingham Rd	Erewash	4122	2	30
E01019469	Somercotes	Amber Valley	4191	2	31
E01019796	Grassmoor	NE Derbyshire	4208	2	32

LSOA	Ward containing LSOA	District	England rank (1 is most deprived)	England decile	County rank
E01019463	Ripley & Marehay	Amber Valley	4371	2	33
E01019549	Hollingwood & Inkersall	Chesterfield	4839	2	34
E01019775	Clay Cross North	NE Derbyshire	4883	2	35
E01019699	Sawley	Erewash	4942	2	36
E01019547	Hasland	Chesterfield	5001	2	37
E01019511	Shirebrook South East	Bolsover	5027	2	38
E01019556	Holmebrook	Chesterfield	5160	2	39
E01019497	Elmton-with-Creswell	Bolsover	5276	2	40
E01019646	Cotmanhay	Erewash	5456	2	41
E01019584	St Leonards	Chesterfield	5583	2	42
E01019403	Alfreton	Amber Valley	5652	2	43
E01019863	Newhall & Stanton	South Derbyshire	5710	2	44
E01019571	Moor	Chesterfield	5795	2	45
E01019565	Lowgates & Woodthorpe	Chesterfield	5859	2	46
E01019542	Dunston	Chesterfield	5918	2	47
E01019500	Pinxton	Bolsover	5972	2	48
E01019441	Heanor West	Amber Valley	6122	2	49
E01019563	Lowgates & Woodthorpe	Chesterfield	6125	2	50
E01019567	Middlecroft & Poolsbrook	Chesterfield	6128	2	51
E01019688	Old Park	Erewash	6172	2	52
E01019644	Cotmanhay	Erewash	6221	2	53
E01019515	South Normanton East	Bolsover	6238	2	54
E01019647	Derby Rd East	Erewash	6244	2	55
E01019661	Ilkeston Central	Erewash	6281	2	56
E01019508	Shirebrook Langwith	Bolsover	6309	2	57
E01019777	Clay Cross South	NE Derbyshire	6327	2	58
E01019401	Alfreton	Amber Valley	6448	2	59
E01019817	Shirland	NE Derbyshire	6494	2	60

The English Indices of Deprivation 2010 – Key Findings

Findings at LSOA Level for the Index of Multiple Deprivation 2010 (the Overall Index)

- The most deprived LSOA within Derbyshire, Hopewell North, lies within Ilkeston North Ward and covers part of the Cotmanhay area. It ranks in the top 3% most deprived areas in England. It was also the most deprived LSOA in ID 2007.
- There are 17 LSOAs within the 10% most deprived areas in England, 1 more than in ID 2007.
- There are 60 LSOAs within Derbyshire in the 20% most deprived in England, one less than in ID 2007 and 7 less than in ID 2004.
- The number of LSOAs in the least deprived 10% in England has increased from 30 in ID 2007 to 42 in 2010. This maintains the upward trend from 2004 when 23 LSOAs were in the least deprived 10%.
- Across all the LSOAs in the county there has been an improvement over time. The average rank of Derbyshire's LSOAs on the national scale has fallen by 1% compared with ID 2007, and 3% compared with ID 2004.
- Populations in urban areas in Derbyshire are more likely to live in deprived areas than those living elsewhere. When comparing ID 2007 and ID 2010, it is seen that the average rank for both urban and rural populations has improved.

Findings for the Local Authority Summary Measures

- Out of all 326 local authority districts in the country, Bolsover and Chesterfield are ranked the highest (most deprived) of Derbyshire's districts in each of the five local authority summary measures. On the 'rank of average rank' summary measure Bolsover ranks as 46th most deprived local authority district and Chesterfield 90th.
- When comparing ID 2007 and ID 2010, six of the eight districts in the county have shown improvement in their rankings across the five measures that are used to comment on deprivation within an authority. Chesterfield shows the greatest improvement, followed by North East Derbyshire, Bolsover, South Derbyshire, Amber Valley and Derbyshire Dales. However, a net worsening across the five measures is shown by High Peak and Erewash, but particularly by the latter.
- Amongst the 152 county/unitary authorities in England, Derbyshire ranks lie between 78th and 102nd on the five local authority summary measures. Derbyshire's position has improved between ID 2007 and ID 2010 relative to other areas in England in four of the five summary measures, and Derbyshire is the only county in the region to show net improvement across all five measures.

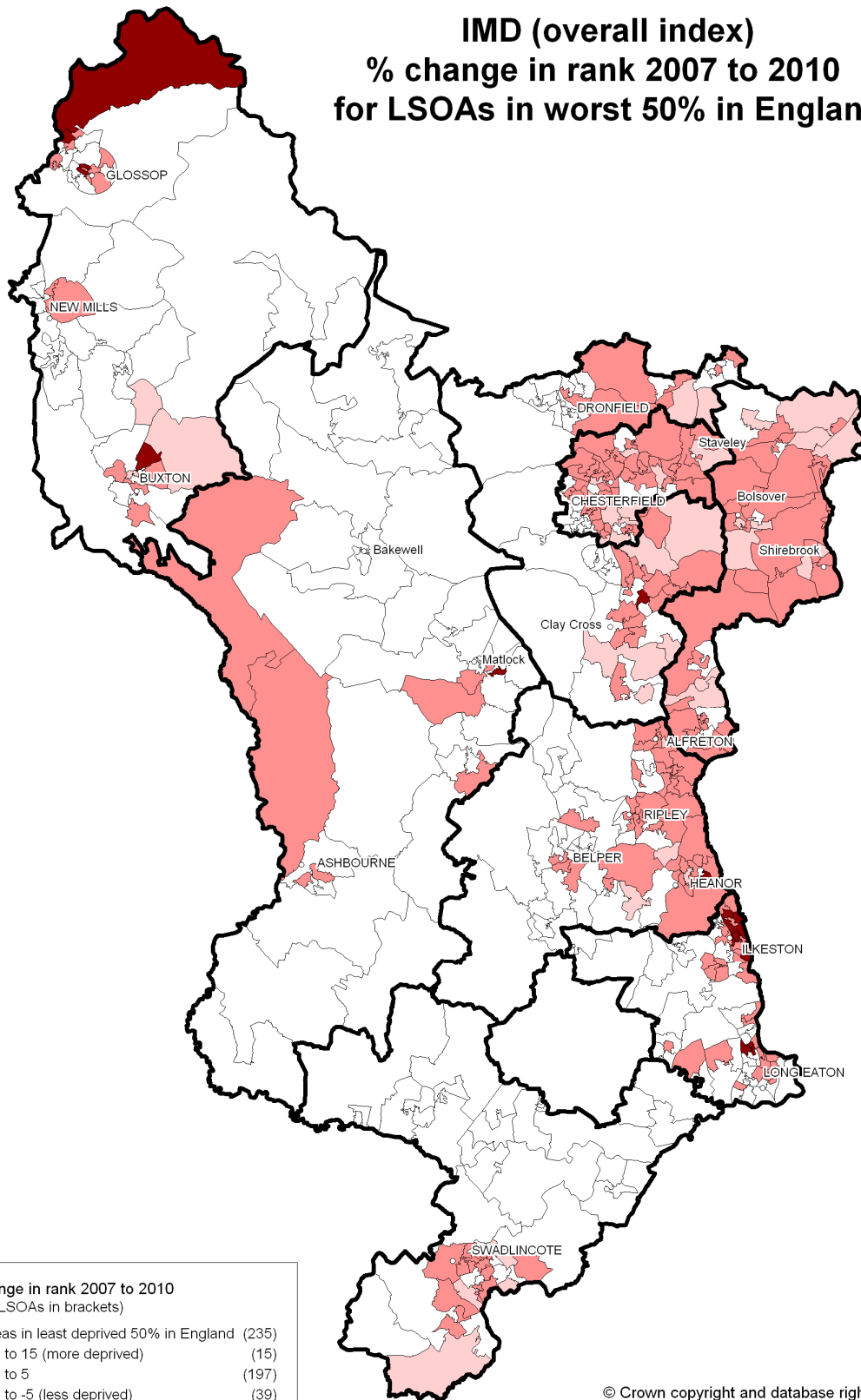
Findings for the Seven Domains and Two Supplementary Indices

- Across the seven domains of deprivation, Derbyshire scores worst on the Education, Skills and Training domain, with the most LSOAs in the worst 10% in England, at 56. A comparison between ID 2007 and ID 2010 shows that there has been an increase in the number of LSOAs near the top of the ranking for this domain, with 9 more in the top 10% deprived in England.
- Derbyshire's second worst domain is Employment, with 40 LSOAs in the most deprived 10% nationally. There has been a slight improvement compared with ID 2007 when there were 45 LSOAs in the 10% most deprived in England.
- The two worst performing domains in ID 2010 are the same as for ID 2007.
- There are nearly 93,000 people in the county who are classed as income deprived including nearly 23,000 children and 30,600 people aged 60 or over.
- Employment deprivation is classed as those people receiving Jobseekers Allowance, Incapacity Benefit or Severe Disablement Allowance or those participating in the New Deal. Over 44,000 people of working age in Derbyshire fell into this category in ID 2010.
- The pattern of results for the Barriers to Housing domain is vastly different from that of the other domains; of the 16 highest LSOAs 11 are in Derbyshire

Dales. This is likely to reflect house prices and long distances to travel to key services in rural parts of the county. However, there are 108 LSOAs in the lowest 10% in England, more than in any other domain.

- In ID 2010 on the Crime domain, there were 13 LSOAs within the 10% most deprived areas in England, including the town centres of Long Eaton, Chesterfield, Ilkeston, Bolsover, Shirebrook and Alfreton. Analysis of the average rank of all LSOAs in the county shows that there has been a significant worsening compared with ID 2007 for this domain. This is set against the improvement that was shown between ID 2004 and ID 2007.
- On the Living Environment domain, there are 8 LSOAs in the county in the 10% most deprived areas in England, the second least of any of the domains. At the other end of the ranks, there are 34 LSOAs in the least deprived 10% in England for this domain. None of these are in Derbyshire Dales which may reflect the number of properties without central heating in the district.

**IMD (overall index)
% change in rank 2007 to 2010
for LSOAs in worst 50% in England**



© Crown copyright and database rights 2011.
Ordnance Survey 100023251.

IMD 2010 (Overall Index) - Derbyshire LSOAs in the 20% Most Deprived in England – Change Compared with ID 2007

LSOA	Ward containing	Local authority	IMD score 2010	England rank of IMD (1 is most deprived)	County rank (1 is most deprived)	Up/down movement and by how many places 2007 - 2010
E01019663	Ilkeston North	Erewash District	60.49	785	1	↔
E01019578	Rother	Chesterfield District	58.00	1041	2	↔
E01019507	Shirebrook East	Bolsover District	52.11	1837	3	↑ 1
E01019729	Gamesley	High Peak District	52.06	1842	4	↑ 11
E01019728	Gamesley	High Peak District	51.71	1884	5	↑ 4
E01019444	Ironville and Riddings	Amber Valley District	51.22	1967	6	↑ 1
E01019509	Shirebrook North West	Bolsover District	49.74	2224	7	↓ 4
E01019561	Loundsley Green	Chesterfield District	49.52	2272	8	↑ 6
E01019488	Bolsover West	Bolsover District	49.36	2313	9	↓ 1
E01019498	Elmton-with-Creswell	Bolsover District	48.60	2458	10	↑ 1
E01019575	Rother	Chesterfield District	48.46	2486	11	↓ 6
E01019566	Middlecroft and Poolsbrook	Chesterfield District	47.13	2749	12	↓ 6
E01019662	Ilkeston Central	Erewash District	46.23	2936	13	↑ 33
E01019483	Bolsover North West	Bolsover District	46.20	2945	14	↑ 2
E01019799	Holmewood and Heath	North East Derbyshire District	45.96	3010	15	↑ 5
E01019650	Derby Road West	Erewash District	45.03	3219	16	↑ 27
E01019527	Barrow Hill & New Whittington	Chesterfield District	44.89	3246	17	↓ 7
E01019664	Ilkeston North	Erewash District	44.29	3386	18	↑ 18
E01019572	Old Whittington	Chesterfield District	44.15	3411	19	↓ 1
E01019505	Scarcliffe	Bolsover District	44.10	3419	20	↓ 1
E01019510	Shirebrook North West	Bolsover District	43.99	3437	21	↓ 9
E01019568	Middlecroft & Poolsbrook	Chesterfield District	43.94	3452	22	↓ 9
E01019523	Whitwell	Bolsover District	43.44	3591	23	↑ 5
E01019625	Matlock St Giles	Derbyshire Dales District	43.42	3600	24	↑ 29

LSOA	Ward containing	Local authority	IMD score 2010	England rank of IMD (1 is most deprived)	County rank (1 is most deprived)	Up/down movement and by how many places 2007 - 2010
E01019581	St Helens	Chesterfield District	42.77	3767	25	↑ 1
E01019452	Langley Mill & Aldercar	Amber Valley District	42.54	3822	26	↑ 6
E01019808	North Wingfield Central	North East Derbyshire District	42.16	3929	27	↓ 6
E01019761	Stone Bench	High Peak District	41.87	4013	28	↓ 6
E01019668	Kirk Hallam	Erewash District	41.53	4107	29	↑ 19
E01019682	Nottingham Rd	Erewash District	41.48	4122	30	↑ 8
E01019469	Somercotes	Amber Valley District	41.25	4191	31	↑ 2
E01019796	Grassmoor	North East Derbyshire District	41.20	4208	32	↓ 7
E01019463	Ripley & Marehay	Amber Valley District	40.67	4371	33	↓ 9
E01019549	Hollingwood & Inkersall	Chesterfield District	39.10	4839	34	↑ 5
E01019775	Clay Cross North	North East Derbyshire District	38.96	4883	35	↑ 17
E01019699	Sawley	Erewash District	38.76	4942	36	↑ 27
E01019547	Hasland	Chesterfield District	38.58	5001	37	↑ 20
E01019511	Shirebrook South East	Bolsover District	38.48	5027	38	↓ 11
E01019556	Holmebrook	Chesterfield District	38.07	5160	39	↑ 1
E01019497	Elmton-with-Creswell	Bolsover District	37.73	5276	40	↓ 9
E01019646	Cotmanhay	Erewash District	37.17	5456	41	↑ 37
E01019584	St Leonards	Chesterfield District	36.79	5583	42	↓ 25
E01019403	Alfreton	Amber Valley District	36.60	5652	43	↑ 12
E01019863	Newhall & Stanton	South Derbyshire District	36.45	5710	44	↑ 7
E01019571	Moor	Chesterfield District	36.21	5795	45	↓ 4
E01019565	Lowgates & Woodthorpe	Chesterfield District	36.02	5859	46	↓ 12
E01019542	Dunston	Chesterfield District	35.84	5918	47	↓ 18
E01019500	Pinxton	Bolsover District	35.71	5972	48	↑ 6
E01019441	Heanor West	Amber Valley District	35.26	6122	49	↑ 22
E01019563	Lowgates & Woodthorpe	Chesterfield District	35.26	6125	50	↓ 15
E01019567	Middlecroft & Poolsbrook	Chesterfield District	35.25	6128	51	↓ 14
E01019688	Old Park	Erewash District	35.13	6172	52	↑ 28

LSOA	Ward containing	Local authority	IMD score 2010	England rank of IMD (1 is most deprived)	County rank (1 is most deprived)	Up/down movement and by how many places 2007 - 2010
E01019644	Cotmanhay	Erewash District	34.99	6221	53	↑ 20
E01019515	South Normanton East	Bolsover District	34.93	6238	54	↓ 10
E01019647	Derby Road East	Erewash District	34.92	6244	55	↑ 11
E01019661	Ilkeston Central	Erewash District	34.83	6281	56	↑ 26
E01019508	Shirebrook Langwith	Bolsover District	34.75	6309	57	↓ 27
E01019777	Clay Cross South	North East Derbyshire District	34.70	6327	58	↑ 1
E01019401	Alfreton	Amber Valley District	34.31	6448	59	↓ 1
E01019817	Shirland	North East Derbyshire District	34.18	6494	60	↓ 37

- ↔ Hasn't moved in the county rankings between 2007 and 2010
- ↑ Has moved up in the county rankings (more deprived since 2007)
- ↓ Has moved down in the county rankings (less deprived since 2007)